

01634 379 799

www.harrisonsreeve.com

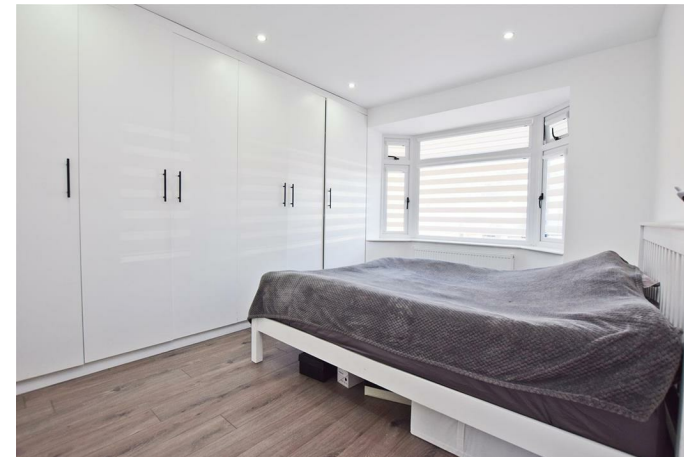
 HARRISONS
REEVE



172 Wigmore Road

• Rainham, Wigmore

Price: Offers Over £550,000



172, Wigmore Road, , ME8 0TJ
Offers Over £550,000

- ASKING PRICE: £600,000
- THREE BEDROOM DETACHED BUNGALOW
- DRIVEWAY
- GARAGE
- WET ROOM
- LANDSCAPED REAR GARDEN
- APPROX 150FT REAR GARDEN
- CLOSE TO M2 MOTORWAY
- CTAX BAND: E
- EPC RATING: D

Simply stunning 3 bedroom extended detached bungalow located on the popular & sought after Wigmore Road. The property has been renovated to a high standard throughout and benefits from a large driveway, garage, approximately 150ft rear garden and a large open plan lounge/kitchen/diner.

EPC Rating: D

Entrance Hall
6'1" x 19'5" (1.86m x 5.92m)

Master Bedroom
10'11" x 10'11" (3.33m x 3.34m)

2nd Bedroom
10'11" x 11'3" (3.33m x 3.45m)

3rd Bedroom
10'10" x 6'11" (3.31m x 2.11m)

Wet Room
7'6" x 6'3" (2.29m x 1.91m)

Lounge/Kitchen/Diner
24'10" x 20'0" (7.58m x 6.12m)

Garden
Approx 150ft

Garage
Single Garage/Workshop

**** AGENT NOTE, PLEASE NOTE THAT THE VENDOR IS RELATED TO A MEMBER OF STAFF AT HARRISONS REEVE ****

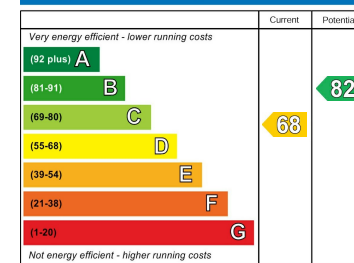


It should also be noted that the vendor is related to a member of staff at Harrison's Reeve



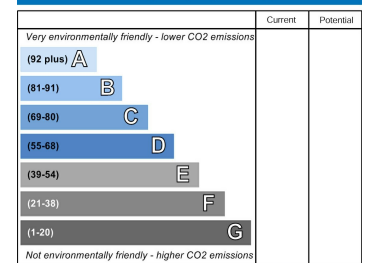


Energy Efficiency Rating



England & Wales EU Directive 2002/91/EC

Environmental Impact (CO₂) Rating



England & Wales EU Directive 2002/91/EC

Harrisons Reeve Harrisons Reeve Office
 35 High Street, Rainham, Gillingham, Kent, ME8 7HS
 medway@harrisonsreeve.com (01634) 379799

GROUND FLOOR
1044 sq.ft. (97.0 sq.m.) approx.



TOTAL FLOOR AREA : 1044 sq.ft. (97.0 sq.m.) approx.

Whilst every attempt has been made to ensure the accuracy of the floorplan contained here, measurements of doors, windows, rooms and any other items are approximate and no responsibility is taken for any error, omission or mis-statement. This plan is for illustrative purposes only and should be used as such by any prospective purchaser. The services, systems and appliances shown have not been tested and no guarantee as to their operability or efficiency can be given.
Made with Metropix ©2024