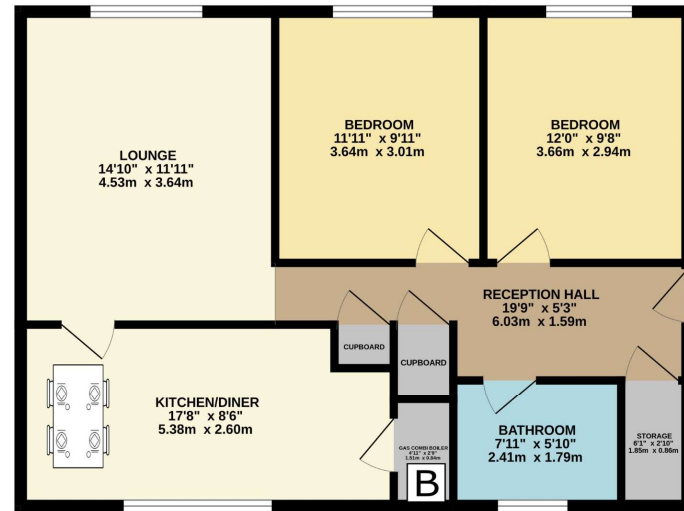
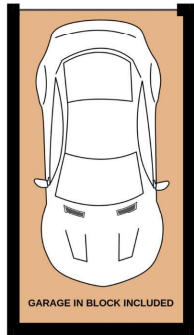


GARAGE IN BLOCK

GROUND FLOOR



LYNDHURST ROAD

Whilst every attempt has been made to ensure the accuracy of the floorplan contained here, measurements of doors, windows, rooms and any other items are approximate and no responsibility is taken for any error, omission or mis-statement. This plan is for illustrative purposes only and should be used as such by any prospective purchaser. The services, systems and appliances shown have not been tested and no guarantee as to their operability or efficiency can be given.  
Made with Metropix ©2025

## THINKING OF SELLING OR TRYING TO SELL?

- Family Firm Established since 1980
- Extensive Buyer Register
- All Homes Visibly Marketed from Team Agencies in Essex & LONDON
- Accompanied Viewings
- Excellent photography & Floorplans
- Highly Experienced Agency, 1000's successfully SOLD



**rightmove**  
find your happy



**Zoopla.co.uk**  
Smarter property search



**PrimeLocation**  
Find the home you deserve

**Find us on Facebook**



**JOHNCOTTIS**  
ESTATE AGENTS  
SELL YOUR HOME WITH US >

SMALL ENOUGH TO CARE  
BUT BIG ENOUGH TO SUCCEED  
IN SELLING YOUR HOME

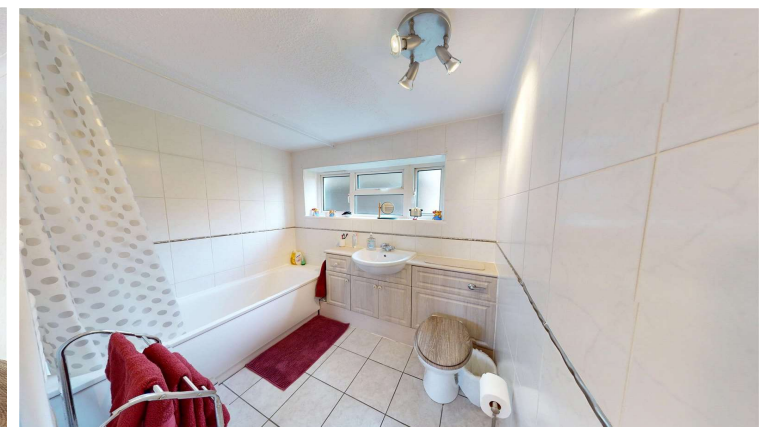
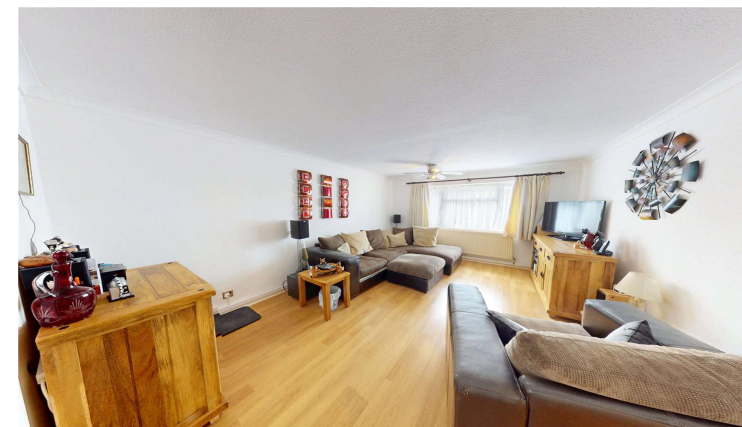
# JOHNCOTTIS

ESTATE AGENTS



**Lyndhurst Road, Corringham, Essex, SS17 7SW | Guide Price £215,000 to £225,000**

- 2 super sized double bedroom g/f flat
- Garage included
- Lots of storage space
- Separate large kitchen/dining
- Gas heating and double glazing
- Very impressive, beyond expectations



**19 Kings Parade, King Street, Stanford-le-Hope, Essex, SS17 0HP**  
**01375 676655**    **sales@johncottis.co.uk**  
**www.johncottis.co.uk**

Registered Proprietors Temp-Green LTD., Trading as John Cottis & Co. Registered in England No. 1534107  
Registered Office: 21 Lodg Lane, Grays, Essex, RM17 5RY

The Consumer Protection from Unfair Trading Regulations 2008 (CPRs). These details are for guidance only and complete accuracy cannot be guaranteed. If there is any point, which is of particular importance, verification should be obtained. They do not constitute a contract or part of a contract. All measurements are approximate. No guarantee can be given with regard to planning permissions or fitness for purpose. No apparatus, equipment, fixture or fitting has been tested. Items shown in photographs are NOT necessarily included. Interested Parties are advised to check availability and make an appointment to view before travelling to see a property.



Guide Price: £215,000 to £225,000. A super sized 2 double bedroom ground floor flat packed with standout features including large kitchen/diner, large lounge, gas heating, garage, lots of storage and great position for public transport, shops, schools and leisure. Very impressive!

Reception Hallway: 19'9" x 5'3" (6.02m x 1.6m)  
Radiator. Laminate wood flooring. Coved cornice to ceiling. Access to three storage spaces.

Lounge: 14'10" x 11'11" (4.52m x 3.63m)  
Upvc double glazed window. Radiator. Laminate wood flooring. Coved cornice to ceiling. Spacious lounge design. Access to kitchen/diner.

Kitchen/Dining: 17'8" x 8'6" (5.38m x 2.6m)  
Upvc double glazed window. Radiator. Tiled theme flooring. Feature sized kitchen/diner with fitted range of base and eye level units with work surfaces. Access to cupboard housing gas boiler.

Bedroom 1: 11'11" x 9'11" (3.63m x 3.02m)  
Large bedroom with Upvc double glazed window, radiator and fitted carpet.

Bedroom 2: 12' x 9'8" (3.66m x 2.95m)  
Large bedroom with Upvc double glazed window, radiator and fitted carpet.

Bathroom: 7'11" x 5'10" (2.41m x 1.78m)  
Upvc double glazed window. Radiator. Tiled floor and walls. Bath suite with shower over bath, concealed cistern wc and wash hand basin with fitted cupboard unit.

Storage Room/Cupboard: 6'1" x 2'10" (1.85m x 0.86m)  
Surprising storage space.

Garage Included:  
Garage, located in block included in sale.

