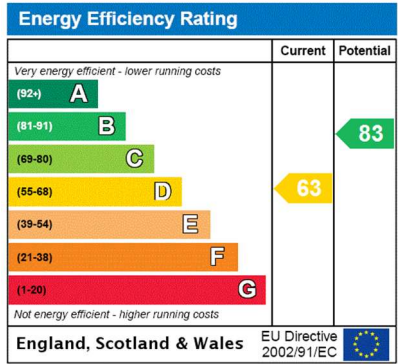


THINKING OF SELLING OR TRYING TO SELL?

- Family Firm Established since 1980
- Extensive Buyer Register
- All Homes Visibly Marketed from Team Agencies in Essex & LONDON
- Accompanied Viewings
- Excellent photography & Floorplans
- Highly Experienced Agency, 1000's successfully SOLD



JOHNCOTTIS ESTATE AGENTS

SELL YOUR HOME WITH US >

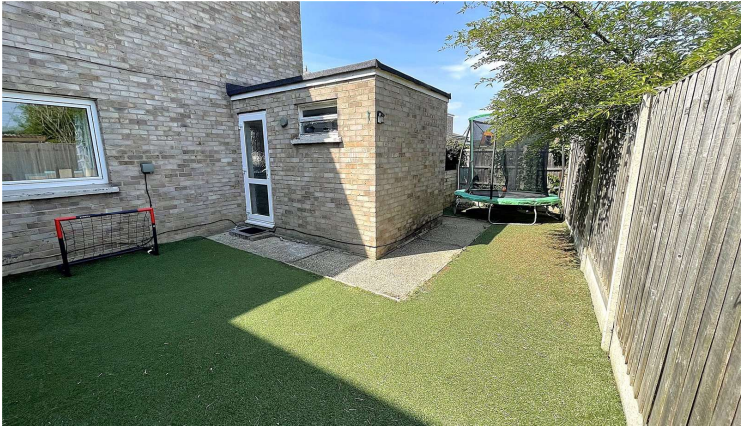
SMALL ENOUGH TO CARE BUT BIG ENOUGH TO SUCCEED IN SELLING YOUR HOME

The Consumer Protection from Unfair Trading Regulations 2008 (CPRs). These details are for guidance only and complete accuracy cannot be guaranteed. If there is any point, which is of particular importance, verification should be obtained. They do not constitute a contract or part of a contract. All measurements are approximate. No guarantee can be given with regard to planning permissions or fitness for purpose. No apparatus, equipment, fixture or fitting has been tested. Items shown in photographs are NOT necessarily included. Interested Parties are advised to check availability and make an appointment to view before travelling to see a property.



Crawley Close, Corringham, Essex, SS17 7JU | Guide Price: £320,000 to £340,000

- Utility room
- Close to Giffards & Gable Hall Schools
- Ground floor WC
- Three good size bedrooms
- Gas radiator heating
- Kitchen/diner: 17'7" x 9'6"



JOHNCOTTIS ESTATE AGENTS

19 Kings Parade, King Street, Stanford-le-Hope, Essex, SS17 0HP

01375 676655 sales@johncottis.co.uk www.johncottis.co.uk

Registered Proprietors Temp-Green LTD., Trading as John Cottis & Co. Registered in England No. 1534107
Registered Office: 21 Lodge Lane, Grays, Essex, RM17 5RY

Guide Price: £320,000 to £340,000. Situated 0.7 mile from Corringham town centre is this home offering ground floor wc, utility room, kitchen/diner and three generous bedrooms. Externally 40' wide rear garden, summer house and shed.

Entrance Hall:
Radiator. Fitted carpet. Cupboard with combi boiler. Stairs leading to first floor.

Lounge: 11'8" < 9'11" x 11'6" (3.56m < 3.02m x 3.5m)
Double glazed French doors to garden. Radiator. Wood laminate flooring.

Kitchen/Diner: 17'7" x 9'6" (5.36m x 2.9m)
Double glazed window to front. Double glazed window to side. Radiator. Ceramic tiled flooring. Base and eye level units with inset stainless steel sink drainer unit with mixer tap. Space and plumbing for dishwasher. Door to:

Lobby:
Door to rear garden. Ceramic tiled flooring. Doors to wc and utility room.

WC: 4' x 4'1" (1.22m x 1.24m)
Double glazed window. Ceramic tiled flooring.

Utility Room: 7'6" x 6' (2.29m x 1.83m)
Window to rear. Radiator. Ceramic tiled flooring.

Landing:
Fitted carpet. Airing linen cupboard. Doors to:

Bedroom 1: 13'10" x 8'11" (4.22m x 2.72m)
Double glazed window to rear. Radiator. Strip wood flooring.

Bedroom 2: 10' x 9'6" (3.05m x 2.9m)
Double glazed window to side. Radiator. Fitted carpet.

Bedroom 3: 9'6" x 8'6" (2.9m x 2.6m)
Double glazed window to rear. Radiator. Fitted carpet.

Bathroom: 6'3" x 6'1" (1.9m x 1.85m)
Double glazed window to front. Heated towel rail radiator. Ceramic tiled flooring. Three piece suite comprising: panelled bath with electric shower over, wc and wash hand basin.

Rear Garden: 40' wide (12.2m wide)
Rear and side garden of 40' wide. Fenced to boundaries. Timber built storage shed and;

Summer House: 8'6" x 6' (2.6m x 1.83m)
With power connected. Window to front and side.

Council Tax Band:
'C'

