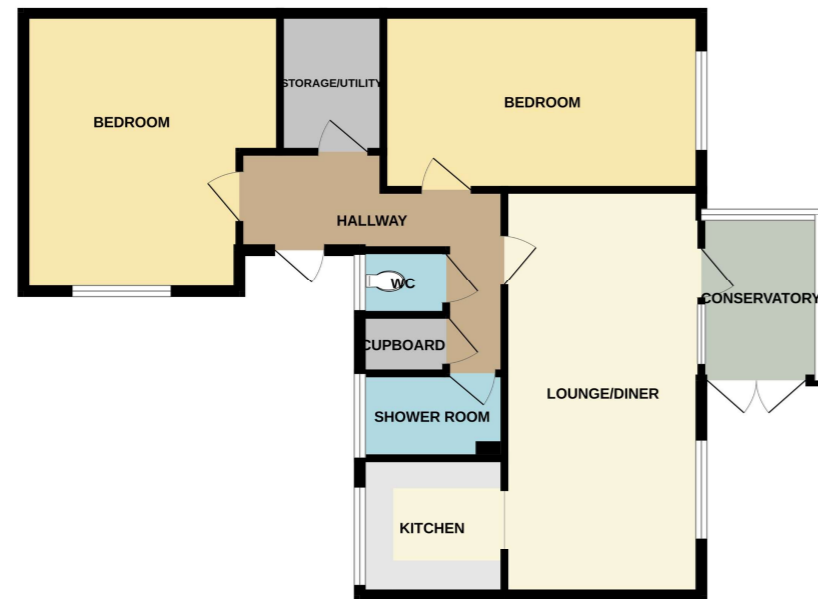


GROUND FLOOR



PENDINE CLOSE
Whilst every attempt has been made to ensure the accuracy of the floorplan contained here, measurements of floors, ceilings, rooms and any other items are approximate and no responsibility is taken for any error, omission or mis-statement. This plan is for illustrative purposes only and should be used as such by any prospective purchaser. The services, systems and appliances shown have not been tested and no guarantee is given as to their operability or efficiency can be given.
 Made with Metropix 02023

THINKING OF SELLING OR TRYING TO SELL?

- Family Firm Established since 1980
- Extensive Buyer Register
- All Homes Visibly Marketed from Team Agencies in Essex & LONDON
- Accompanied Viewings
- Excellent photography & Floorplans
- Highly Experienced Agency, 1000's successfully SOLD



JOHNCOTTIS ESTATE AGENTS
 SELL YOUR HOME WITH US >

SMALL ENOUGH TO CARE BUT BIG ENOUGH TO SUCCEED IN SELLING YOUR HOME

JOHNCOTTIS

ESTATE AGENTS



Pendine Close, Corringham, S17 7JS | Guide price £210,000 to £220,000

- Conservatory: 8'4" x 6'
- Own rear garden
- Storage/Office 7'1" x 5'
- Two double bedrooms
- G/Floor Maisonette
- Convenient location



JOHNCOTTIS

19 Kings Parade, King Street, Stanford-le-Hope, Essex, SS17 0HP
 01375 676655 sales@johncottis.co.uk
 www.johncottis.co.uk

Registered Proprietors Temp-Green LTD., Trading as John Cottis & Co. Registered in England No. 1534107
 Registered Office: 21 Lodge Lane, Grays, Essex, RM17 5RY

The Consumer Protection from Unfair Trading Regulations 2008 (CPRs). These details are for guidance only and complete accuracy cannot be guaranteed. If there is any point, which is of particular importance, verification should be obtained. They do not constitute a contract or part of a contract. All measurements are approximate. No guarantee can be given with regard to planning permissions or fitness for purpose. No apparatus, equipment, fixture or fitting has been tested. Items shown in photographs are NOT necessarily included. Interested Parties are advised to check availability and make an appointment to view before travelling to see a property.

Two double bedroom ground floor maisonette with conservatory, store room/office and own rear garden. 96 year lease term remaining. Convenient position within 0.8 mile of Corringham Town Centre.

Agents Note: We understand the remaining lease term to be 96' years at point of marketing. Ground rent is believed to be £200 pa and no service charge applies. Buyers Solicitors to verify.

Entrance Hall: Radiator. Wood effect flooring. Cupboard housing combi boiler.

Lounge: 20'6" x 9'10" (6.25m x 3m) Double glazed window to side. Plus two double glazed window and door to conservatory. Radiator. Fitted carpet. Access to kitchen.

Conservatory: 8'4" x 6' (2.54m x 1.83m) Double glazed windows to rear and side. and French doors leading to garden.

Kitchen: 7'3" x 6'9" (2.2m x 2.06m) Double glazed window to side. Vinyl flooring. Range of base and eye level units. Roll top work surfaces. Stainless steel single drainer sink unit with mixer taps. Plumbing for washing machine. Integrated electric dual oven and inset 4 ring electric hob.

Bedroom 1: 13'10" x 10'10" > 13' (4.22m x 3.3m > 3.96m) Double glazed window to front. Radiator. Fitted carpet. Mirror fronted sliding door wardrobes.

Bedroom 2: 16' x 9' (4.88m x 2.74m) Double glazed window to side. Radiator. Fitted carpet.

Store Room/Office: 7'1" x 5' (2.16m x 1.52m) Fitted carpet.

WC: Double glazed window to side. Low flush wc. Part tiled walls.

Shower Room: Double glazed window to side. Vinyl flooring. Wet room style shower room with electric shower. Tiled walls. Wash hand basin.

Garden: 39' (11.89) max x 28'6" (8.69) max (L Shaped) Fenced with own pedestrian gate.

