



3 Dacre Close, Greenford, UB6 9UQ

£295,000

EVANS
& COMPANY

Dacre Close Greenford

- 1 Bedroom First Floor Maisonette
- Double Gazed Windows
- Allocated Parking Space
- 955 Year Lease
- No Upper Chain

Evans & Company are pleased to present this spacious one bedroom first floor maisonette located on the popular Westridge Estate. The property is offered with no upper chain and boasts features that include double glazed windows, electric heating and allocated parking.

Front Door to

Stairs to First Floor
doors to

Lounge

17'2" x 12'2" (5.25 x 3.73)

Double glazed window to front, electric heater, power points, laminate floors, archway to

Kitchen

12'11" x 5'8" (3.95 x 1.73)

Eye and base level storage units, works surfaces, space for fridge / freezer, space and plumbing for washing machine.



Shower Room

Shower cubicle, was hand basin, low level wc

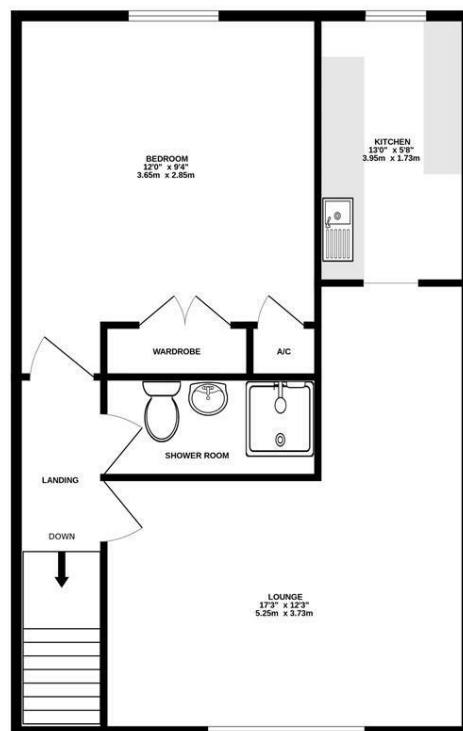
Bedroom

11'11" x 9'4" (3.65 x 2.85)

Built in wardrobe, cupboard housing hot water tank, double glazed window to rear, electric heater

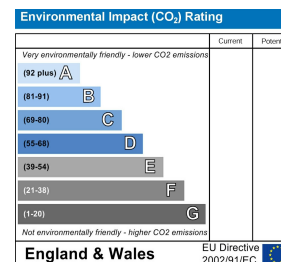
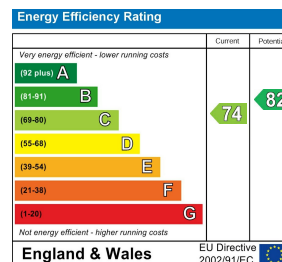


GROUND FLOOR
463 sq.ft. (43.0 sq.m.) approx.



TOTAL FLOOR AREA : 463 sq.ft. (43.0 sq.m.) approx.

Whilst every attempt has been made to ensure the accuracy of the floorplan contained here, measurements of doors, windows, rooms and any other items are approximate and no responsibility is taken for any error, omission or mis-statement. This plan is for illustrative purposes only and should be used as such by any prospective purchaser. The services, systems and appliances shown have not been tested and no guarantee as to their operability or efficiency can be given.
Made with Metropix i2025



55 The Broadway, Greenford, Middlesex, UB6 9PN
020 8575 7722
enquiries@evanson-line.com
www.altosoftware.co.uk