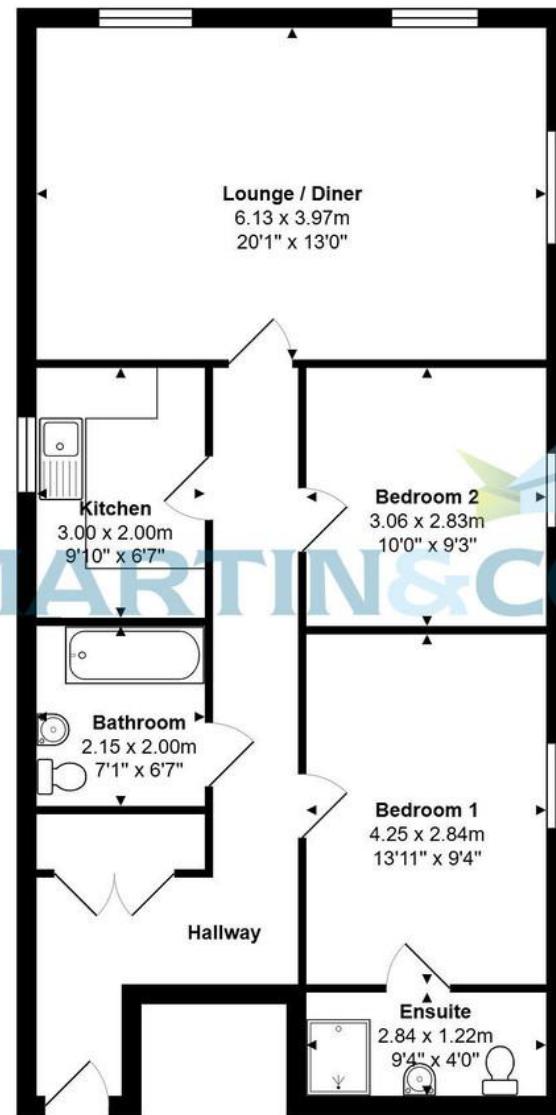


Property Location Ashley Cross



Total Area: 75.5 m² ... 812 ft²

All measurements are approximate and for display purposes only



Accuracy: References to the Tenure of a Property are based on information supplied by the Seller. The Agent has not had sight of the title documents. A Buyer is advised to obtain verification from their Solicitor. Items shown in photographs including but not limited to carpets, fixtures and fittings are not included unless specifically mentioned within the sales particulars. They may however be available by separate negotiation. Buyers must check the availability of any property and make an appointment to view before embarking on any journey to see a property. No person in the employment of the agent has any authority to make any representation about the property, and accordingly any information given is entirely without responsibility on the part of the agents, sellers(s) or lessors(s). Any property particulars are not an offer or contract, nor form part of one.

Sonic / laser Tape: Measurements taken using a sonic / laser tape measure may be subject to a small margin of error. **All Measurements:** All Measurements are Approximate. **Services Not tested:** The Agent has not tested any apparatus, equipment, fixtures and fittings or services and so cannot verify that they are in working order or fit for the purpose. A Buyer is advised to obtain verification from their Solicitor or Surveyor.

Martin & Co Poole

• 109 Commercial Road • Poole • BH14 0JD
T: 01202 710171 • E: poole@martinco.com

01202 710171

<http://www.poole.martinco.com>



Bournemouth Road, Poole

Guide Price £250,000



Chain Free

Two Double Bedrooms

Modern Bathroom

Gated Development

Ashley Cross Location

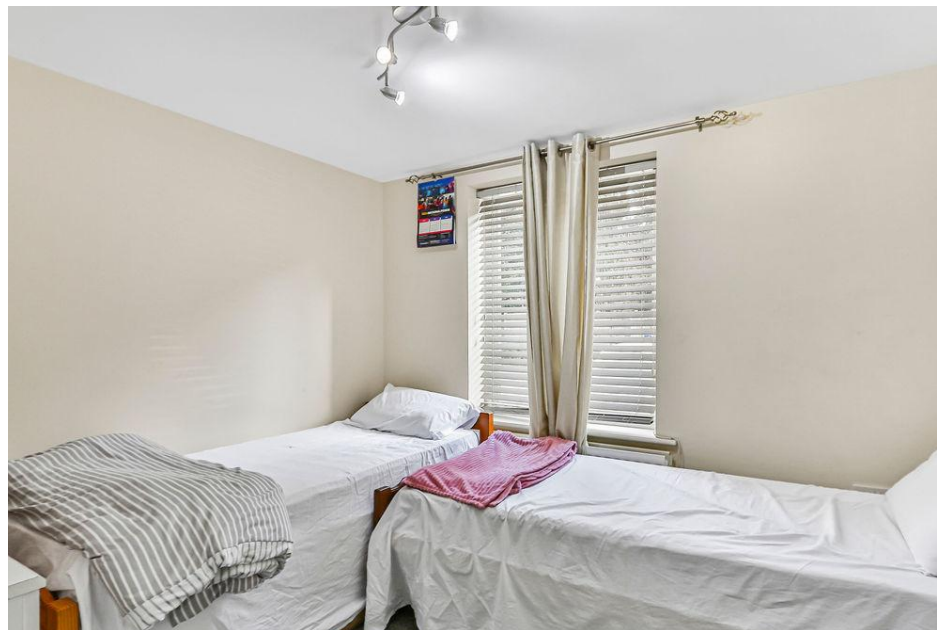
Master with En-Suite

Large Reception Room

Gas Central Heating

EPC Rating: C

Over 810sqft



Why you'll like it

CHAIN FREE. A well presented, two double bedroom, ground floor purpose built apartment situated in a popular gated development right in the heart of Ashley Cross with it popular, shops, bars and amenities. The property benefits from a neutral finish throughout with en-suite shower room to the master bedroom, modern fitted kitchen with appliances, lounge/ diner as well as allocated parking.

Agents Notes:

Tenure: Leasehold
Lease Length: 102 years remaining
Service Charge: £1424 per annum
Ground Rent: £150 per annum
EPC Rating: C
Council Tax Band: B
Holiday Lets: Ask Agent
Pets: Ask Agent

Score	Energy rating	Current	Potential
92+	A		
81-91	B		
69-80	C	76 C	78 C
55-68	D		
39-54	E		
21-38	F		
1-20	G		

1. Money laundering regulations: intending purchasers will be asked to produce identification documentation at a later stage and we would ask for your cooperation in order that there will be no delay in agreeing the sale.

2. General: while we endeavour to make our sales particulars fair, accurate and reliable, they are only a general guide to the property and, accordingly, if there is any point which is of particular importance to you, please contact the office and we will check the position for you, especially if you are contemplating travelling some distance to view the property.

3. Measurements: these approximate room sizes are only intended as general guidance. You must verify the dimensions carefully before ordering carpets or any built-in furniture.

4. Services: please note we have not tested the services or any of the equipment or appliances in this property, accordingly we strongly advise prospective buyers to commission their own survey or service reports before finalising their offer to purchase.

5. These particulars are issued in good faith but do not constitute representations of fact or form part of any offer or contract. The matters referred to in these particulars should be independently verified by prospective buyers or tenants. Neither Martin and Co Bournemouth limited nor any of its employees or agents has any authority to make or give any representation or warranty whatever in relation to this property.

