



4 Tovey Court, Andover, SP10 1PZ
Asking Price £235,000



4 Tovey Court, Andover, Asking Price £235,000

PROPERTY DESCRIPTION BY Miss Molly Scruton

Nestled in the sought-after location of Tovey Court, this delightful two-bedroom family home offers a perfect blend of comfort, style, and practicality.

Upon entering, you're welcomed by a spacious open-plan kitchen and dining area — ideal for modern family living and entertaining. The heart of the home continues into a stunning living space, filled with natural light and offering a warm and inviting atmosphere.

Upstairs, the first floor comprises two generous double bedrooms, an airing cupboard providing additional storage, and a well-appointed family bathroom with a separate toilet for added convenience.

Outside, the rear garden is thoughtfully designed with a patio area — perfect for al fresco dining — a walkway leading to the rear gate, a neatly maintained lawn, and a useful garden shed.

This home is ideal for first-time buyers, young families, or those looking to downsize without compromising on space or quality. Early viewing is highly recommended.



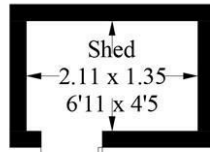


Andover offers a good range of shopping and recreational facilities including a theatre, cinema, new leisure centre, excellent selection of schools and a college for higher education. An abundance of open space and land with a selection of local nature reserve's all within walking distance of the town centre. The town itself boasts a lovely "market town" feel and everything you may need is close at hand. The mainline train station offers a fast service to London Waterloo in just over an hour, and the A303 gives access to London via the M3 and the West Country.

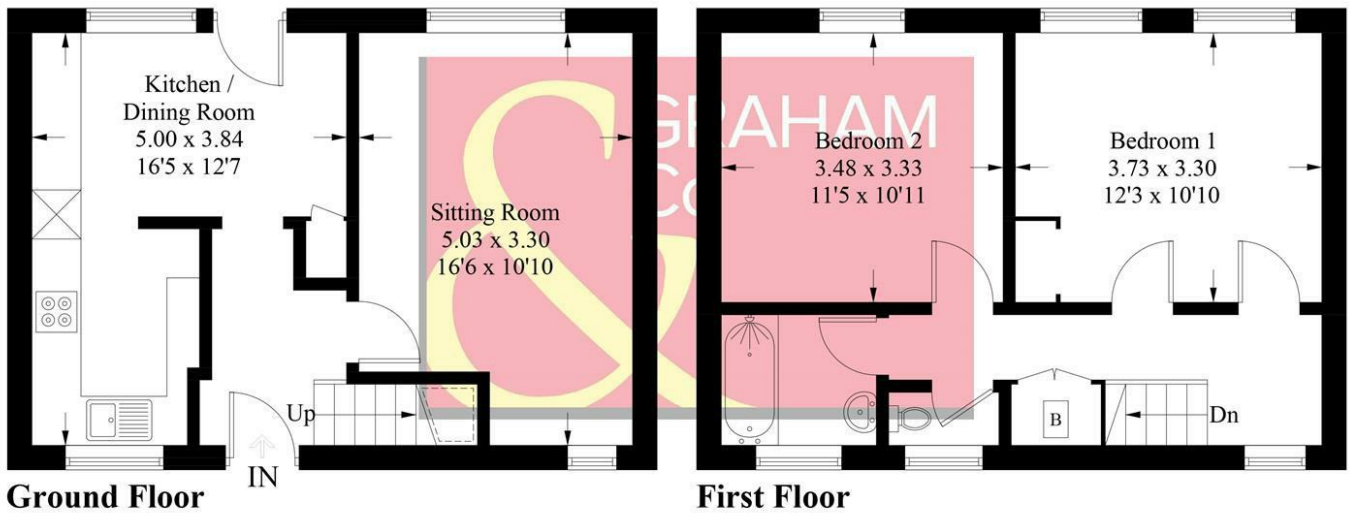


Tovey Court, SP10

Approximate Gross Internal Area = 74.5 sq m / 802 sq ft
Shed = 2.8 sq m / 30 sq ft
Total = 77.3 sq m / 832 sq ft



(Not Shown In Actual
Location / Orientation)



PRODUCED FOR GRAHAM AND CO

Whilst every attempt has been made to ensure the accuracy of the floorplan, measurements of doors, windows and rooms are approximate. These plans are for representation purposes only as defined by RICS Code of Measuring Practice and used as such by any prospective purchaser. © Emzo Marketing (ID1210278)

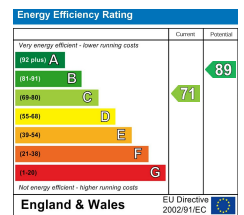
MORTGAGE ADVICE

Across The Market Mortgages

An independent Mortgage brokerage offering expert advice from across the whole market. Whether you are a first-time buyer, home mover, remortgaging or buying a Buy-To-Let investment. Tristan can provide expert & reliable advice, in a clear jargon free language. Book a free consultation today.

E - tristan@atmmortgages.com M - 07545320380

www.atmmortgages.com



Tax Band: C



OPEN 7 DAYS

If you are considering selling your home
please contact us today for your free
no obligation valuation

01264 356500

IMPORTANT: we would like to inform prospective purchasers that these sales particulars have been prepared as a general guide only. A detailed survey has not been carried out, nor the services, appliances and fittings tested. Room sizes should not be relied upon for furnishing purposes and are approximate. If floor plans are included, they are for guidance only and illustration purposes only and may not be to scale. If there are any important matters likely to affect your decision to buy, please contact us before viewing the property.