



1 Woolley Square, Andover, SP10 5EE
Asking Price £290,000



1 Woolley Square, Andover, Asking Price £290,000

PROPERTY DESCRIPTION BY Miss Molly Scruton

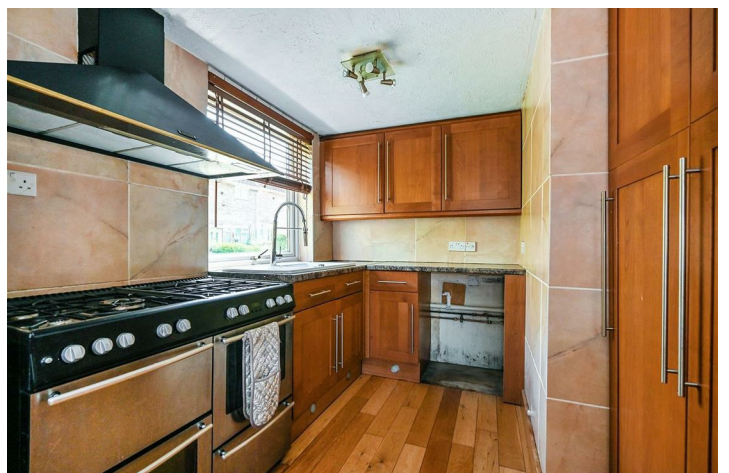
This four-Bedroom Family Home in Woolley Square, Andover

Nestled in a sought-after residential area, this well-presented four-bedroom family home in Constable Court offers generous living space, modern convenience, and a thoughtfully designed layout ideal for family life.

Upon entering the property, you are welcomed by a spacious hallway with a convenient downstairs cloakroom, perfect for guests. To the front of the home, the separate dining room provides an ideal setting for formal meals and family gatherings, complemented by useful built-in storage. The well-appointed kitchen is fitted with ample cupboard space and worktops, offering direct access to the main living areas.

The sitting room at the rear of the property is bright and inviting, flowing seamlessly into a conservatory that enjoys views of the garden. From here, patio doors lead out to the rear garden, making it an excellent space for indoor-outdoor living and entertaining.

Upstairs, the property boasts four good-sized bedrooms, along with further built-in storage on the landing. A modern three-piece family bathroom completes the first-floor



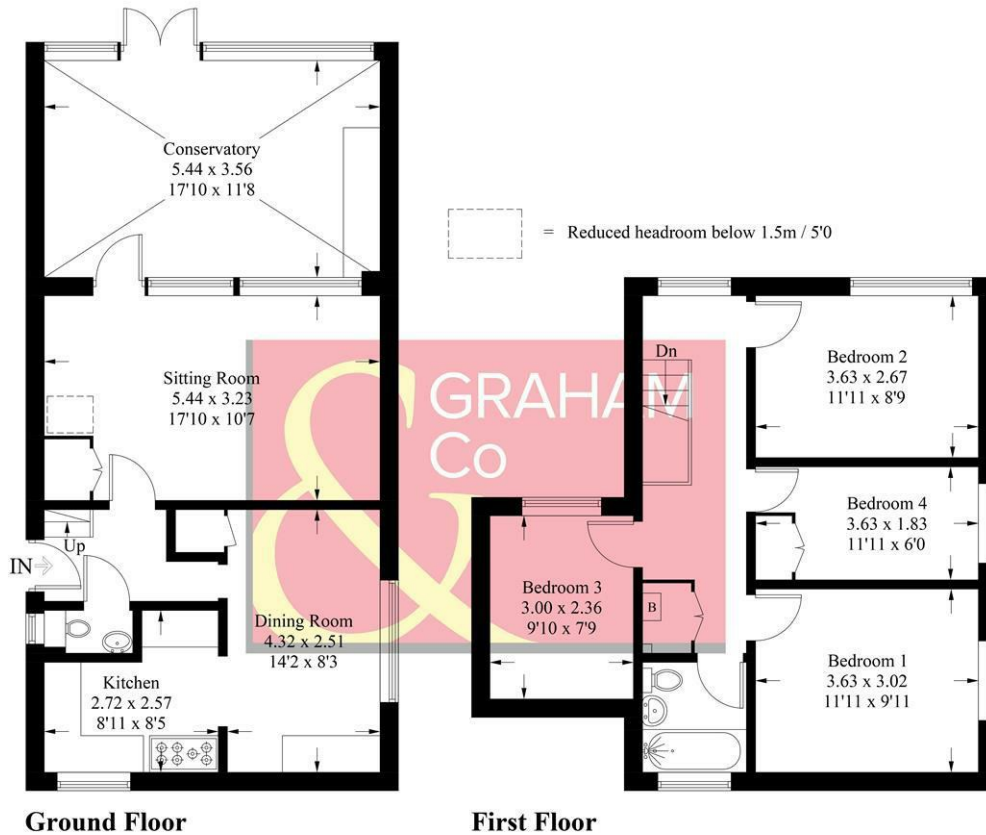


Andover offers a good range of shopping and recreational facilities including a theatre, cinema, new leisure centre, excellent selection of schools and a college for higher education. An abundance of open space and land with a selection of local nature reserve's all within walking distance of the town centre. The town itself boasts a lovely "market town" feel and everything you may need is close at hand. The mainline train station offers a fast service to London Waterloo in just over an hour, and the A303 gives access to London via the M3 and the West Country.



Wooley Square, SP10

Approximate Gross Internal Area = 114.8 sq m / 1236 sq ft



PRODUCED FOR GRAHAM AND CO

Whilst every attempt has been made to ensure the accuracy of the floorplan, measurements of doors, windows and rooms are approximate. These plans are for representation purposes only as defined by RICS Code of Measuring Practice and used as such by any prospective purchaser. © Emzo Marketing (ID1198322)

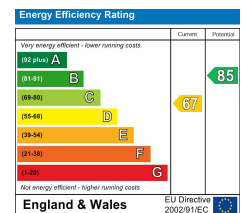
MORTGAGE ADVICE

Across The Market Mortgages

An independent Mortgage brokerage offering expert advice from across the whole market. Whether you are a first-time buyer, home mover, remortgaging or buying a Buy-To-Let investment. Tristan can provide expert & reliable advice, in a clear jargon free language. Book a free consultation today.

E - tristan@atmmortgages.com M - 07545320380

www.atmmortgages.com



Tax Band: C



OPEN 7 DAYS

If you are considering selling your home please contact us today for your free no obligation valuation

01264 356500

IMPORTANT: we would like to inform prospective purchasers that these sales particulars have been prepared as a general guide only. A detailed survey has not been carried out, nor the services, appliances and fittings tested. Room sizes should not be relied upon for furnishing purposes and are approximate. If floor plans are included, they are for guidance only and illustration purposes only and may not be to scale. If there are any important matters likely to affect your decision to buy, please contact us before viewing the property.