



**184 Bury Hill Close, Anna Valley, Andover, SP11 7NB**  
**Asking Price £332,500**





184 Bury Hill Close, Anna Valley Andover,  
Asking Price £332,500

#### PROPERTY DESCRIPTION BY Mr Guy Sommerville

Situated in the popular village of Anna Valley, this well-presented four-bedroom terraced house offers comfortable and practical living in a welcoming village setting, ideal for families and outdoor enthusiasts alike. The property features a dual-aspect living room with a window to the front and French doors opening onto the enclosed rear garden, creating a bright and airy space. A spacious kitchen provides ample storage and worktop space, complemented by a downstairs cloakroom for added convenience. Upstairs, there are four well-proportioned bedrooms and a modern shower room, making it a great option for growing families or investors. The home benefits from gas central heating and is offered with no forward chain, allowing for a straightforward purchase. Located within a well-regarded school catchment area, and with scenic walks around Bury Hill Ring right on the doorstep, this property combines village living with easy access to local amenities and countryside.







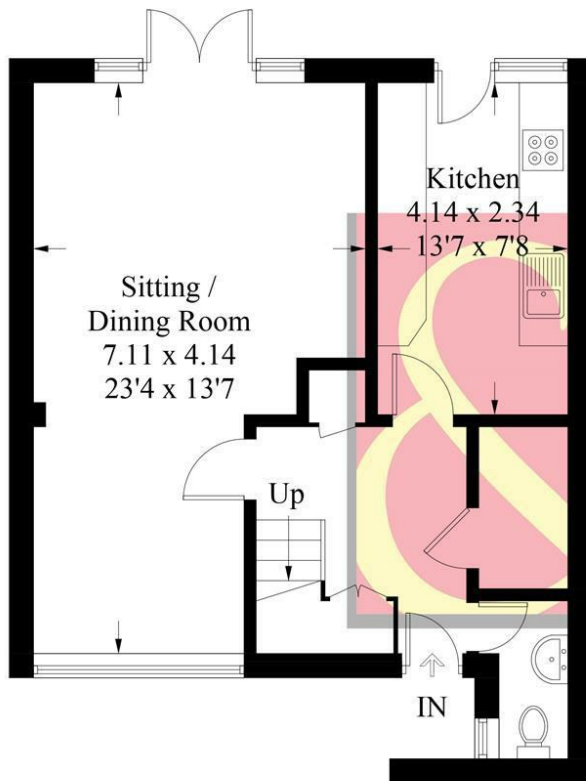
The popular village of Anna Valley offers a recreation ground and garden centre, whilst the neighbouring village of Upper Clatford to the south east has a public house and church. The village of Abbotts Ann lies to the west has two public houses, village shop and well regarded village school. There is another village school in Goodworth Clatford which again has a extremely good reputation. There is a bus stop close to the property with regular services into Andover, about 1½ miles away, which has a comprehensive range of shopping, educational and leisure facilities, as well as a mainline railway station providing fast services to London Waterloo in just over one hour. The cathedral cities of Salisbury and Winchester are both within half an hour's drive away and the A303 is close at hand allowing convenient road access to London and the West Country.



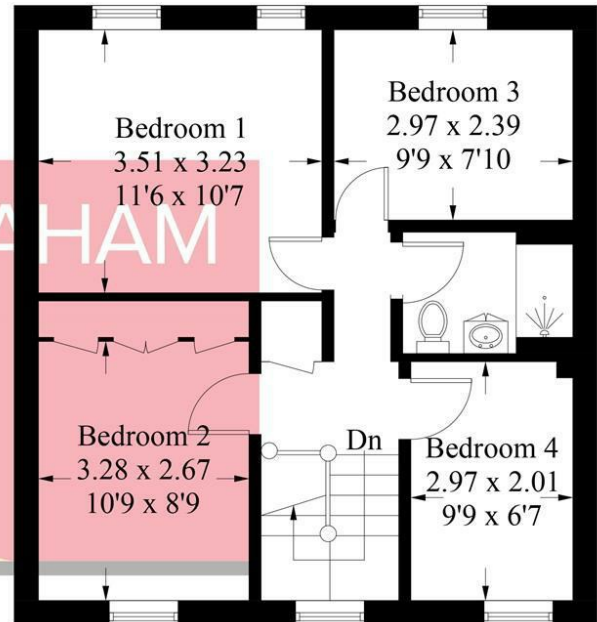


## Anna Valley, Andover, SP11

Approximate Gross Internal Area = 94.6 sq m / 1018 sq ft



**Ground Floor**



**First Floor**

PRODUCED FOR GRAHAM AND CO

Whilst every attempt has been made to ensure the accuracy of the floorplan, measurements of doors, windows and rooms are approximate. These plans are for representation purposes only as defined by RICS Code of Measuring Practice and used as such by any prospective purchaser. © Emzo Marketing (ID524821)

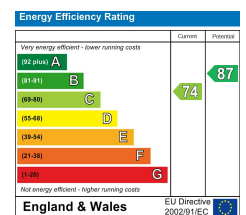
### MORTGAGE ADVICE

#### Across The Market Mortgages

An independent Mortgage brokerage offering expert advice from across the whole market. Whether you are a first-time buyer, home mover, remortgaging or buying a Buy-To-Let investment. Tristan can provide expert & reliable advice, in a clear jargon free language. Book a free consultation today.

E - [tristan@atmmortgages.com](mailto:tristan@atmmortgages.com) M - 07545320380

[www.atmmortgages.com](http://www.atmmortgages.com)



**Tax Band: C**



**OPEN 7 DAYS**

If you are considering selling your home please contact us today for your free no obligation valuation

**01264 356500**

IMPORTANT: we would like to inform prospective purchasers that these sales particulars have been prepared as a general guide only. A detailed survey has not been carried out, nor the services, appliances and fittings tested. Room sizes should not be relied upon for furnishing purposes and are approximate. If floor plans are included, they are for guidance only and illustration purposes only and may not be to scale. If there are any important matters likely to affect your decision to buy, please contact us before viewing the property.