



6 Winchester Gardens, Andover, SP10 2EH
Guide Price £580,000



6 Winchester Gardens, Andover, Guide Price £580,000

PROPERTY DESCRIPTION BY Mr Ross Beeden

Graham & Co are delighted to present this rarely available four-bedroom detached family home, located on one of Andover's most prestigious roads with stunning views over Andover Golf Course.

Offered to the market with no onward chain, this spacious property presents an excellent opportunity for buyers seeking a long-term family home with potential to extend or modernise (subject to the usual planning permissions).

The ground floor features a welcoming entrance hall, a convenient cloakroom, a well-equipped fitted kitchen with access to a porch/boot room, a generous living room, and a separate dining room—ideal for family gatherings or entertaining.

Upstairs offers four well-proportioned bedrooms, a family bathroom, and a separate WC, providing a practical layout for modern family living.

The standout feature of this home is the beautifully maintained, southerly facing rear garden, which backs directly onto the fairways of Andover Golf Course. Surrounded by mature trees and shrubs, the garden provides a private and peaceful setting—perfect for al fresco dining or outdoor family life.



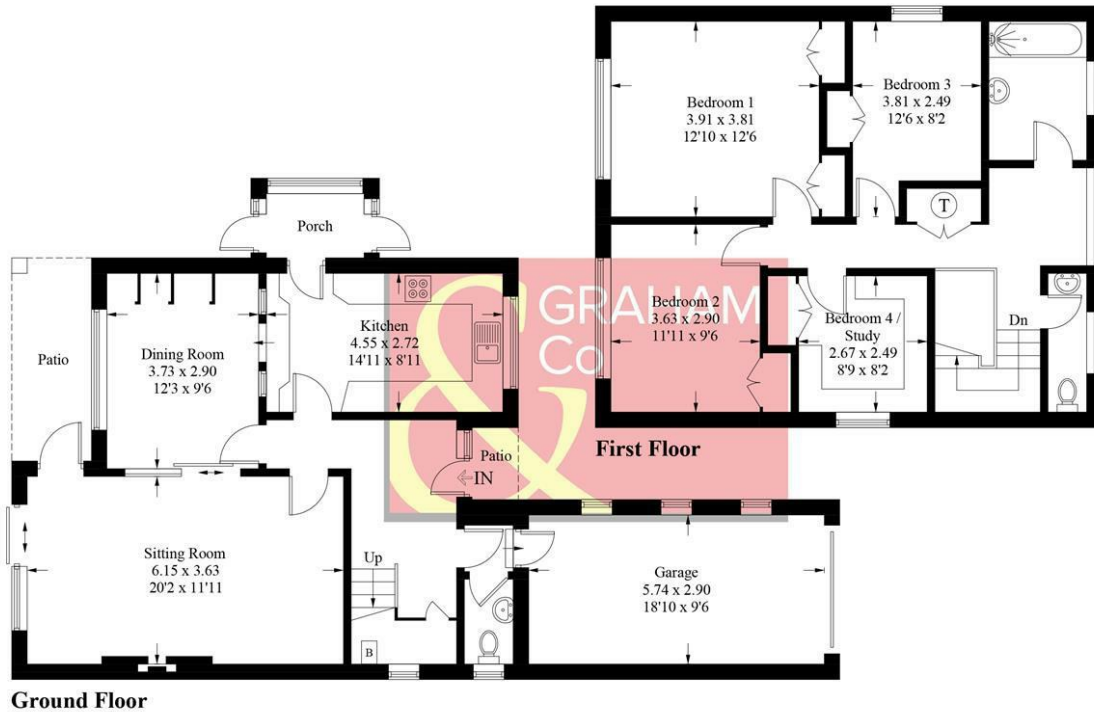


Andover offers a good range of shopping and recreational facilities including a theatre, cinema, new leisure centre, excellent selection of schools and a college for higher education. An abundance of open space and land with a selection of local nature reserve's all within walking distance of the town centre. The town itself boasts a lovely "market town" feel and everything you may need is close at hand. The mainline train station offers a fast service to London Waterloo in just over an hour, and the A303 gives access to London via the M3 and the West Country.



Winchester Gardens, SP10

Approximate Gross Internal Area = 154.5 sq m / 1663 sq ft
(Including Garage)



PRODUCED FOR GRAHAM AND CO

Whilst every attempt has been made to ensure the accuracy of the floorplan, measurements of doors, windows and rooms are approximate. These plans are for representation purposes only as defined by RICS Code of Measuring Practice and used as such by any prospective purchaser. © Emzo Marketing (ID1113215)

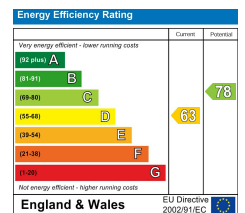
MORTGAGE ADVICE

Across The Market Mortgages

An independent Mortgage brokerage offering expert advice from across the whole market. Whether you are a first-time buyer, home mover, remortgaging or buying a Buy-To-Let investment. Tristan can provide expert & reliable advice, in a clear jargon free language. Book a free consultation today.

E - tristan@atmmortgages.com M - 07545320380

www.atmmortgages.com



Tax Band: F



OPEN 7 DAYS

If you are considering selling your home
please contact us today for your free
no obligation valuation

01264 356500

IMPORTANT: we would like to inform prospective purchasers that these sales particulars have been prepared as a general guide only. A detailed survey has not been carried out, nor the services, appliances and fittings tested. Room sizes should not be relied upon for furnishing purposes and are approximate. If floor plans are included, they are for guidance only and illustration purposes only and may not be to scale. If there are any important matters likely to affect your decision to buy, please contact us before viewing the property.