



56 Fuller Way, Andover, SP11 6UJ  
Asking Price £375,000





56 Fuller Way, Andover,  
Asking Price £375,000

## PROPERTY DESCRIPTION BY Mr Nick King

Graham & Co are delighted to present to the market this exceptional four-bedroom townhouse, showcasing a refined style and elegance throughout.

The accommodation features a welcoming entrance hallway with cloakroom and storage cupboard, modern and stylish high-quality fitted kitchen and a warm and homely living room.

On the first floor, you'll find three elegantly appointed bedrooms, along with a beautifully finished family bathroom and a versatile study area.

The luxurious principal bedroom occupies the top floor, boasting a dressing area with walk in wardrobe and an ensuite shower room. The house has been designed with exceptional attention to detail and is presented to the highest standard throughout.

Externally the property offers a fully enclosed rear garden, which has been sympathetically landscaped, creating a calm and tranquil space. A courtesy door through the garage gives access to the private driveway, which provides off-street parking for two vehicles.







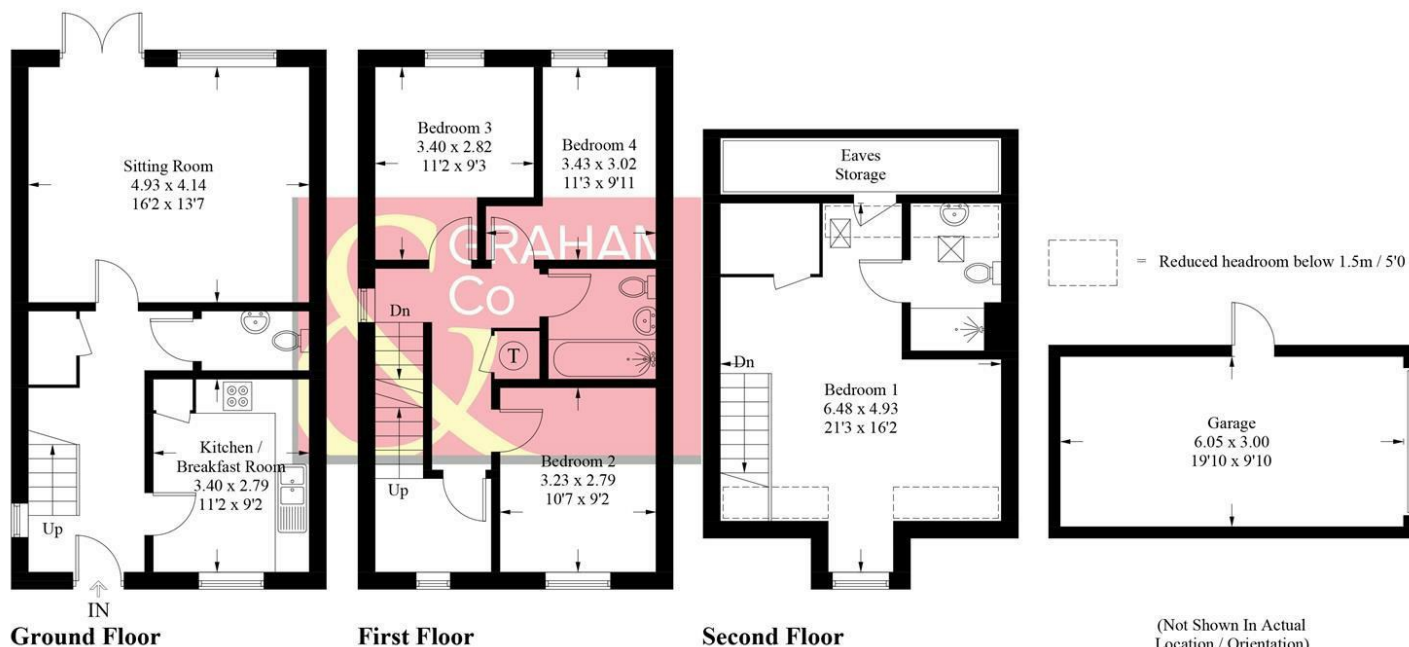
Augusta Park has history woven into its fabric with old flint farm walls from East Anton's time as farmland forming part of a major regeneration programme to this already well-established and bustling Hampshire town. This is an area with its own rich history. Andover is the location of a major crossing point of two important Roman roads: the Portway from Winchester to Marlborough, and the Icknield Way, which runs past Augusta Park on its way between Salisbury and Silchester. The actual site of the crossroads is very close to the development, but excavations in 1970, while revealing many Roman remains, failed to find the exact location. Now the area is a growing and welcoming community with a community centre, sports pavilion and the Endeavour Primary School already open, together with planned shops and village 'local area'. You will feel you belong from the start in a home tailored to modern living set amongst acres of beautifully landscaped open spaces, parks and play areas. Not wanting to travel too far for groceries? Then the brand new Co-op opened in April 2018 is on the doorstep located in East Anton Farm Road, along with the recently opened pizza takeaway for those not wanting to cook. Please note that as with most modern housing developments, this property may have a minimal yearly "estate charge". Please ask for further information.





## Fuller Way, SP11

Approximate Gross Internal Area = 122.9 sq m / 1323 sq ft  
Garage = 18.1 sq m / 195 sq ft  
Total = 141.0 sq m / 1518 sq ft



### PRODUCED FOR GRAHAM AND CO

Whilst every attempt has been made to ensure the accuracy of the floorplan, measurements of doors, windows and rooms are approximate. These plans are for representation purposes only as defined by RICS Code of Measuring Practice and used as such by any prospective purchaser. © Emzo Marketing (ID1168680)

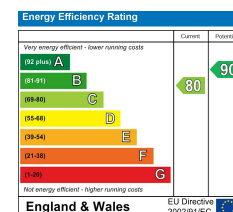
## MORTGAGE ADVICE

### Across The Market Mortgages

An independent Mortgage brokerage offering expert advice from across the whole market. Whether you are a first-time buyer, home mover, remortgaging or buying a Buy-To-Let investment. Tristan can provide expert & reliable advice, in a clear jargon free language. Book a free consultation today.

E - [tristan@atmmortgages.com](mailto:tristan@atmmortgages.com) M - 07545320380

[www.atmmortgages.com](http://www.atmmortgages.com)



Tax Band: D



OPEN 7 DAYS

If you are considering selling your home please contact us today for your free no obligation valuation

**01264 356500**

IMPORTANT: We would like to inform prospective purchasers that these sales particulars have been prepared as a general guide only. A detailed survey has not been carried out, nor the services, appliances and fittings tested. Room sizes should not be relied upon for furnishing purposes and are approximate. If floor plans are included, they are for guidance only and illustration purposes only and may not be to scale. If there are any important matters likely to affect your decision to buy, please contact us before viewing the property.