



18 Whitebeam Close, Andover, SP11 6YY  
Guide Price £352,500





## 18 Whitebeam Close, Andover, Guide Price £352,500

### PROPERTY DESCRIPTION BY Mr Dion McArthur

Welcome to Whitebeam Close, Andover - a charming location for this stunning three-bedroom semi-detached townhouse! Built in 2018 by Taylor Wimpey in the sought-after Chariots development, this property offers modern living at its finest.

As you step inside, you are greeted by a large entrance hall leading to a spacious reception room, the fully fitted kitchen and downstairs WC. The downstairs space offers versatility with the lounge functioning as a lounge/diner, or the kitchen being able to host a small table.

The top floor is dedicated to the luxurious master bedroom with its own en suite, providing a private sanctuary away from the hustle and bustle of daily life. The remaining bedrooms are generously sized, offering ample space for rest and relaxation.

One of the highlights of this property is the landscaped rear garden, ideal for enjoying a morning coffee or hosting summer barbecues with friends and family. Additionally, the allocated parking to the rear provides space for two vehicles, ensuring parking is never a hassle.

Whether you are looking for a comfortable family home or a stylish space to entertain, this townhouse ticks all the boxes. Don't miss out on the opportunity to make this house your home in the heart of Andover.





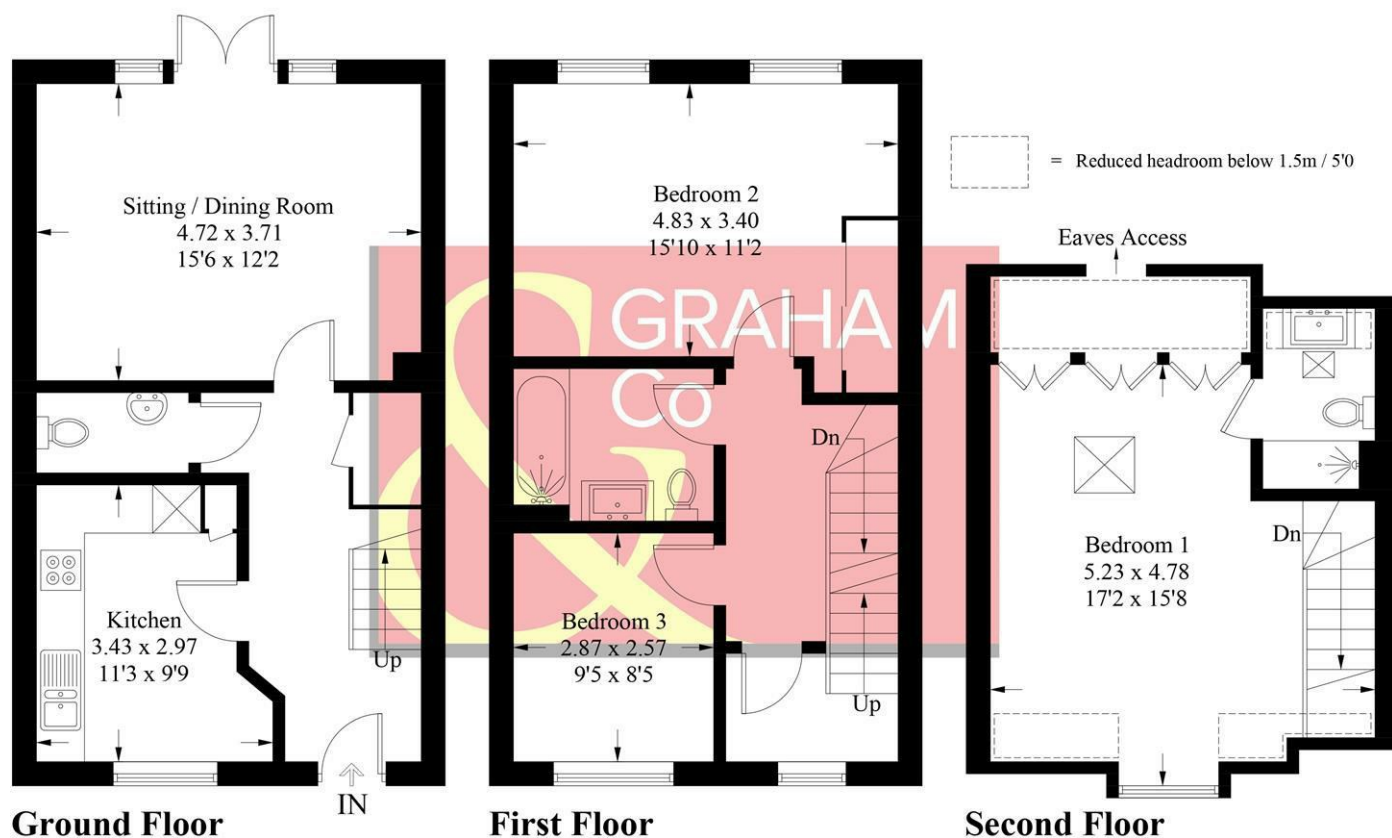


Augusta Park has history woven into its fabric with old flint farm walls from East Anton's time as farmland forming part of a major regeneration programme to this already well-established and bustling Hampshire town. This is an area with its own rich history. Andover is the location of a major crossing point of two important Roman roads: the Portway from Winchester to Marlborough, and the Icknield Way, which runs past Augusta Park on its way between Salisbury and Silchester. The actual site of the crossroads is very close to the development, but excavations in 1970, while revealing many Roman remains, failed to find the exact location. Now the area is a growing and welcoming community with a community centre, sports pavilion and the Endeavour Primary School already open, together with planned shops and village 'local area'. You will feel you belong from the start in a home tailored to modern living set amongst acres of beautifully landscaped open spaces, parks and play areas. Not wanting to travel too far for groceries? Then the brand new Co-op opened in April 2018 is on the doorstep located in East Anton Farm Road, along with the recently opened pizza takeaway for those not wanting to cook. Please note that as with most modern housing developments, this property may have a minimal yearly "estate charge". Please ask for further information.



## Whitebeam Close, SP116

Approximate Gross Internal Area = 109.9 sq m / 1183 sq ft



PRODUCED FOR GRAHAM AND CO

Whilst every attempt has been made to ensure the accuracy of the floorplan, measurements of doors, windows and rooms are approximate. These plans are for representation purposes only as defined by RICS Code of Measuring Practice and used as such by any prospective purchaser. © Emzo Marketing (ID1148986)

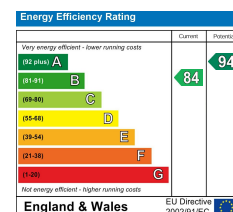
### MORTGAGE ADVICE

#### Across The Market Mortgages

An independent Mortgage brokerage offering expert advice from across the whole market. Whether you are a first-time buyer, home mover, remortgaging or buying a Buy-To-Let investment. Tristan can provide expert & reliable advice, in a clear jargon free language. Book a free consultation today.

E - [tristan@atmmortgages.com](mailto:tristan@atmmortgages.com) M - 07545320380

[www.atmmortgages.com](http://www.atmmortgages.com)



Tax Band: D



OPEN 7 DAYS

If you are considering selling your home please contact us today for your free no obligation valuation

**01264 356500**

IMPORTANT: we would like to inform prospective purchasers that these sales particulars have been prepared as a general guide only. A detailed survey has not been carried out, nor the services, appliances and fittings tested. Room sizes should not be relied upon for furnishing purposes and are approximate. If floor plans are included, they are for guidance only and illustration purposes only and may not be to scale. If there are any important matters likely to affect your decision to buy, please contact us before viewing the property.