



4 Kew Walk, Andover, SP10 3UL
Guide Price £375,000



4 Kew Walk, Andover,
Guide Price £375,000

PROPERTY DESCRIPTION BY Mr Dion McArthur

Being sold for the first time since being built, nestled in the charming Kew Walk of Andover, this delightful link-detached house from the 1990's offers a perfect blend of comfort and convenience. Boasting two inviting reception rooms, three cosy bedrooms, and a modern bathroom, this property is ideal for families seeking a new place to call home.

The garage has been thoughtfully converted into a versatile space that can serve as a utility room, a study, or an additional reception room, providing flexibility to suit your lifestyle, with the added benefit of a downstairs WC. The rear extension has transformed the house, creating a spacious open-plan kitchen diner that is perfect for entertaining guests or enjoying family meals.

The property features an almost brand-new fitted kitchen and boiler, ensuring that you can move in hassle-free and start enjoying your new home right away. With parking available for numerous vehicles on the driveway, you'll never have to worry about finding a spot after a long day.

Conveniently located near various schools, local amenities, including convenience stores, the A303, and Andover train station, this house offers easy access to everything you need. Don't miss out on the opportunity to make this lovely property your own and start creating lasting memories in this wonderful community.



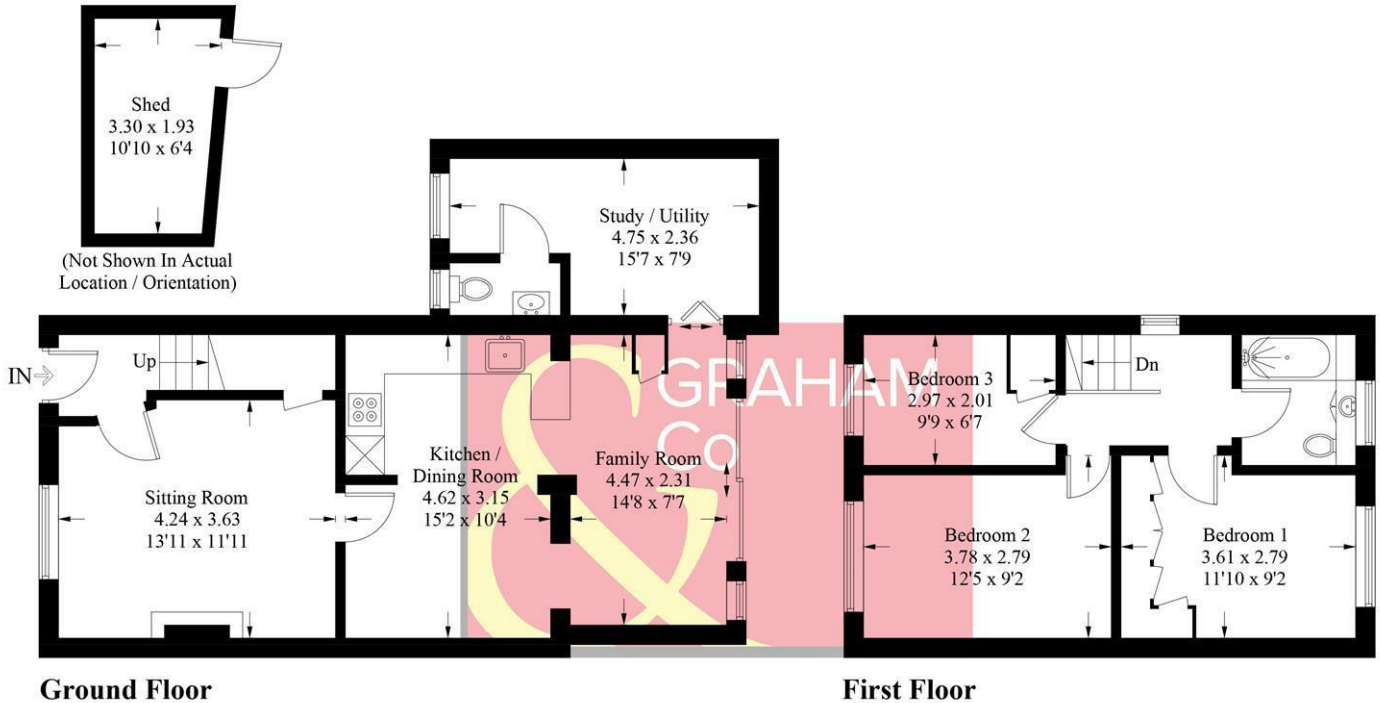


Andover offers a good range of shopping and recreational facilities including a theatre, cinema, new leisure centre, excellent selection of schools and a college for higher education. An abundance of open space and land with a selection of local nature reserve's all within walking distance of the town centre. The town itself boasts a lovely "market town" feel and everything you may need is close at hand. The mainline train station offers a fast service to London Waterloo in just over an hour, and the A303 gives access to London via the M3 and the West Country.



Kew Walk, SP10

Approximate Gross Internal Area = 95.4 sq m / 1027 sq ft
 Shed = 5.9 sq m / 63 sq ft
 Total = 101.3 sq m / 1090 sq ft



PRODUCED FOR GRAHAM AND CO

Whilst every attempt has been made to ensure the accuracy of the floorplan, measurements of doors, windows and rooms are approximate. These plans are for representation purposes only as defined by RICS Code of Measuring Practice and used as such by any prospective purchaser. © Emzo Marketing (ID1147967)

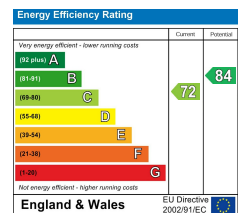
MORTGAGE ADVICE

Across The Market Mortgages

An independent Mortgage brokerage offering expert advice from across the whole market. Whether you are a first-time buyer, home mover, remortgaging or buying a Buy-To-Let investment. Tristan can provide expert & reliable advice, in a clear jargon free language. Book a free consultation today.

E - tristan@atmmortgages.com M - 07545320380

www.atmmortgages.com



Tax Band: D



OPEN 7 DAYS

If you are considering selling your home please contact us today for your free no obligation valuation

01264 356500

IMPORTANT: We would like to inform prospective purchasers that these sales particulars have been prepared as a general guide only. A detailed survey has not been carried out, nor the services, appliances and fittings tested. Room sizes should not be relied upon for furnishing purposes and are approximate. If floor plans are included, they are for guidance only and illustration purposes only and may not be to scale. If there are any important matters likely to affect your decision to buy, please contact us before viewing the property.