



19a Greensey, Andover, SP11 9HY

Asking Price £160,000

PROPERTY DESCRIPTION BY *Mr Guy Sommerville*

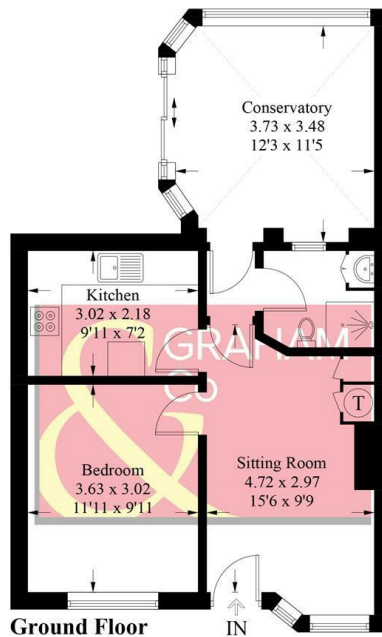
Nestled in the Hampshire village of Ragged Appleshaw, this one-bedroom semi-detached bungalow offers a fantastic opportunity for those seeking a home with potential. Positioned on a corner plot, the property features off-road parking, gardens to the front, side, and a patio area to the rear, perfect for outdoor relaxation.

The interior comprises a bright sitting room, a well-proportioned bedroom, a shower room, and a glass-roofed conservatory that invites plenty of natural light. While the bungalow would benefit from some updating, it boasts double-glazed windows and electric heating, providing a comfortable foundation for modernisation.

Offered with no onward chain, this is an ideal prospect for anyone looking to put their personal touch on a village home

Greensey, SP11

Approximate Gross Internal Area = 50.9 sq m / 548 sq ft

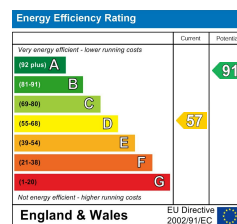


Ground Floor

PRODUCED FOR GRAHAM AND CO

Whilst every attempt has been made to ensure the accuracy of the floorplan, measurements of doors, windows and rooms are approximate. These plans are for representation purposes only as defined by RICS Code of Measuring Practice and used as such by any prospective purchaser. © Emzo Marketing (ID1127468)

DIRECTIONS



Tax Band: B



OPEN 7 DAYS

If you are considering selling your home please contact us today for your free no obligation valuation

01264 356500

IMPORTANT: we would like to inform prospective purchasers that these sales particulars have been prepared as a general guide only. A detailed survey has not been carried out, nor the services, appliances and fittings tested. Room sizes should not be relied upon for furnishing purposes and are approximate. If floor plans are included, they are for guidance only and illustration purposes only and may not be to scale. If there are any important matters likely to affect your decision to buy, please contact us before viewing the property.