



55 Lillywhite Crescent, Andover, SP10 5NA
Asking Price £580,000



55 Lillywhite Crescent, Andover,
Asking Price £580,000

PROPERTY DESCRIPTION BY Mr Nick King

Graham & Co are delighted to offer for sale, this five bedroom detached family home, with versatile living arrangements. Recent refurbished and redecoration has been undertaken throughout much of the property, creating a stylish and contemporary home. The accommodation comprises; entrance hall with cloakroom, living room, dining room kitchen/diner, conservatory and utility room. The present owners have amended the ground floor to also include a bedroom with ensuite bathroom. This adaptable space offers a variety of potential uses including, bedroom, home office, playroom, studio or gym.

To the first floor there are four bedrooms, with an en-suite shower room to the primary bedroom and further family bathroom. Outside a driveway for five vehicles leads to the single garage. The rear south facing garden is mainly laid to lawn, with the addition of a newly laid patio area, pond and a Summerhouse and side gated access.





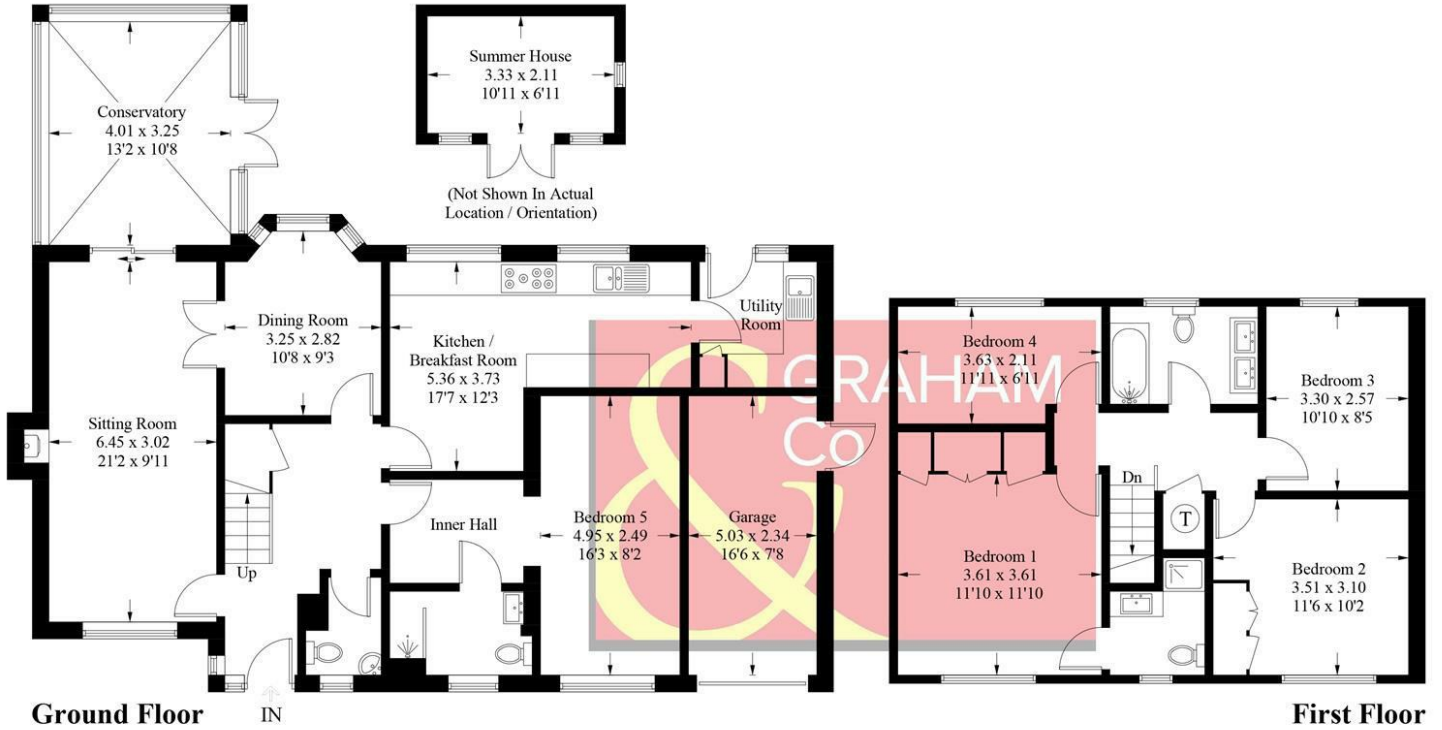
Andover Profile

Andover offers a good range of shopping and recreational facilities including a theatre, cinema, new leisure centre, excellent selection of schools and a college for higher education. An abundance of open space and land with a selection of local nature reserve's all within walking distance of the town centre. The town itself boast a lovely "market town" feel and everything you may need is close at hand. The mainline train station offers a fast service to London Waterloo in just over an hour, and the A303 gives access to London via the M3 and the West Country.



Lillywhite Crescent, SP10

Approximate Gross Internal Area = 162.1 sq m / 1745 sq ft
 Garage / Summer House = 18.7 sq m / 201 sq ft
 Total = 180.8 sq m / 1946 sq ft



PRODUCED FOR GRAHAM AND CO

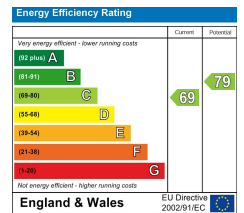
Whilst every attempt has been made to ensure the accuracy of the floorplan, measurements of doors, windows and rooms are approximate. These plans are for representation purposes only as defined by RICS Code of Measuring Practice and used as such by any prospective purchaser. © Emzo Marketing (ID1070366)

MORTGAGE ADVICE Across The Market Mortgages

An independent Mortgage brokerage offering expert advice from across the whole market. Whether you are a first-time buyer, home mover, remortgaging or buying a Buy-To-Let investment. Tristan can provide expert & reliable advice, in a clear jargon free language. Book a free consultation today.

E - tristan@atmmortgages.com M - 07545320380

www.atmmortgages.com



Tax Band: F



OPEN 7 DAYS

If you are considering selling your home please contact us today for your free no obligation valuation

01264 356500

IMPORTANT: We would like to inform prospective purchasers that these sales particulars have been prepared as a general guide only. A detailed survey has not been carried out, nor the services, appliances and fittings tested. Room sizes should not be relied upon for furnishing purposes and are approximate. If floor plans are included, they are for guidance only and illustration purposes only and may not be to scale. If there are any important matters likely to affect your decision to buy, please contact us before viewing the property.

