



6 Saffrons Mead, 2 Grassington Road, Eastbourne, BN20 7BG

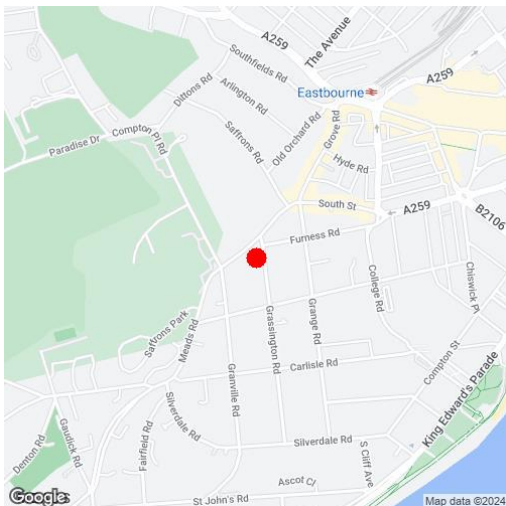
Price £239,950 | Share of Freehold



TOWN CENTRE OFFICE
01323 416716

MEADS STREET OFFICE
01323 737962

Available with no onward chain- A well presented two bedroom apartment enjoying a popular and convenient location virtually opposite the Saffrons cricket ground and within a few hundred yards of Eastbourne town centre and railway station. The apartment is approached via an attractive entrance foyer with lift and stairs rising to the first floor. The light and airy accommodation is set around a spacious reception hall and includes a generous living room with dual aspect windows, a fitted kitchen with integrated appliances and two double bedrooms, both with fitted wardrobes and one with an ensuite shower room and the other served by a bathroom. The apartment has been thoughtfully arranged with the principal rooms arranged at the rear to take advantage of the westerly aspect. Other benefits include gas central heating, sealed unit double glazing a covered parking space together with a share in the freehold of Saffrons Mead.





At a Glance:

- Convenient Lower Meads location within a few hundred yards of the town centre
- Two double bedrooms with fitted wardrobes
- Two bath/shower rooms (one en-suite)
- Light and airy accommodation
- Covered parking space
- Gas central heating
- Sealed unit double glazing

Accommodation:

COMMUNAL FRONT DOOR

STAIRS & PASSENGER LIFT TO FIRST FLOOR
FRONT DOOR

RECEPTION HALL

SITTING ROOM

17'9" (5.41m) x 16'0" (4.88m) Max

KITCHEN

13'6" (4.11m) x 6'6" (1.98m)

BEDROOM 1

13'0" (3.96m) x 12'3" (3.73m) including depth of fitted wardrobe cupboards to one wall.

EN-SUITE SHOWER ROOM/WC

BEDROOM 2

14'0" (4.27m) x 9'4" (2.84m) including depth of fitted wardrobe cupboards to one wall.

BATHROOM/WC

OUTSIDE:

COMMUNAL GARDENS

COVERED PARKING SPACE

COUNCIL TAX:

Band "E"

EPC:

"C"

LEASE:

999 years from 1/6/1988

MAINTENANCE:

Approximately £3,465 per annum

GROUND RENT:

Nil.

PETS:

Not allowed

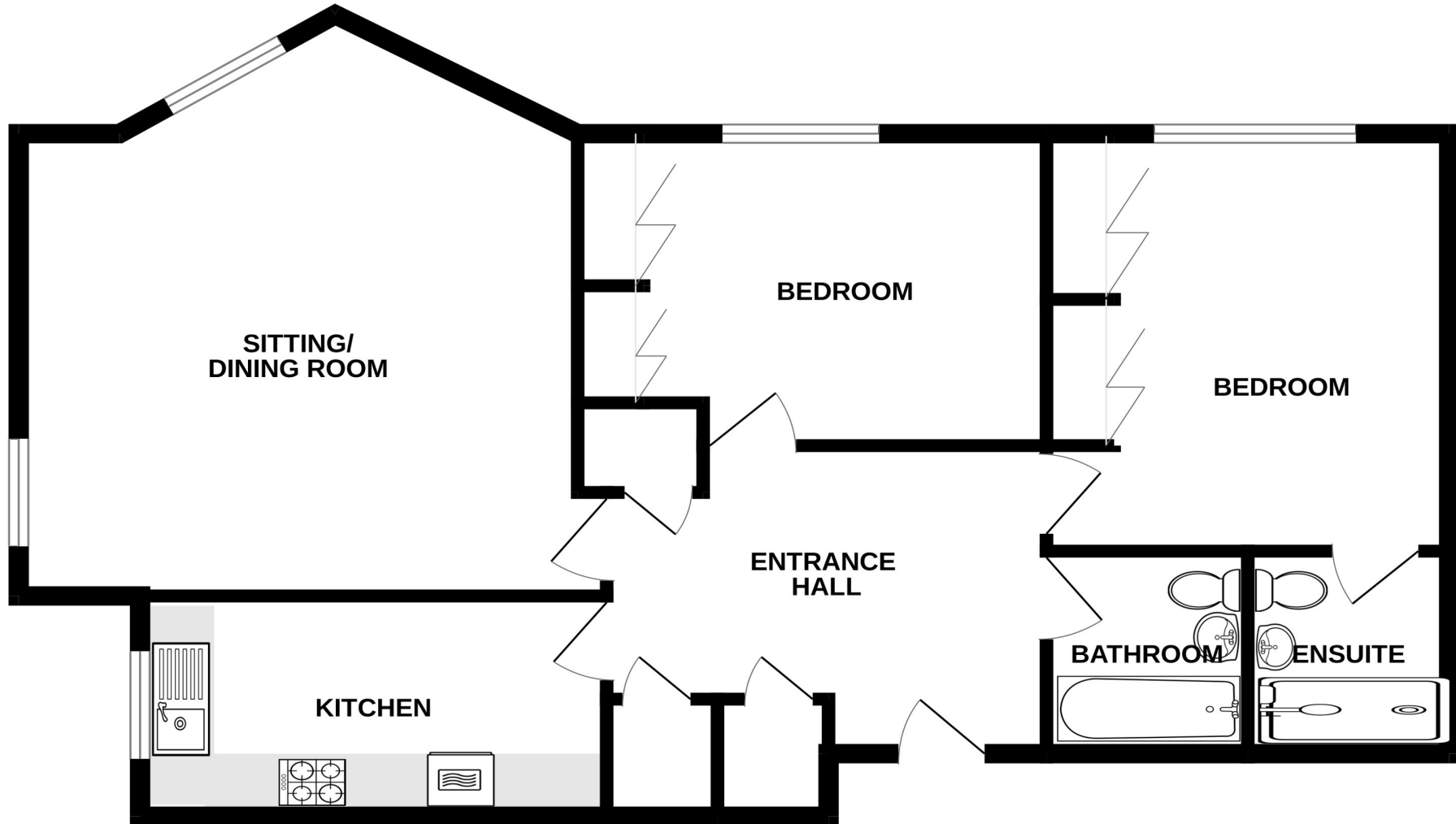
SUB-LETTING:

Allowed

(All details concerning the terms of the Lease and outgoings are subject to verification)



GROUND FLOOR
829 sq.ft. (77.0 sq.m.) approx.



Ref: 1

Whilst every care has been taken in the preparation of these particulars, neither the agents nor the vendor accept any responsibility for error or omission, nor do they constitute an offer or contract. Please note we have not tested any apparatus, fixtures, fittings, or services. Interested parties must undertake their own investigation into the working order of these items. All measurements are approximate whilst photographs and floorplans are provided for guidance only.

LS Leaper
Stanbrook

5 Gildredge Road, Eastbourne BN21 4RB
01323 416716

28 Meads Street, Eastbourne BN20 7QY
01323 737962

website
www.leaperstanbrook.co.uk

email
sales@leaperstanbrook.co.uk