



47 Meads Street, Eastbourne, BN20 7RN

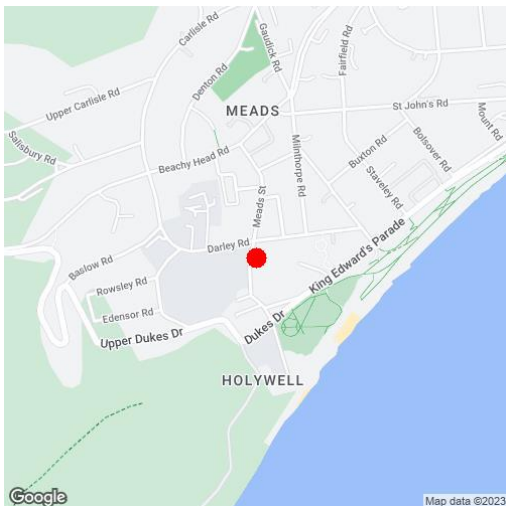
Price £690,000 | Freehold



TOWN CENTRE OFFICE
01323 416716

MEADS STREET OFFICE
01323 737962

Enviably located in the heart of Meads village, a deceptively spacious three (originally 4) bedroom house within five hundred yards of Meads seafront and 200 yards of Meads Street shopping facilities that has been beautifully refurbished within the last 18 months. This charming bay fronted red brick house forms part of a terrace of just three properties and provides well proportioned accommodation that retains much of its period character including some fine cast iron fireplaces. The ground floor provides three reception rooms one of which is open plan to the newly re-fitted kitchen with a comprehensive range of contemporary wall and base units beneath quartz work surfaces. Integrated appliances include twin Neff eye level ovens, Neff microwave oven and Miele 4 ring induction hob with Neff filter hood over, AEG dishwasher and an American style LG fridge/freezer. The three first floor bedrooms are all double rooms and are served by a 12' x 9' bathroom. The house is set back from the road with the potential to create off-road parking in the front garden, subject to any necessary consents being obtained. Parking is also restricted to residents with parking permits in this section of Meads Street. The walled rear garden has a raised decked area and slate chippings flanked by flower borders with a gate providing rear access. An internal inspection is essential to appreciate the merits of this delightful home.





At a Glance:

- Comprehensively refurbished within the last 18 months
- Envious location in the heart of Meads village
- Three (originally four) bedrooms
- Three reception rooms
- Beautifully fitted kitchen
- 12' x 9' bathroom
- Attractive gardens
- Gas central heating
- Sealed unit double glazing

Accommodation:

ENTRANCE HALL

CLOAKROOM

SITTING ROOM
14'8" (4.47m) x 12'0" (3.66m)

STUDY
12'0" (3.66m) x 12'0" (3.66m)

OPEN PLAN KITCHEN/DINING ROOM
24'4" (7.42m) x 12'0" (3.66m)

LANDING

BEDROOM 1
15'0" (4.57m) x 15'0" (4.57m)

BEDROOM 2
12'5" (3.78m) x 12'0" (3.66m)

BEDROOM 3
12'5" (3.78m) x 12'3" (3.73m)

SHOWER ROOM/WC

SEPARATE WC/LAUNDRY ROOM

OUTSIDE:

GARDENS FRONT & REAR

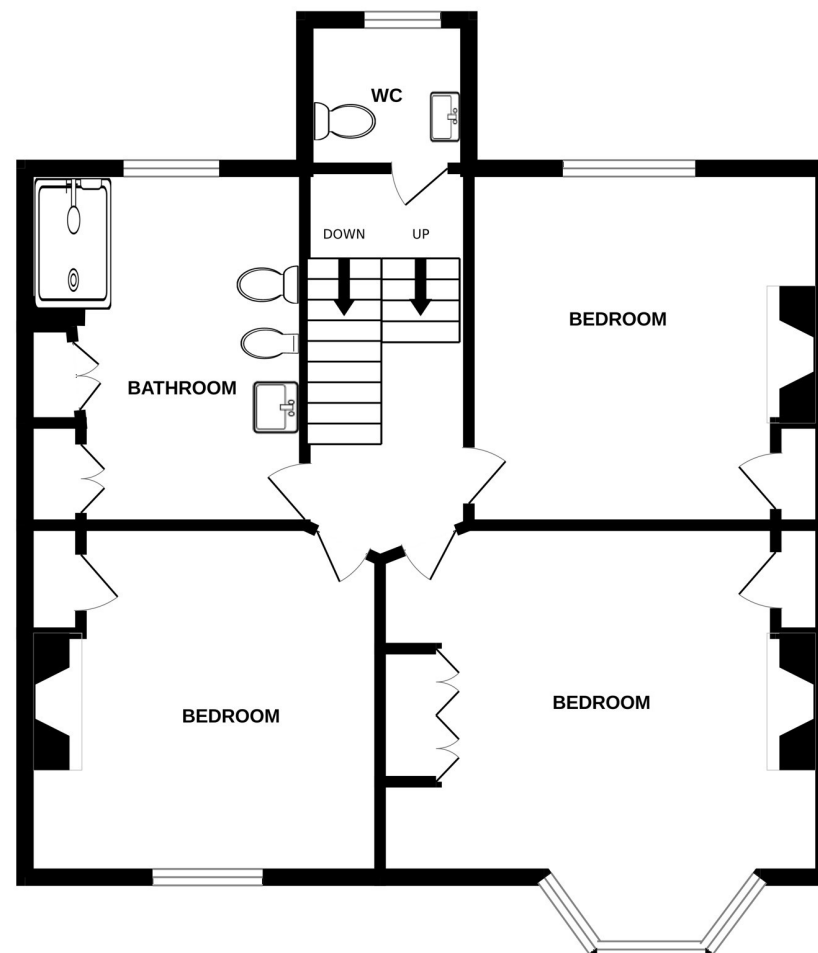
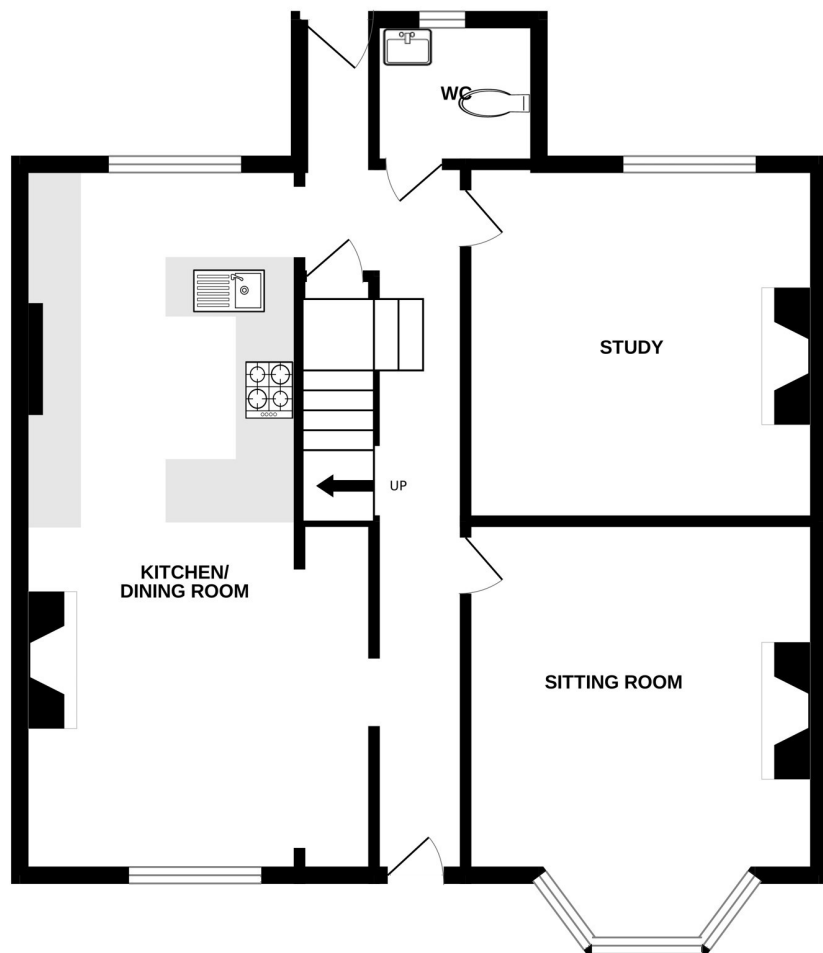
COUNCIL TAX:
Band "E"

EPC:
"D"



GROUND FLOOR

1ST FLOOR



Ref: 1

Whilst every care has been taken in the preparation of these particulars, neither the agents nor the vendor accept any responsibility for error or omission, nor do they constitute an offer or contract. Please note we have not tested any apparatus, fixtures, fittings, or services. Interested parties must undertake their own investigation into the working order of these items. All measurements are approximate whilst photographs and floorplans are provided for guidance only.



5 Gildredge Road, Eastbourne BN21 4RB
01323 416716

28 Meads Street, Eastbourne BN20 7QY
01323 737962

website
www.leaperstanbrook.co.uk

email
sales@leaperstanbrook.co.uk



47 Meads Street, Eastbourne, BN20 7RN

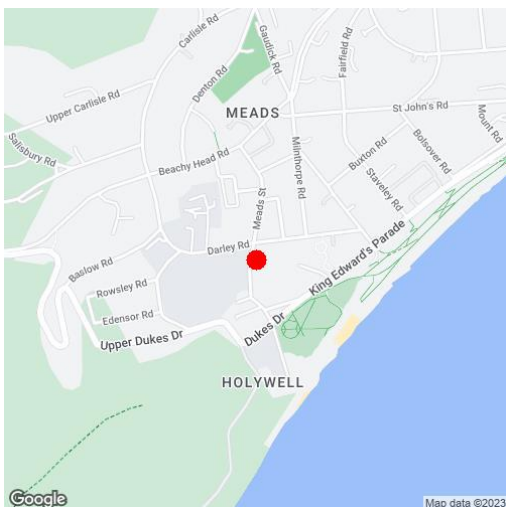
Price £690,000 | Freehold



TOWN CENTRE OFFICE
01323 416716

MEADS STREET OFFICE
01323 737962

Enviably located in the heart of Meads village, a deceptively spacious three (originally 4) bedroom house within five hundred yards of Meads seafront and 200 yards of Meads Street shopping facilities that has been beautifully refurbished within the last 18 months. This charming bay fronted red brick house forms part of a terrace of just three properties and provides well proportioned accommodation that retains much of its period character including some fine cast iron fireplaces. The ground floor provides three reception rooms one of which is open plan to the newly re-fitted kitchen with a comprehensive range of contemporary wall and base units beneath quartz work surfaces. Integrated appliances include twin Neff eye level ovens, Neff microwave oven and Miele 4 ring induction hob with Neff filter hood over, AEG dishwasher and an American style LG fridge/freezer. The three first floor bedrooms are all double rooms and are served by a 12' x 9' bathroom. The house is set back from the road with the potential to create off-road parking in the front garden, subject to any necessary consents being obtained. Parking is also restricted to residents with parking permits in this section of Meads Street. The walled rear garden has a raised decked area and slate chippings flanked by flower borders with a gate providing rear access. An internal inspection is essential to appreciate the merits of this delightful home.





At a Glance:

- Comprehensively refurbished within the last 18 months
- Envious location in the heart of Meads village
- Three (originally four) bedrooms
- Three reception rooms
- Beautifully fitted kitchen
- 12' x 9' bathroom
- Attractive gardens
- Gas central heating
- Sealed unit double glazing

Accommodation:

ENTRANCE HALL

CLOAKROOM

SITTING ROOM

14'8" (4.47m) x 12'0" (3.66m)

STUDY

12'0" (3.66m) x 12'0" (3.66m)

OPEN PLAN KITCHEN/DINING ROOM

24'4" (7.42m) x 12'0" (3.66m)

LANDING

BEDROOM 1

15'0" (4.57m) x 15'0" (4.57m)

BEDROOM 2

12'5" (3.78m) x 12'0" (3.66m)

BEDROOM 3

12'5" (3.78m) x 12'3" (3.73m)

SHOWER ROOM/WC

SEPARATE WC/LAUNDRY ROOM

OUTSIDE:

GARDENS FRONT & REAR

COUNCIL TAX:

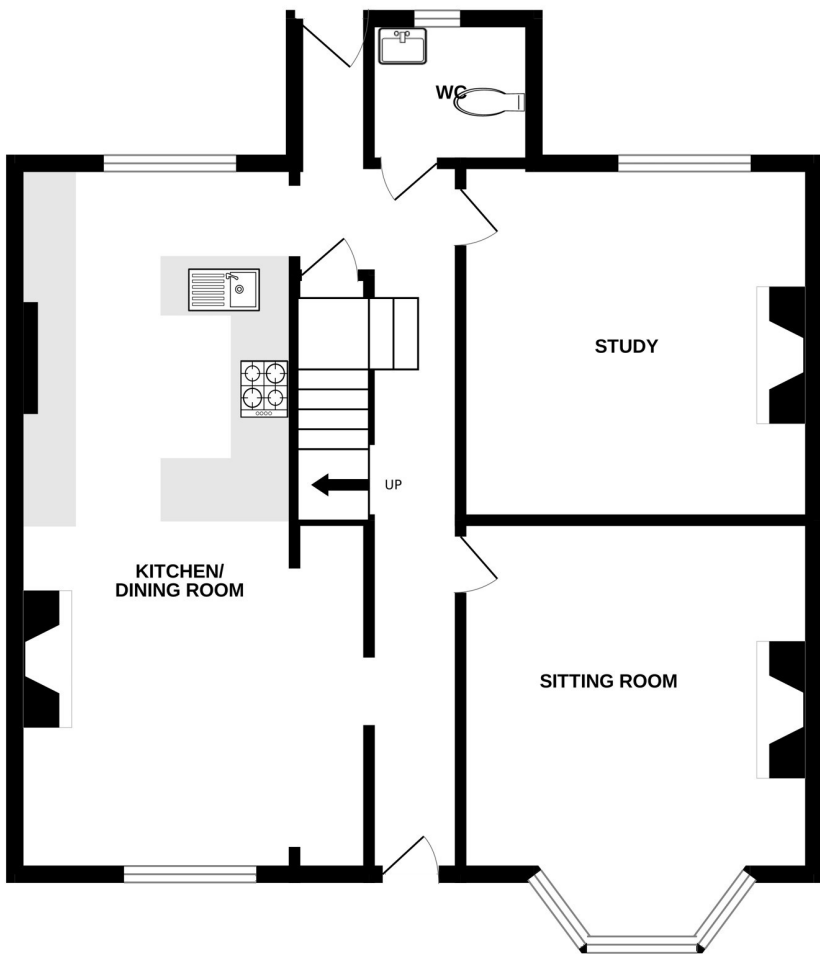
Band "E"

EPC:

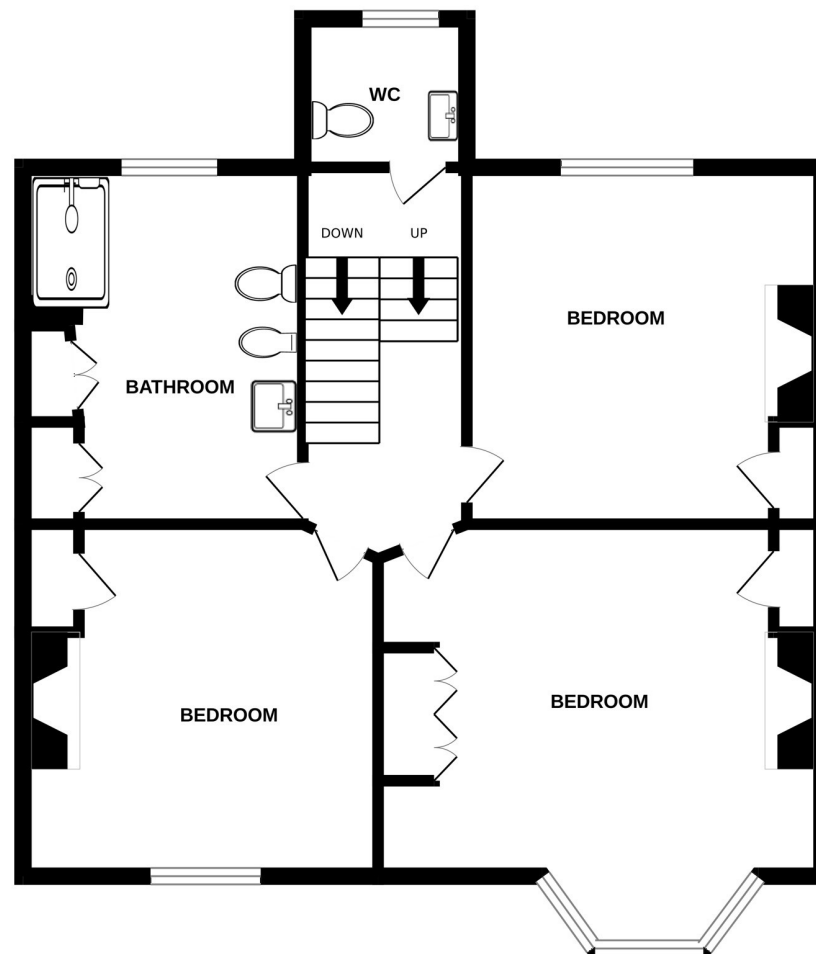
"D"



GROUND FLOOR



1ST FLOOR



Ref: 1

Whilst every care has been taken in the preparation of these particulars, neither the agents nor the vendor accept any responsibility for error or omission, nor do they constitute an offer or contract. Please note we have not tested any apparatus, fixtures, fittings, or services. Interested parties must undertake their own investigation into the working order of these items. All measurements are approximate whilst photographs and floorplans are provided for guidance only.



5 Gildredge Road, Eastbourne BN21 4RB
01323 416716

28 Meads Street, Eastbourne BN20 7QY
01323 737962

website
www.leaperstanbrook.co.uk

email
sales@leaperstanbrook.co.uk



47 Meads Street, Eastbourne, BN20 7RN

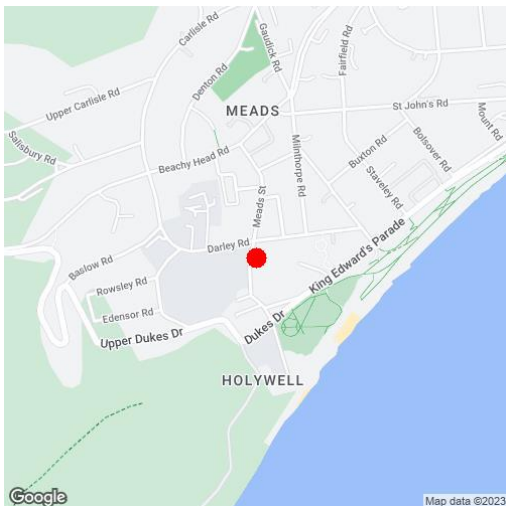
Price £690,000 | Freehold



TOWN CENTRE OFFICE
01323 416716

MEADS STREET OFFICE
01323 737962

Enviably located in the heart of Meads village, a deceptively spacious three (originally 4) bedroom house within five hundred yards of Meads seafront and 200 yards of Meads Street shopping facilities that has been beautifully refurbished within the last 18 months. This charming bay fronted red brick house forms part of a terrace of just three properties and provides well proportioned accommodation that retains much of its period character including some fine cast iron fireplaces. The ground floor provides three reception rooms one of which is open plan to the newly re-fitted kitchen with a comprehensive range of contemporary wall and base units beneath quartz work surfaces. Integrated appliances include twin Neff eye level ovens, Neff microwave oven and Miele 4 ring induction hob with Neff filter hood over, AEG dishwasher and an American style LG fridge/freezer. The three first floor bedrooms are all double rooms and are served by a 12' x 9' bathroom. The house is set back from the road with the potential to create off-road parking in the front garden, subject to any necessary consents being obtained. Parking is also restricted to residents with parking permits in this section of Meads Street. The walled rear garden has a raised decked area and slate chippings flanked by flower borders with a gate providing rear access. An internal inspection is essential to appreciate the merits of this delightful home.





At a Glance:

- Comprehensively refurbished within the last 18 months
- Envious location in the heart of Meads village
- Three (originally four) bedrooms
- Three reception rooms
- Beautifully fitted kitchen
- 12' x 9' bathroom
- Attractive gardens
- Gas central heating
- Sealed unit double glazing

Accommodation:

ENTRANCE HALL

CLOAKROOM

SITTING ROOM

14'8" (4.47m) x 12'0" (3.66m)

STUDY

12'0" (3.66m) x 12'0" (3.66m)

OPEN PLAN KITCHEN/DINING ROOM

24'4" (7.42m) x 12'0" (3.66m)

LANDING

BEDROOM 1

15'0" (4.57m) x 15'0" (4.57m)

BEDROOM 2

12'5" (3.78m) x 12'0" (3.66m)

BEDROOM 3

12'5" (3.78m) x 12'3" (3.73m)

SHOWER ROOM/WC

SEPARATE WC/LAUNDRY ROOM

OUTSIDE:

GARDENS FRONT & REAR

COUNCIL TAX:

Band "E"

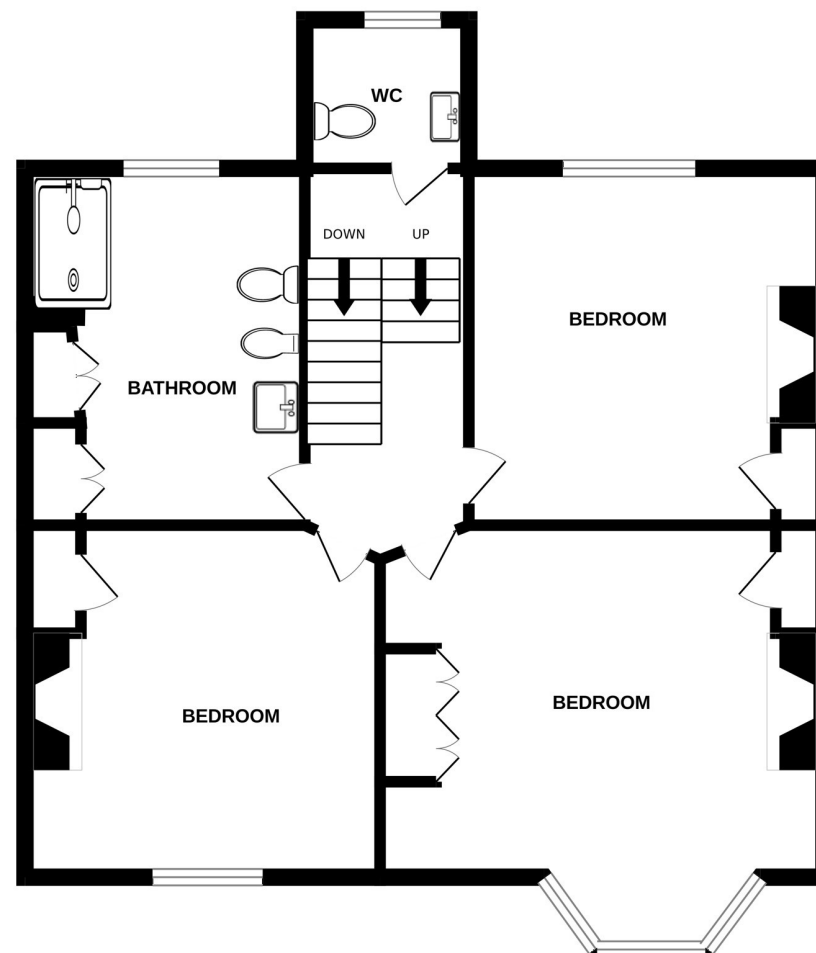
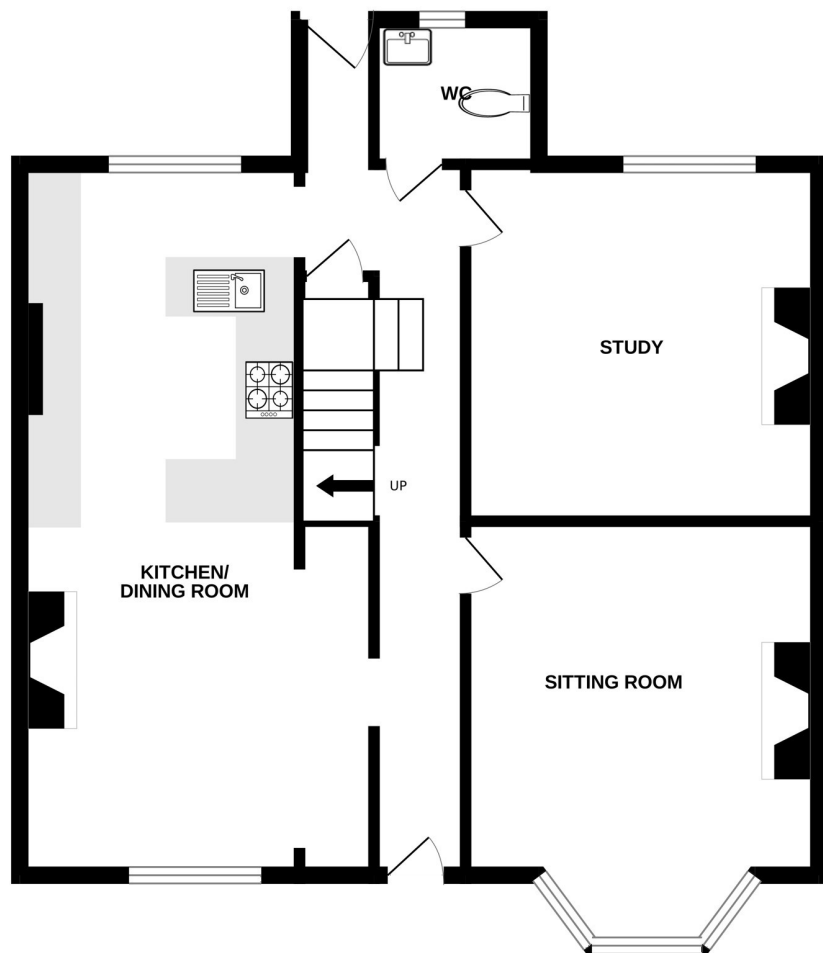
EPC:

"D"



GROUND FLOOR

1ST FLOOR



Ref: 1

Whilst every care has been taken in the preparation of these particulars, neither the agents nor the vendor accept any responsibility for error or omission, nor do they constitute an offer or contract. Please note we have not tested any apparatus, fixtures, fittings, or services. Interested parties must undertake their own investigation into the working order of these items. All measurements are approximate whilst photographs and floorplans are provided for guidance only.



5 Gildredge Road, Eastbourne BN21 4RB
01323 416716

28 Meads Street, Eastbourne BN20 7QY
01323 737962

website
www.leaperstanbrook.co.uk

email
sales@leaperstanbrook.co.uk