



www.kings-group.net

473 High Street
Tottenham N17 6QA
Tel: 020 8801 2696

Cannon Road, London, N17 8FE



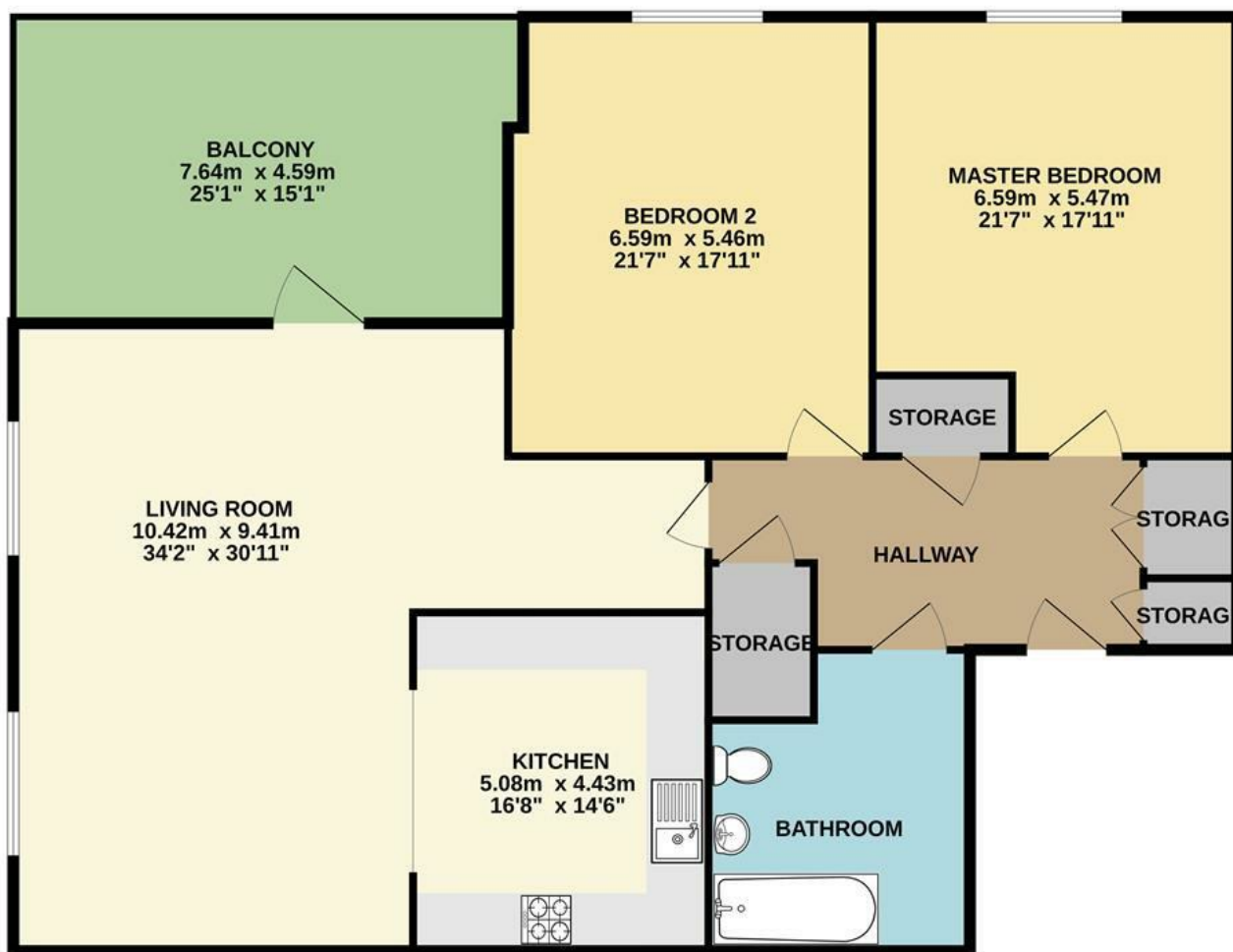
30% Shared ownership £99,000

Kings Group are delighted to present this beautiful two bedroom flat in a modern development boasting stunning views across London. The property is in immaculate condition throughout and benefits from a spacious light and airy living room with dining space and a modern fitted kitchen, south facing balcony, two double bedrooms, a three-piece family bathroom suite and ample storage space throughout. This would be an ideal opportunity for a first time buyer or an investor.

Situated in the heart of the regeneration, the property is minutes away from White Hart Lane Station with trains going to Seven Sisters Station (Victoria Line) then directly into Liverpool Street Station. Excellent bus routes connect Central London and the surrounding areas. The property is moments away from local schools, amenities and restaurants and there is further development with new shops being built alongside the new stadium. Proposals are in the pipeline for a new public square with new restaurants and shops creating new jobs and growth within the local area.



13TH FLOOR
73.0 sq.m. (786 sq.ft.) approx.



13TH FLOOR FLAT

TOTAL FLOOR AREA : 73.0 sq.m. (786 sq.ft.) approx.

Whilst every attempt has been made to ensure the accuracy of the floorplan contained here, measurements of doors, windows, rooms and any other items are approximate and no responsibility is taken for any error, omission or mis-statement. This plan is for illustrative purposes only and should be used as such by any prospective purchaser. The services, systems and appliances shown have not been tested and no guarantee as to their operability or efficiency can be given.
Made with Metropix ©2024



Energy Efficiency Rating		
	Current	Potential
Very energy efficient - lower running costs		
(92 plus) A		
(81-91) B		
(69-80) C		
(55-68) D		
(39-54) E		
(21-38) F		
(1-20) G		
Not energy efficient - higher running costs		
England & Wales	EU Directive 2002/91/EC	

Environmental Impact (CO ₂) Rating		
	Current	Potential
Very environmentally friendly - lower CO ₂ emissions		
(92 plus) A		
(81-91) B		
(69-80) C		
(55-68) D		
(39-54) E		
(21-38) F		
(1-20) G		
Not environmentally friendly - higher CO ₂ emissions		
England & Wales	EU Directive 2002/91/EC	

