



**29 Armadale Close,
Tottenham**

£500,000 Leasehold



29 Armadale Close, Tottenham

473 High Street, Tottenham, London,
N17 6QA

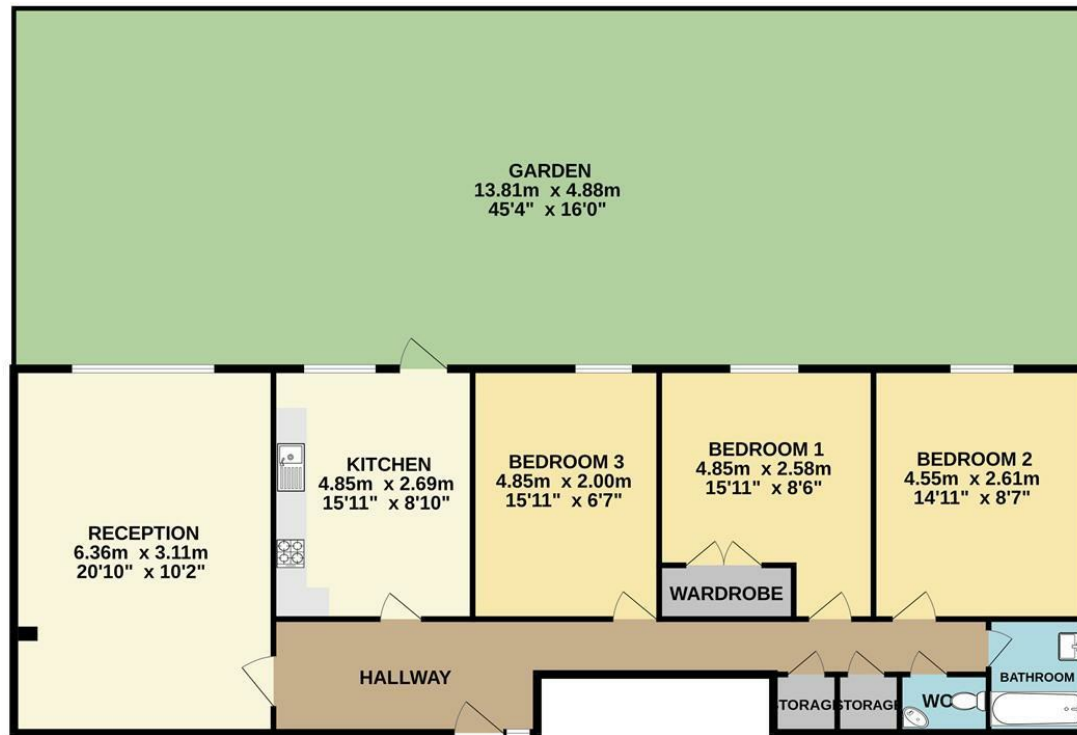
020 8801 2696
www.kings-group.net

- Three Bedroom Maisonette
- Ground Floor
- Private Rear Garden
- Larger Than Average
- Immaculate Condition
- Double Bedrooms
- Storage Space Throughout
- Excellent Location
- 0.5 Miles To Tottenham Hale Station
- EPC Rating : C

Kings Group are pleased to present this unique three bedroom ground floor maisonette minutes away from Tottenham Hale Station boasting a private rear garden. The property is in immaculate condition throughout and benefits from a three double bedroom, spacious light and airy reception room, modern fitted kitchen leading to a private rear garden and two piece family bathroom suite with separate w/c. The property further benefits from storage space throughout. This would be a great opportunity for first time buyers or an investor.

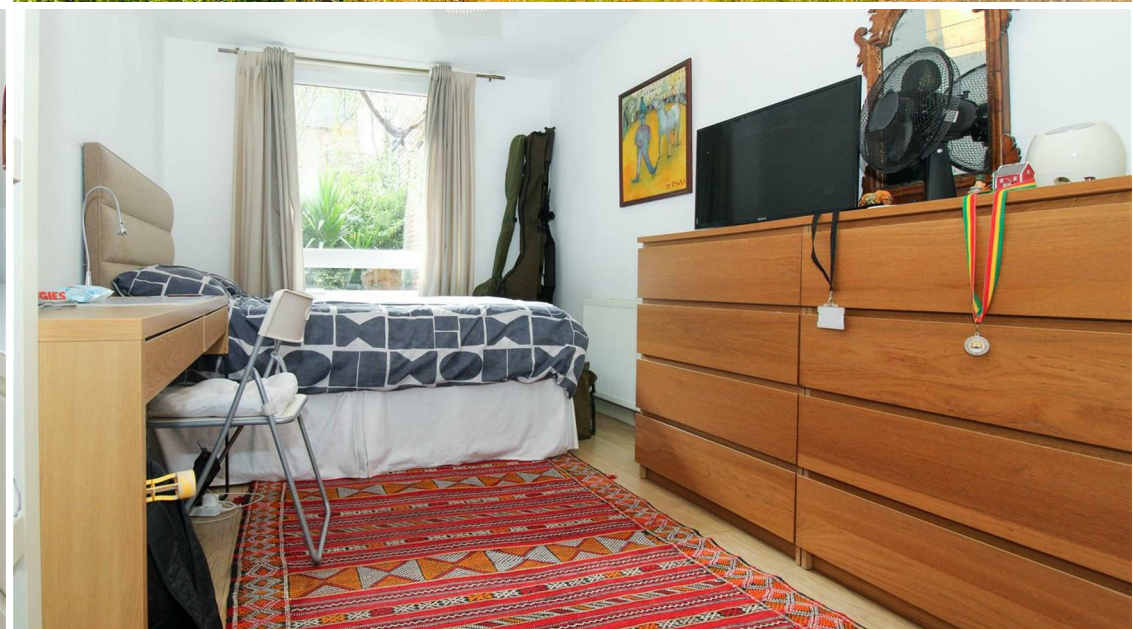
Tottenham Hale Train and Bus Station is situated 0.5 miles away providing easy access into Liverpool Street, Central London and surrounding areas. The station is well connected with further direct access to Stratford and Stansted via Stansted Express. Tottenham Retail park is only moments away with plenty of shops, restaurants and convenience stores. The development is within a thriving community with cycling, walking and jogging routes along the River Lea and the proposal of Crossrail 2 and new homes coming into the area.

GROUND FLOOR



Whilst every attempt has been made to ensure the accuracy of the floorplan contained here, measurements of doors, windows, rooms and any other items are approximate and no responsibility is taken for any error, omission or mis-statement. This plan is for illustrative purposes only and should be used as such by any prospective purchaser. The services, systems and appliances shown have not been tested and no guarantee as to their operability or efficiency can be given.
Made with Metropix ©2024

THE PROPERTY MISDESCRIPTIONS ACT 1991. The agent has not tested any apparatus, equipment, fixtures or services and so cannot verify that they are in working order, or fit for the purpose. References to the Tenure of a property are based on information supplied by the vendor. The agent has not had sight of the Title documents. A buyer is advised to obtain verification from their Solicitor or Surveyor



473 High Street, Tottenham, London,
N17 6QA

020 8801 2696

www.kings-group.net



Zoopla.co.uk



rightmove.co.uk
The UK's number one property website

