

Holcombe Road, London, N17 9AB



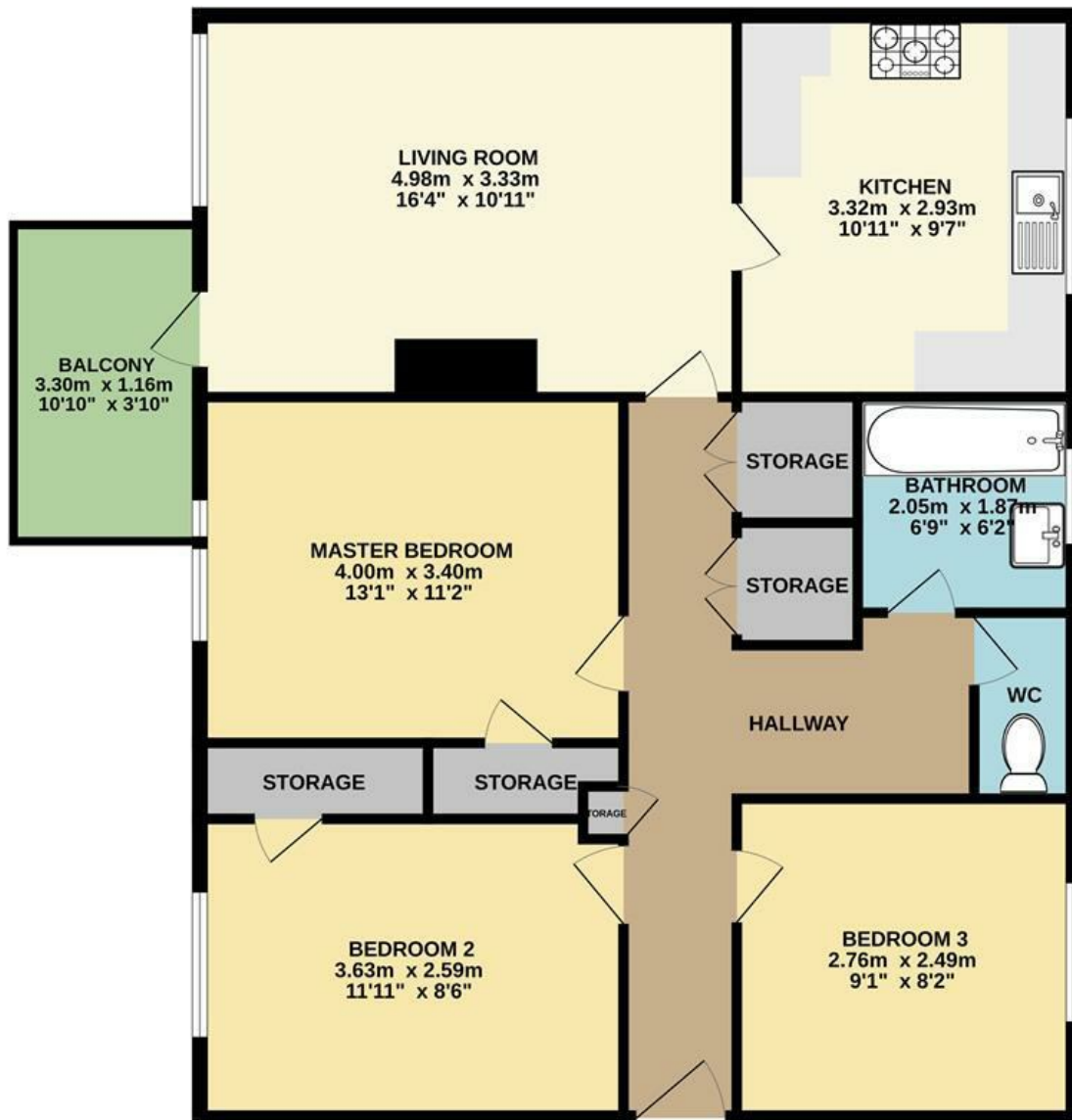
£390,000

Kings Group are pleased to present this three bedroom second floor flat located in a quiet street minutes away from Tottenham Hale Station. The property is well maintained throughout and benefits from plenty of storage space. The property benefits from one large spacious reception room leading to a private balcony, fitted kitchen, three double bedrooms and a two piece family bathroom suite with separate W/C. This property has great potential to become a family home or investment opportunity.

Situated minutes away from Tottenham Hale Train and Bus Station, the excellent transport links provides easy access into Central London and the surrounding areas. Tottenham Hale connects local residents to Stratford and Liverpool, with the fast train taking only 15 minutes (Overground), Stansted Airport (Stansted Express) and Central London (Victoria Line). Tottenham Retail Park is moments away with plenty of shops, restaurants and convenience stores. Regeneration is currently taking place in the area with the station and stadium under refurbishment and the proposed Crossrail 2 project passing through the station.



TOP FLOOR



Whilst every attempt has been made to ensure the accuracy of the floorplan contained here, measurements of doors, windows, rooms and any other items are approximate and no responsibility is taken for any error, omission or mis-statement. This plan is for illustrative purposes only and should be used as such by any prospective purchaser. The services, systems and appliances shown have not been tested and no guarantee as to their operability or efficiency can be given.
Made with Metropix ©2024

Energy Efficiency Rating

	Current	Potential
<i>Very energy efficient - lower running costs</i>		
(92 plus) A		
(81-91) B		
(69-80) C		
(55-68) D		
(39-54) E		
(21-38) F		
(1-20) G		
<i>Not energy efficient - higher running costs</i>		
England & Wales	EU Directive 2002/91/EC	

Environmental Impact (CO₂) Rating

	Current	Potential
<i>Very environmentally friendly - lower CO₂ emissions</i>		
(92 plus) A		
(81-91) B		
(69-80) C		
(55-68) D		
(39-54) E		
(21-38) F		
(1-20) G		
<i>Not environmentally friendly - higher CO₂ emissions</i>		
England & Wales	EU Directive 2002/91/EC	



Associated Offices in London, Essex and Hertfordshire

Kings Head Office Tudor Lodge, Burton Lane, Goffs Oak, Hertfordshire EN7 6SY Tel: 01707-872000

