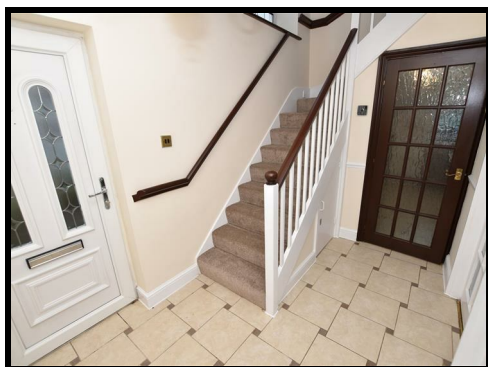


COUNTRYSIDE

ESTATES



1 Takely Ride, Basildon, SS16 5BE

£1,700 PCM

Offered TO LET is this three bedroom end of terrace house in Basildon situated close to the town centre, train station, hospital and local college. Offering a spacious lounge, downstairs WC, utility area, kitchen, three generous size bedrooms, shower room, off street parking and rear garden!

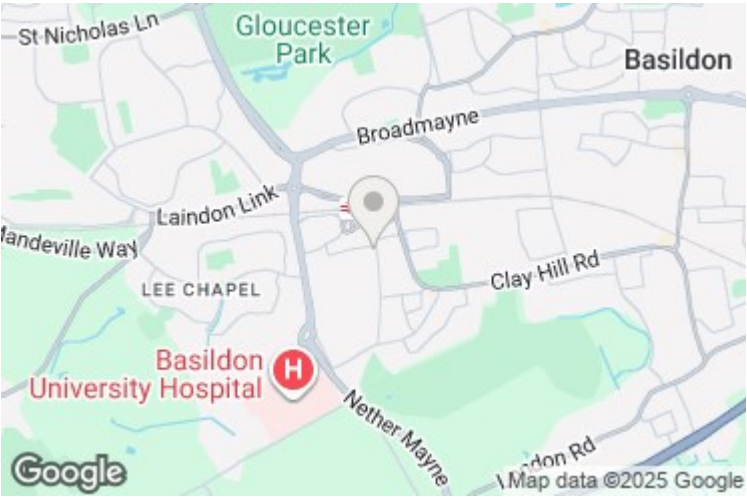
1 Takely Ride, Basildon, SS16 5BE

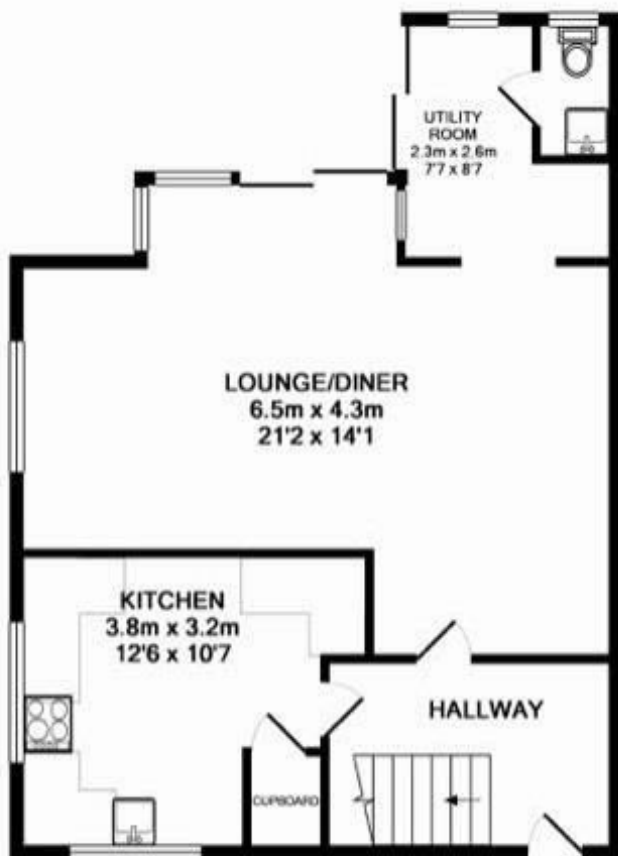
Located close to the town centre, Basildon train station, hospital and college /

- Lounge - 21'5" x 13'11" max /
- Kitchen - 10'8" x 10'2" /
- Bedroom 1 - 12'1" x 9'11" /
- Bedroom 2 - 10'11" x 9'3" /
- Bedroom 3 - 9'1" x 8'6" reducing to 6'2" /
- Bathroom - 7'11 x 7'10" /
- Off Street Parking /
- Rear Garden /

EPC Band E / Council Tax Band C / Available Immediately /

Energy Efficiency Rating			Environmental Impact (CO ₂) Rating		
	Current	Potential		Current	Potential
Very energy efficient - lower running costs			Very environmentally friendly - lower CO2 emissions		
(92 plus) A			(92 plus) A		
(81-91) B			(81-91) B		
(69-80) C			(69-80) C		
(55-68) D			(55-68) D		
(39-54) E			(39-54) E		
(21-38) F			(21-38) F		
(1-20) G			(1-20) G		
Not energy efficient - higher running costs			Not environmentally friendly - higher CO2 emissions		
England & Wales			England & Wales		
EU Directive 2002/91/EC			EU Directive 2002/91/EC		





GROUND FLOOR
APPROX. FLOOR
AREA 49.6 SQ.M.
(534 SQ.FT.)



1ST FLOOR
APPROX. FLOOR
AREA 41.0 SQ.M.
(442 SQ.FT.)

TOTAL APPROX. FLOOR AREA 90.6 SQ.M. (975 SQ.FT.)

KeyHPS Floor Plans are produced and provided for illustration purposes only. Whilst every attempt has been made to ensure the plan is accurate and presents the property in the best way, measurements of doors, windows and rooms are approximate and no responsibility is taken for any error, omission or mis-statement. To find out more about KeyHPS please visit www.keyhps.com.
(Tel: 0845 475 4161)
Made with Metropix 10/2009

205 High Road, Benfleet, SS7 5HY | 01268 755555 | sales@countrysideestates.co.uk | www.countrysideestates.co.uk

naea | propertymark
PROTECTED

rightmove

ZOOPLA

OnTheMarket

The Property
Ombudsman

COUNTRYSIDE ESTATES (SALES) LTD | COMPANY No.: 11867260 (England)
REGISTERED ADDRESS: Matrix House 12-16 Lionel Road, Canvey Island, England, SS8 9DE | VAT No.: 332342143