



COUNTRYSIDE ESTATES

205 HIGH ROAD • BENFLEET • ESSEX • SS7 5HY

TEL: 01268 755555 EMAIL: benfleet@countrysideestates.co.uk

www.countrysideestates.co.uk



Oak Villa, Elm Road, Bowers Gifford, Basildon, SS13 2LY

Guide Price £925,000 Freehold

GUIDE PRICE £925,000 - £950,000. OCCUPYING A PLOT APPROX 0.8 OF AN ACRE IN THIS SEMI - RURAL LOCATION, a superb five bedroom home offering substantial accommodation including three receptions, luxury kitchen/diner plus utility room and shower room to the ground floor, and five bedrooms with en - suite to master and luxury main bathroom to the 1st.

Externally the property has three secure outbuildings, large games room, detached hot tub and utility room, detached double garage and single garage plus extensive parking facilities to both the front and large side driveway leading to games room/ garage.

We must empathize this is a beautiful family home with both the A.13 & A127 within minutes drive and viewing is highly recommended.

Oak Villa, Elm Road, Bowers Gifford, Basildon, SS13 2LY

Entrance Hall 15'5 x 12'4 inc 13'9 (4.70m x 3.76m inc 4.19m) Study 11 x 7'2 (3.35m x 2.18m)



Door leading to impressive entrance hall, stairs to first floor with glass balustrade, radiator with cover plus further radiator, attractive sparkle granite effect flooring, built in cupboard, coved and skimmed ceiling with inset lights.

Window to front and flank, range of fitted office furniture, radiator, coved ceiling, wooden flooring.

Luxury Shower Room 8'8 x 7 (2.64m x 2.13m)

Lounge 22'8 x 13'6 (6.91m x 4.11m)



A lovely double aspect room with Bay window to front, French doors to rear, and two feature arch windows to side, feature floor to ceiling brick fireplace with log burner, skimmed ceiling with inset lights, two radiators, door to hall and kitchen.

Window to flank, attractive fully tiled walls, modern white suite comprising of large double walk in shower with hand held and overhead shower, glass screen, close coupled wc with concealed cistern and wall mounted push button control, vanity wash hand basin with mixer tap and cupboards under, chrome towel radiator, tiled floor.

Sitting Room 16'5 x 12'7 (5.00m x 3.84m)



Window to front and flank, radiator, coved and skimmed ceiling with inset lights.

Oak Villa, Elm Road, Bowers Gifford, Basildon, SS13 2LY

Utility Room 8'9 x 6 (2.67m x 1.83m)



Window to flank, coved and skimmed ceiling, inset single drainer sink unit with mixer tap and cupboards under, modern base and wall cupboards, wall mounted gas boiler, radiator with cover, drawer pack unit, fitted worktops, flooring matching hallway.

Luxury Kitchen/Dining Room 24'4 x 16 red 12'9 (7.42m x 4.88m red 3.89m)



Two windows and stable door to rear, window to flank, range of white gloss base and wall cupboards, Range oven with 7 gas burners and three electric ovens, glass and stainless steel canopy above, range of attractive granite sparkle effect worktops, inset sink unit with mixer tap, integrated fridge, microwave and dishwasher, radiator, tiled splashbacks, sparkle granite effect tiled flooring.



Part Galleried Landing

coved and skimmed ceiling, linen cupboard, radiator, power point.

Oak Villa, Elm Road, Bowers Gifford, Basildon, SS13 2LY

Bedroom One 20'7 x 11 inc en-suite (6.27m x 3.35m inc en-suite)



Window to front and rear, three double built in wardrobes, radiator, wooden flooring, coved ceiling.

En - Suite Shower Room



Modern white suite comprising of shower cubicle, vanity wash hand basin with mixer tap and cupboards under, close coupled wc with concealed cistern and push button control, wooden flooring, coved ceiling.

Bedroom Two 14 x 14 max (4.27m x 4.27m max)



Window to front, double built in wardrobe, radiator, skimmed ceiling, walk in cupboard with shelving and lighting.

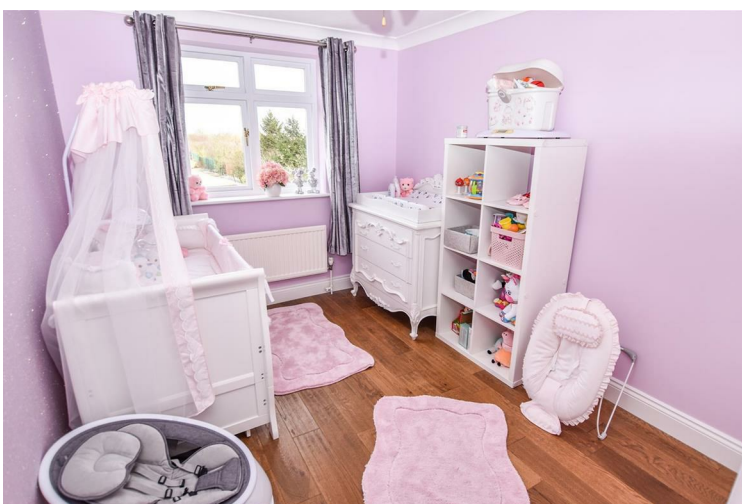


Bedroom Three 12'10 x 10 (3.91m x 3.05m)



Window to rear, wooden flooring, radiator, coved ceiling, double built in wardrobe.

Bedroom Four 12'6 x 8'7 (3.81m x 2.62m)



Window to rear, wooden flooring, radiator, double built in wardrobe, coved ceiling.

Oak Villa, Elm Road, Bowers Gifford, Basildon, SS13 2LY

Bedroom Five 12 x 7'8 (3.66m x 2.34m)



Window to flank, radiator, coved ceiling, double built in wardrobe.

Luxury Bathroom 9'4 x 7 (2.84m x 2.13m)



Window to flank, white suite comprising of Panelled bath with mixer tap shower, vanity wash hand basin with mixer tap and cupboards under, close coupled wc with concealed cistern and push button control, fully tiled walls, chrome towel radiator, granite effect sparkle tiled flooring.

Rear Garden



Impressive large Italian porcelain tiled patio, extensive lawn area further area to rear of outbuildings and large natural lake, external lighting and water supply.



Oak Villa, Elm Road, Bowers Gifford, Basildon, SS13 2LY



Hot tub Room 24'4 x 11'10 (7.42m x 3.61m)



Brick and light wood upvc construction tiled flooring, hot tub/swim tub, electric heater, bi - fold doors



Games Room 33 x 13'7 (10.06m x 4.14m)



Brick built, range of kitchen units and oven and hob, shower room with shower cubicle , close coupled wc and vanity wash hand basin, electric heating, window and door to front and window to rear



Detached utility room 13'6 x 6 (4.11m x 1.83m)

Tiled flooring, French upvc doors, light and power, plumbed for washing machine, electric heater, light and power.

Oak Villa, Elm Road, Bowers Gifford, Basildon, SS13 2LY

Outbuilding 1 28'6 x 26 (8.69m x 7.92m)



Electric Roller Door

Outbuilding Two 26'7 x 15 (8.10m x 4.57m)

Electric Roller Door.

Outbuilding Three 28 x 28 (8.53m x 8.53m)

Electric Roller Door.

Detached Double Garage 19 x 18'9 (5.79m x 5.72m)

Detached brick built with pitched roof, electric roller door, light and power, side door, external floodlight.

Front Garden/Driveway



Extensive parking area with large cobbled effect block paving, feature brick boundary wall and electric remote controlled sliding gate, large side driveway with wrought iron gates leading to further garage .

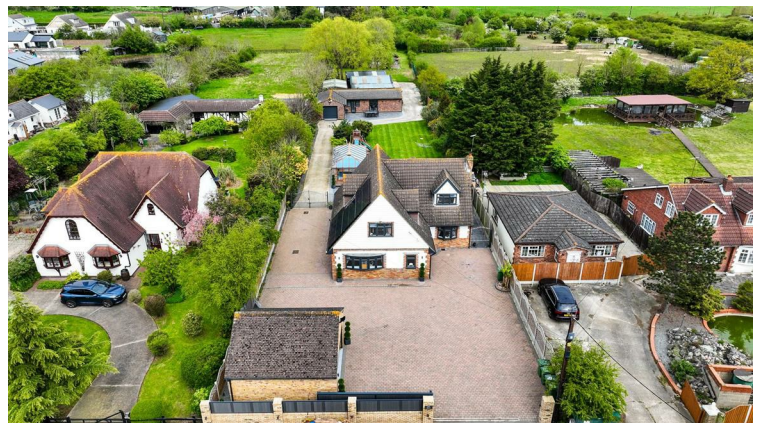
Second Garage 28'3 x 13'5 (8.61m x 4.09m)

Adjoining the games room with electric roller door, light and power.

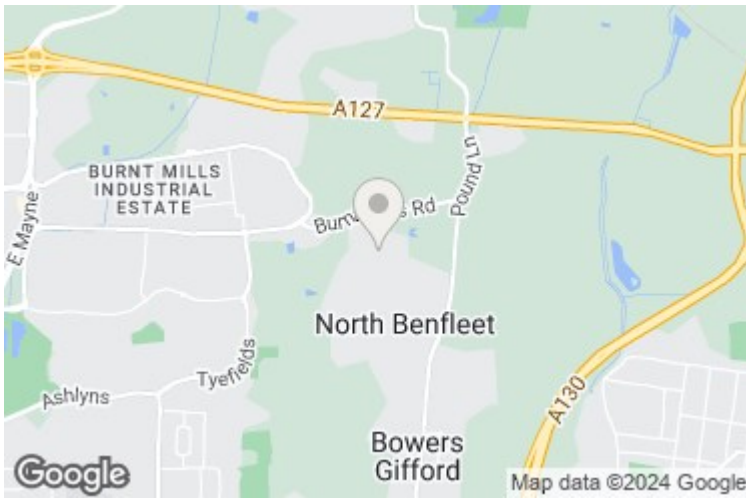
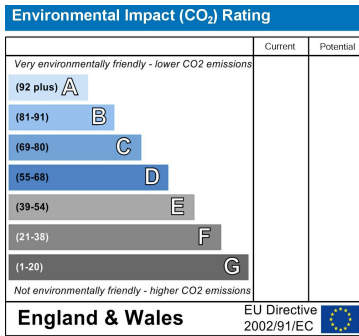
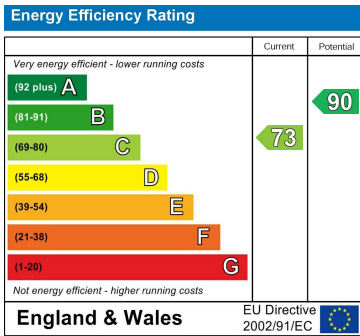
Plot Size approx 0.8 of an acre

Council Tax Band G

Aerial Photos



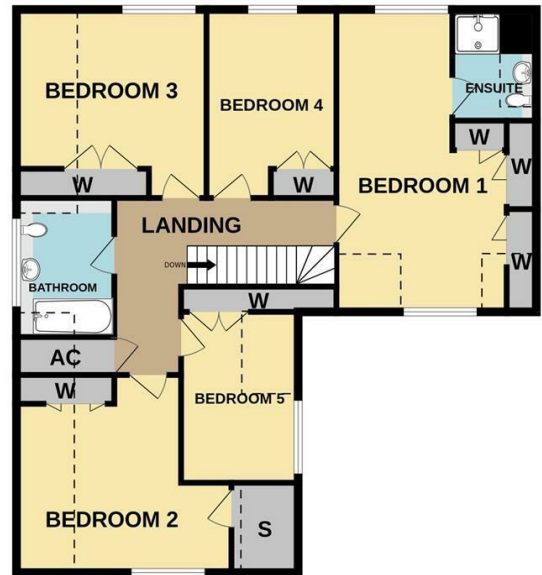
Oak Villa, Elm Road, Bowers Gifford, Basildon, SS13 2LY



Ground Floor
1203 sq ft (111.7 sq m.) approx.



1st Floor
1047 sq ft (97.3 sq m.) approx.



These particulars do not constitute any part of an offer or contract. Accordingly their accuracy is not guaranteed. Any prospective purchaser or lessee should satisfy themselves to the correctness of statements or information in these particulars.