

Berkeley Tower, 48 Westferry Circus

£3,250 pcm

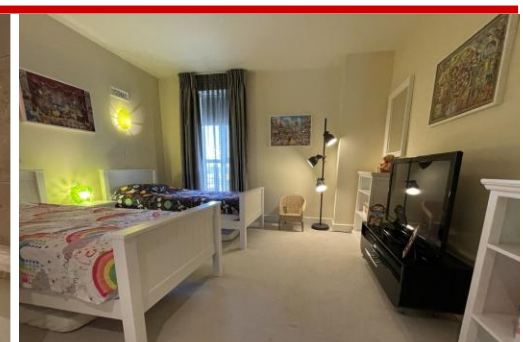
Panoramic views of the City of London from the juliette balcony & bay window of the apartments good sized reception room. The dinning area leads off the fully integrated kitchen. Master bedroom has an en-suite bathroom and good integral wardrobe space. Entrance leads to the hallways and reception room which are all finished in oak flooring.

- Contemporary furnishings
- Two Allocated Secured Car Park spaces
- Concierge
- 24 hours security
- Gated development



Property Key points

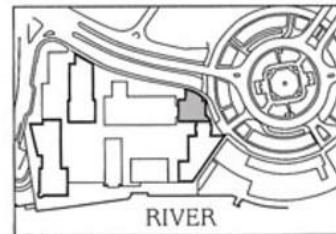
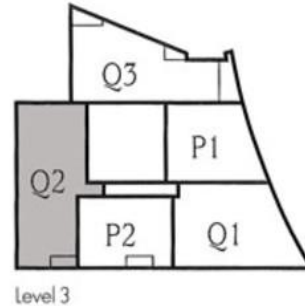
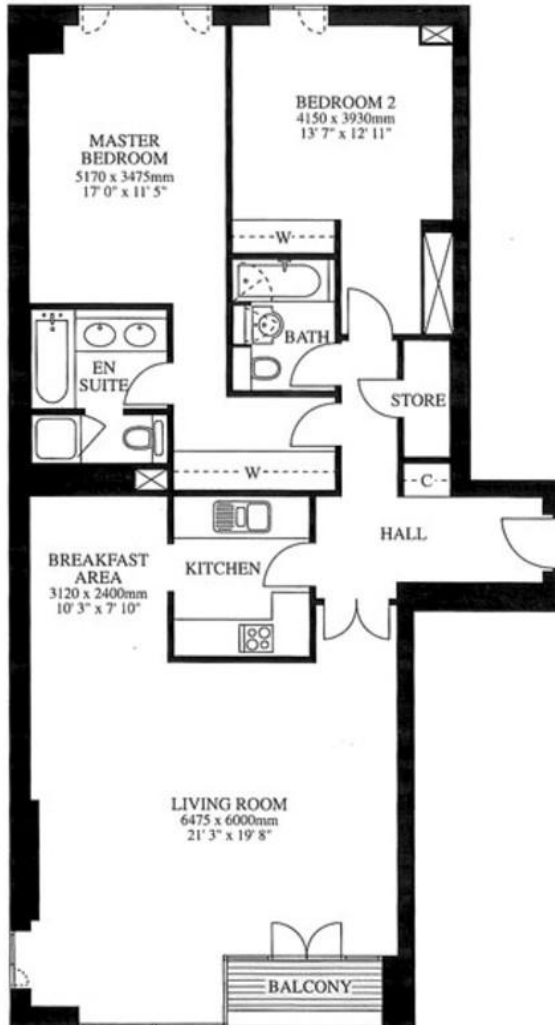
- Two allocated car park spaces
- Contemporary Styled Furnishing
- Oak Wood flooring to reception room and Hallways
- Multi Secured entrance door
- Colonnade and Cabot square nearby
- Shopping center at Cabot square
- Cafe and Dry cleaners on site
- Virgin Active on site
- Canary Riverside Plaza Hotel on site
- Communal gardens
- Secured/Gated development
- Close to Uber clipper Thames River terminal
- Westferry DLR station close by
- Integrated Kitchen
- Including Integrated Neff Microwave
- Smeg Oven and Hob and Extractor
- Integrated Washer/Dryer
- Integrated Fridge/Freezer
- Downlights and Uplighting
- Integral Wardrobe space to both bedrooms
- Two bathrooms one En suite
- Amazing London City views
- Juliette Balcony and Bay Window
- Dining area
- Available on a long term let
- Concierge and 24 hour security
- **Must be seen**





BERKELEY TOWER

48 Westferry Circus, Canary Wharf, London E14



2 Bedroom apartment Type Q2

Level

3rd floor

Total floor area
130.2 sq m / 1,402 sq ft

Balcony area
2.9 sq m / 31 sq ft

655 Commercial Road, London, E14 7LW

Disclaimer

River Habitat, their clients and any joint agents give notice that: 1. They have no authority to make or give any representations or warranties in relation to the property. These particulars do not form any part of an offer or contract and must not be relied upon as statements or representations of fact. 2. Any areas, measurements or distances are approximate. The text, photographs and plans are for guidance only and are not necessarily a complete representation of the property. Photographs are taken using a wide angle lens camera. 3. It should not be assumed that the property has all necessary planning, building regulations or other consents and River Habitat have not tested any services, equipment or other facilities. Purchasers must satisfy themselves by inspection or otherwise