

T₂m

Flat H 50 Maytree Court

£225,000



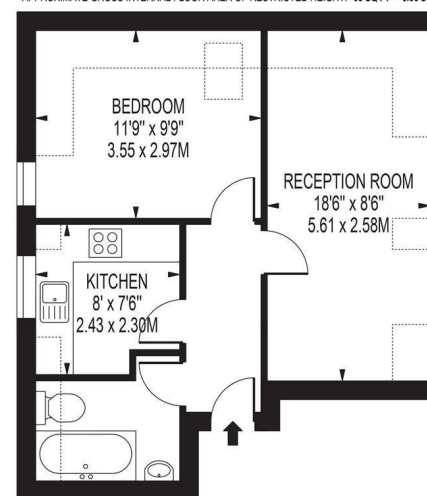
Contact
02086400146
admin@time2move.com
www.time2move.com

Local Authority
Merton Council

Council Tax Band B

EPC Rating C

MAYTREE COURT
APPROXIMATE TOTAL INTERNAL FLOOR AREA: 426 SQ FT - 39.61 SQ M
(INCLUDING RESTRICTED HEIGHT AREA)
APPROXIMATE GROSS INTERNAL FLOOR AREA OF RESTRICTED HEIGHT: 68 SQ FT - 6.36 SQ M



FOR ILLUSTRATION PURPOSES ONLY
THIS FLOOR PLAN SHOULD BE USED AS A GENERAL GUIDE ONLY AND DOES NOT CONSTITUTE AN OFFER OR CONTRACT.
ANY INTENDING PURCHASER OR LESSEE SHOULD OBTAIN THE PROPERTY BY INSPECTION. MEASUREMENTS AND DIMENSIONS ARE FOR INFORMATION ONLY AND SHOULD NOT BE USED TO VALUE A PROPERTY OR BE THE BASIS OF ANY SALE OR LET.
ANY AREAS, MEASUREMENTS OR DISTANCES QUOTED ARE APPROXIMATE AND SHOULD NOT BE USED TO VALUE A PROPERTY OR BE THE BASIS OF ANY SALE OR LET.