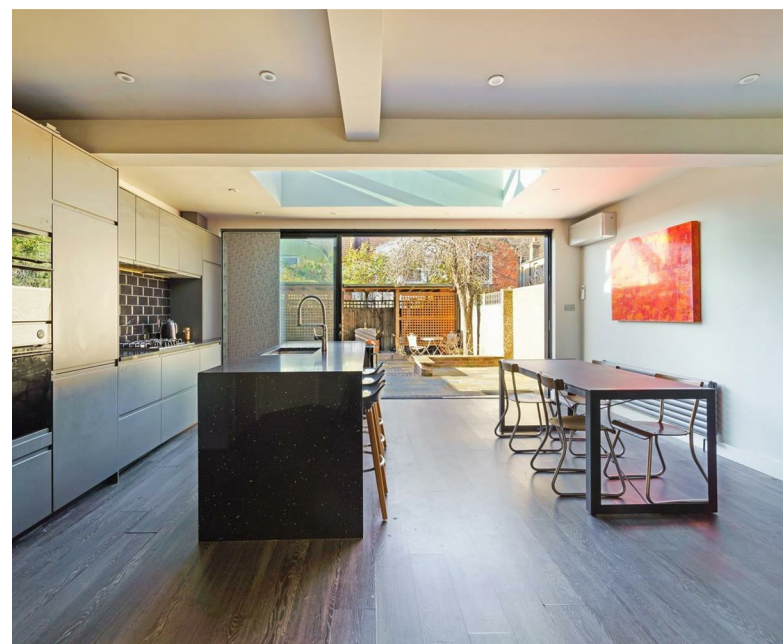
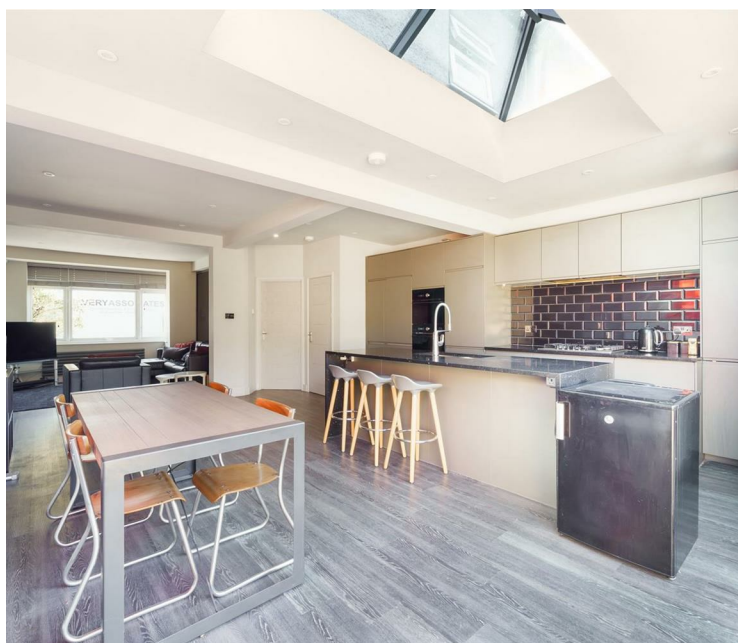




Thirsk Road, Mitcham CR4

£895,000 Freehold

- **Terrace Family Home**
- **Large reception room**
- **Fully Fitted Kitchen**
- **4 Bedrooms House**
- **High specification**
- **1410 sq ft**
- **Lovely Garden**
- **Close To Figges Marsh Park**
- **Close To Local Amenities**
- **Within walking distance to Tooting Station**

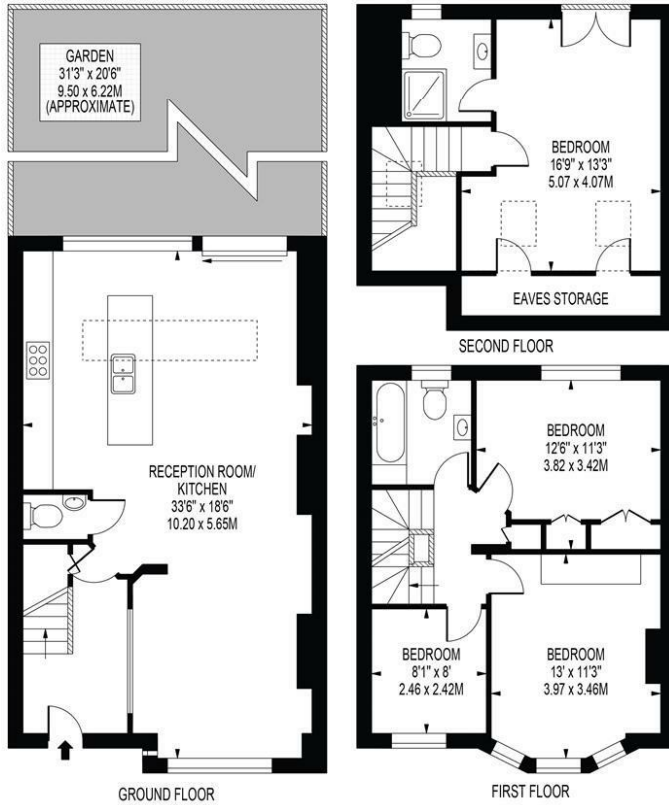


THIRSK ROAD

APPROXIMATE TOTAL INTERNAL FLOOR AREA: 1410 SQ FT - 130.98 SQ M

(INCLUDING EAVES STORAGE & RESTRICTED HEIGHT AREA)

APPROXIMATE GROSS INTERNAL FLOOR AREA OF EAVES STORAGE & RESTRICTED HEIGHT: 39 SQ FT - 3.62 SQ M



FOR ILLUSTRATION PURPOSES ONLY

THIS FLOOR PLAN SHOULD BE USED AS A GENERAL OUTLINE FOR GUIDANCE ONLY AND DOES NOT CONSTITUTE IN WHOLE OR IN PART AN OFFER OR CONTRACT. ANY INTENDING PURCHASER OR LESSEE SHOULD SATISFY THEMSELVES BY INSPECTION, SEARCHES, ENQUIRIES AND FULL SURVEY AS TO THE CORRECTNESS OF EACH STATEMENT. ANY AREAS, MEASUREMENTS OR DISTANCES QUOTED ARE APPROXIMATE AND SHOULD NOT BE USED TO VALUE A PROPERTY OR BE THE BASIS OF ANY SALE OR LET.

