

T₂m



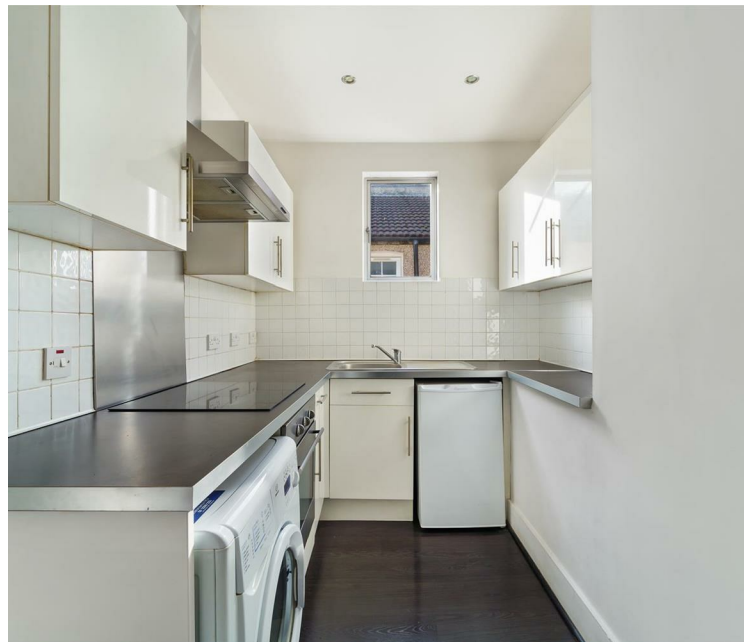
Tynemouth Road, Tooting Borders CR4

£450,000 Leasehold

- **Very Good Condition**
- **Three Bedroom Maisonette**
- **Open Plan Layout**
- **First Floor Flat**
- **Spacious back garden**
- **Close to amenities**
- **Excellent Transport Links**
- **Seconds away form Figges Marsh Park**
- **Leasehold**
- **Chain Free**

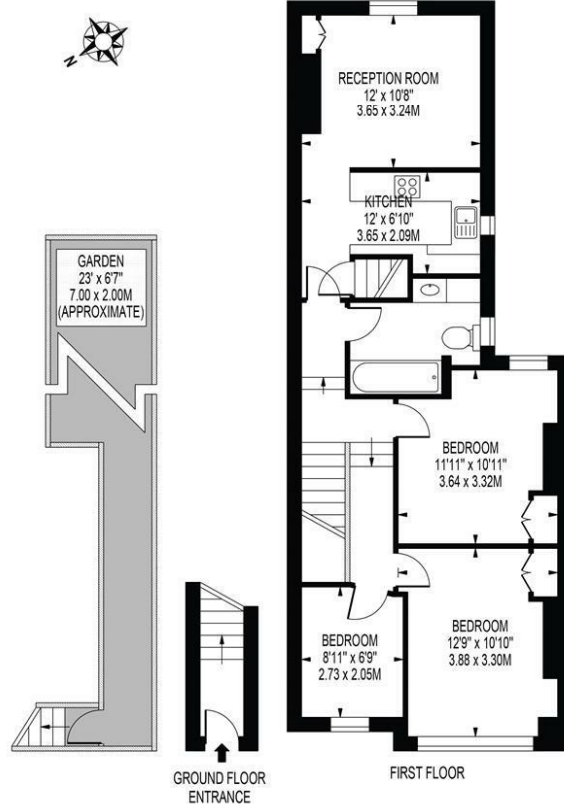
02086400146

admin@time2move.com



TYNEMOUTH AVENUE

APPROXIMATE GROSS INTERNAL FLOOR AREA: 746 SQ FT - 69.27 SQ M



FOR ILLUSTRATION PURPOSES ONLY

THIS FLOOR PLAN SHOULD BE USED AS A GENERAL OUTLINE FOR GUIDANCE ONLY AND DOES NOT CONSTITUTE IN WHOLE OR IN PART AN OFFER OR CONTRACT. ANY INTENDING PURCHASER OR LESSEE SHOULD SATISFY THEMSELVES BY INSPECTION, SEARCHES, ENQUIRIES AND FULL SURVEYS AS TO THE CORRECTNESS OF EACH STATEMENT. ANY AREAS, MEASUREMENTS OR DISTANCES QUOTED ARE APPROXIMATE AND SHOULD NOT BE USED TO VALUE A PROPERTY OR BE THE BASIS OF ANY SALE OR LET.

