



St. Wilfrids View

Brayton, YO8 9GQ

Offers In The Region Of £235,000



An ideal home for first-time buyers, the exclusive Palmerston design offers an open-plan kitchen with dining area and French doors leading to the rear garden, allowing the outside and inside to flow seamlessly.

Plentiful storage.

Inner hallway

Ground floor cloaks and W.C.



Further property information

Spacious and comfortable lounge.

Stairs to the first floor

3 bedrooms.

Stunning house bathroom with large storage cupboard.

Off street parking at the front, the rear garden is mainly laid to lawn with open field views towards St Wilfrid's Church in Brayton.

Council Tax - Band C. North Yorkshire County Council

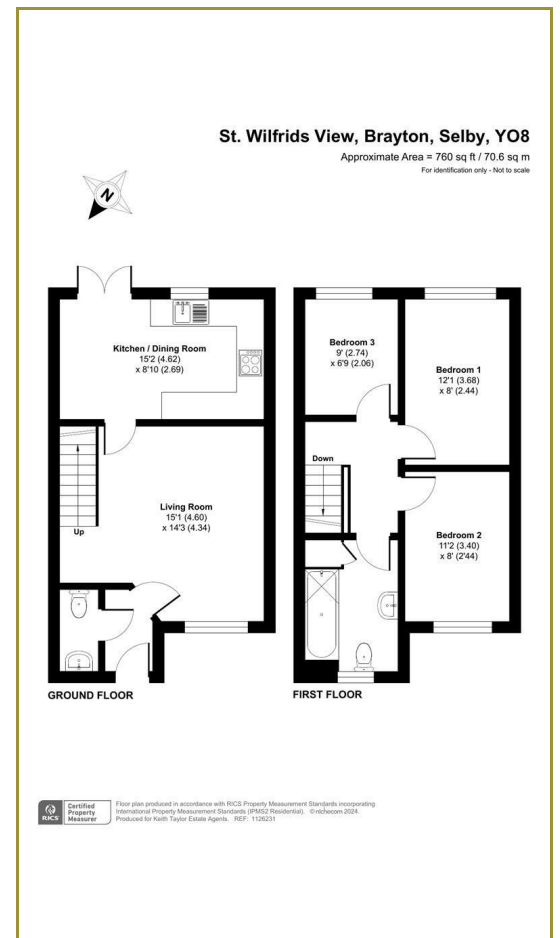
Services. Mains drainage, gas, water and electricity.

Tenure: Freehold

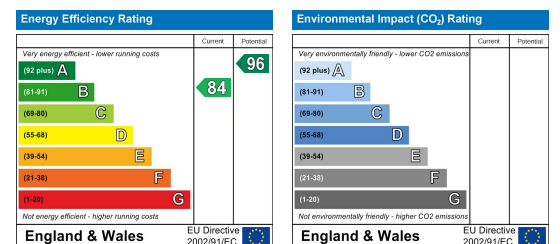
Area Map



Floor Plans



Energy Efficiency Graph



These particulars, whilst believed to be accurate are set out as a general outline only for guidance and do not constitute any part of an offer or contract. Intending purchasers should not rely on them as statements of representation of fact, but must satisfy themselves by inspection or otherwise as to their accuracy. No person in this firm's employment has the authority to make or give any representation or warranty in respect of the property.

Keith Taylor

56 Gowthorpe, Selby, North Yorkshire, YO8 4ET
Tel: 01757 709457 Email: sales@keithtaylorproperty.co.uk
www.keithtaylorproperties.co.uk