



Silver Street

Whitley, DN14 0JG

Offers Over £225,000



REDUCED - WAS - 'Offers in the region of £239,950 - NOW REDUCED TO 'Offers over £225,000'.

A most delightful and well presented Bovis Homes built, 3 bedroom / 2 bathroom semi-detached property with GARAGE on the edge of this popular village. ** NO UPPER CHAIN **

The property briefly comprises: entrance vestibule, ground floor cloaks and WC, lounge with downstairs storage space, and modern kitchen dinner with patio doors direct to the rear garden.

Stairs lead to the first floor: 3 bedrooms (master with en-suite shower room) and modern house bathroom with 'rainfall' shower over bath, WC and hand basin.

This is a lovely corner property with mature hedge boundary and gardens to 3 sides on this peaceful village street, which leads to some lovely dog walks, open fields and farmland.



FURTHER INFORMATION

Heating LPG GAS
 Council Tax Band C - North Yorkshire County Council (Selby)
 Tenure: Freehold
 Services: Mains drainage, water, electricity and LPG gas

Viewings: All viewings strictly by appointment only (current tenant in situ).

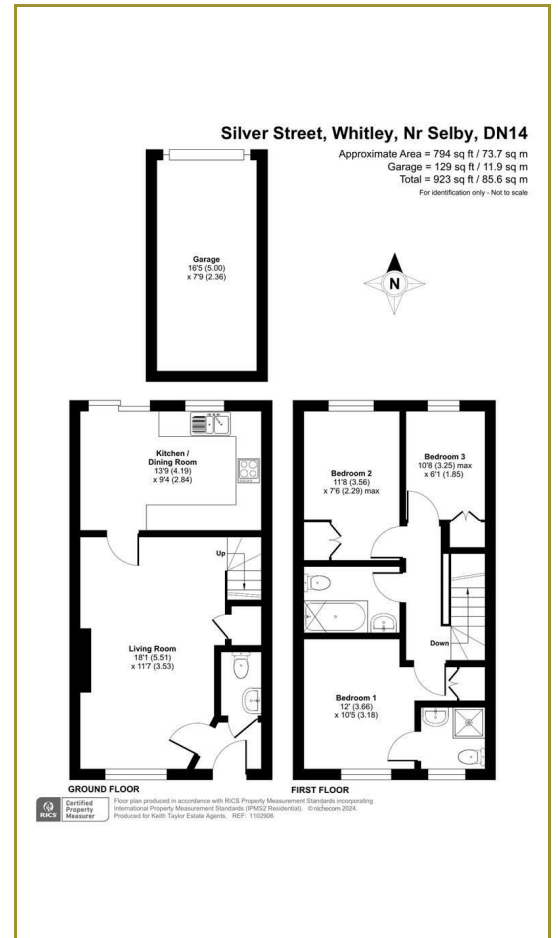
About Whitley (Bridge):

Whitley has a popular pub for drinks and lunches, and a primary school. The neighbouring village of Eggborough (accessed via a walkway) has a variety of local amenities including doctors' surgery, shops, pub and park, plus Snaith High School and Hensall junior school nearby. The nearest railway station is at Whitley Bridge (with trains to Leeds and Goole and the M62 J34) is a short drive away, as is the A19. Selby is c8 miles away.

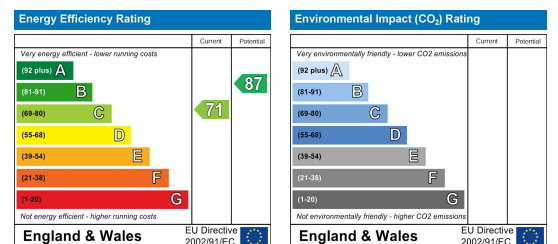
Area Map



Floor Plans



Energy Efficiency Graph



These particulars, whilst believed to be accurate are set out as a general outline only for guidance and do not constitute any part of an offer or contract. Intending purchasers should not rely on them as statements of representation of fact, but must satisfy themselves by inspection or otherwise as to their accuracy. No person in this firm's employment has the authority to make or give any representation or warranty in respect of the property.

Keith Taylor

56 Gowthorpe, Selby, North Yorkshire, YO8 4ET
 Tel: 01757 709457 Email: sales@keithtaylorproperty.co.uk
 www.keithtaylorproperties.co.uk