



## Beechfield Close

Thorpe Willoughby, YO8 9QJ

£169,500



A stunning refurbished 2 bedroom semi-detached bungalow with driveway, new fencing and turfed rear garden. \*\* CHAIN FREE \*\*

White gloss kitchen with integrated electric hob and oven, space for tall free-standing fridge freezer, plumbing for washing machine, and inner storage cupboard housing the gas combi boiler.

Lounge with large window to the front - a very light and airy room, master bedroom to the rear, second bedroom to the rear also, with patio doors direct to the sunny rear garden.

Brand new shower room with non-slip shower tray, new shower, new low level 'slow-close' WC in a vanity unit, and frosted window to the side.

The rear garden has been laid to lawn with brand new turf and fencing to 3 sides, plus a wooden shed with new felt roof - a good dry storage shed.



## Further property information

Double gates from the driveway.

The front garden is laid to lawn.

New windows throughout.

Gas central heating.

Services: Mains drainage, gas, electricity and water.

Tenure: Freehold

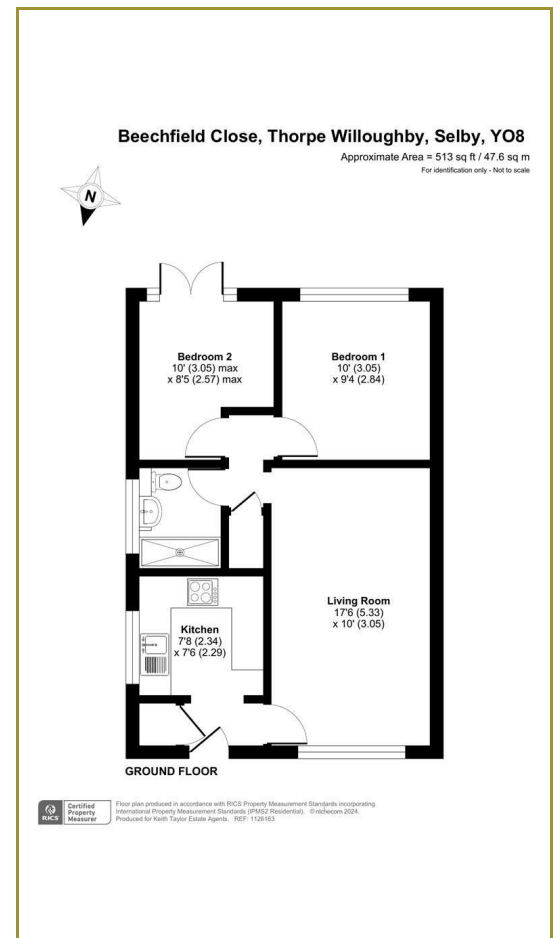
Council Tax Band - A

\*\* CHAIN FREE \*\*

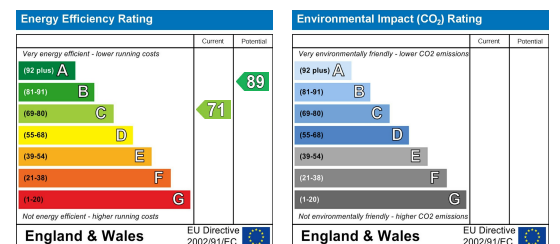
## Area Map



## Floor Plans



## Energy Efficiency Graph



These particulars, whilst believed to be accurate are set out as a general outline only for guidance and do not constitute any part of an offer or contract. Intending purchasers should not rely on them as statements of representation of fact, but must satisfy themselves by inspection or otherwise as to their accuracy. No person in this firm's employment has the authority to make or give any representation or warranty in respect of the property.

# Keith Taylor

56 Gowthorpe, Selby, North Yorkshire, YO8 4ET  
Tel: 01757 709457 Email: sales@keithtaylorproperty.co.uk  
www.keithtaylorproperties.co.uk