



CHURCH ROAD LONDON SW13
£1,950 PER MONTH AVAILABLE 15/12/2025

Hamptons
THE HOME EXPERTS

{ THE PARTICULARS

Church Road London SW13

£1,950 Per Month
Unfurnished

-  1 Bedroom
-  1 Bathroom
-  1 Reception

Features

- Double bedroom, - Bathroom with shower over the bath, - Reception room, - Eat in kitchen, - Central Barnes location, - Second floor, - Council Tax Band D

Council Tax

Council Tax Band D

Hamptons
252 Upper Richmond Road West
East Sheen, London, SW14 8AG
020 8618 4550
Eastsheenlettings@hamptons-int.com
www.hamptons.co.uk

{ COMPLETELY REFURBISHED ONE BEDROOM FLAT.

The Property

A completely refurbished second floor flat located in the heart of Barnes Village across the road from the Olympic Cinema.. There is a double bedroom, large reception room befitting from high ceilings and ample natural light, fully fitted separate kitchen and good sized bathroom.

Location

Barnes is one of London's true villages, bordered on three sides by the River, the High Street provides excellent foodie shops including a butcher, a fish monger, a cheese shop, an independent wine merchant and an M & S Food Hall. There is a choice of pubs and coffee shops and artisan bakers such as Gail's. The duck pond is a focus for the Common and there is a weekly Farmer's Market on Saturdays. Some excellent schools are close by both independent and state, such as St Pauls, the Harrodian, Ibstock Place and the Swedish school. The Wetlands provides a variety of attractions for adults and children alike and the tow path gives space to walk, run and cycle as does Barnes Common. Frequent transport links to the City exist from the railway stations at Barnes Bridge and Barnes and there are a variety of bus routes to either Putney Bridge Underground Station or to Hammersmith Bridge where there is pedestrian access to the Piccadilly, District, Hammersmith and City/Circle Underground lines.



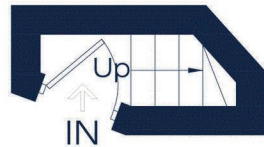
CHURCH ROAD

Approximate Gross Internal Area

First floor = 14 sq. ft. (1.3 sq. m.)

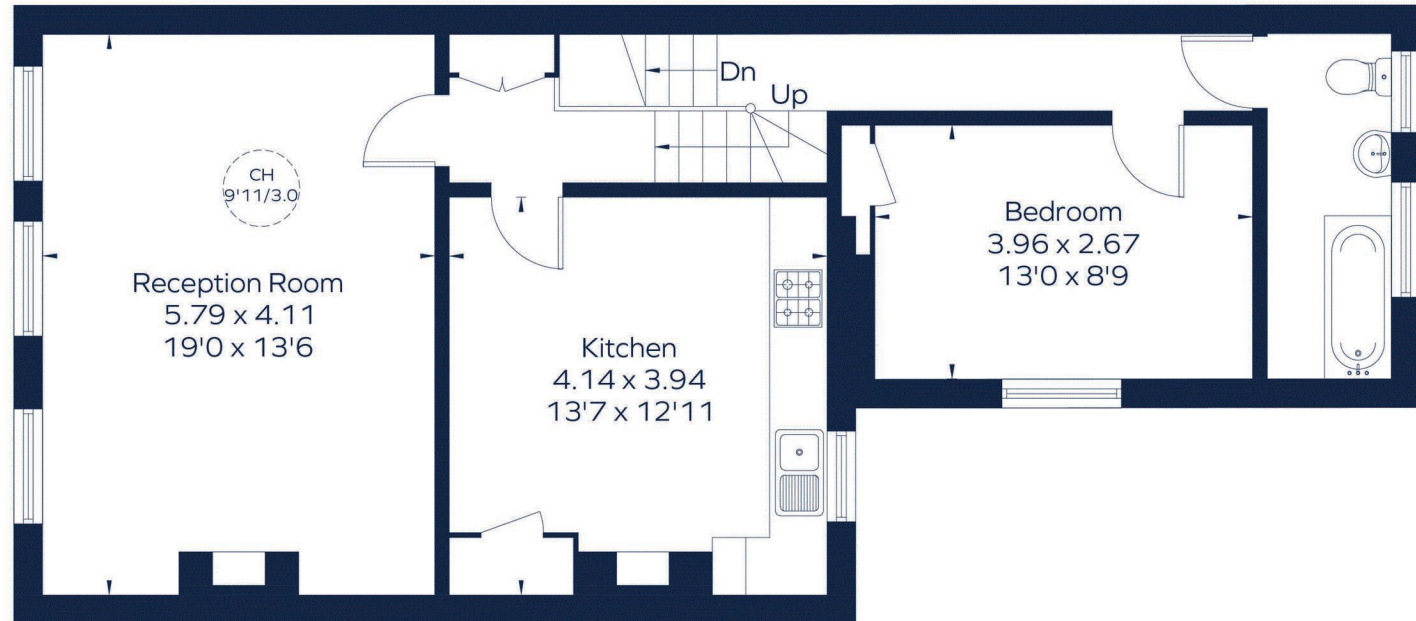
Second floor = 745 sq. ft. (69.2 sq. m.)

Total = 759 sq. ft. (70.5 sq. m.)



First Floor

CH
9'11/3.0 = Ceiling Height



Second Floor

This plan is for layout guidance only. Not drawn to scale unless stated. Windows and door openings are approximate. Whilst every care is taken in the preparation of this plan, please check all dimensions, shapes and compass bearings before making any decisions reliant upon them.
ID 1262582

For Clarification

We wish to inform prospective tenants that we have prepared these particulars as a general guide and they have been confirmed as accurate by the landlord. We have not verified permissions, nor carried out a survey, tested the services, appliances and specific fittings. Room sizes are approximate and measurement figures rounded: they are taken between internal wall surfaces and therefore include cupboards/shelves, etc. Accordingly, they should not be relied upon for

carpets and furnishings. It should also be noted that all fixtures and fittings, carpeted, curtains/blinds, kitchen equipment and garden statuary, whether fitted or not, are deemed removable by the landlord unless specifically itemised with these particulars. Please enquire in office or on our website for details on holding deposit and tenancy deposit figures.

Energy Efficiency Rating		
How energy efficient is your home?	Current	Potential
A		
B		
C		
D		
E		
F		
G		
Not energy efficient - higher running costs		
England & Wales	76	76
EU Directive 2002/91/EC		

