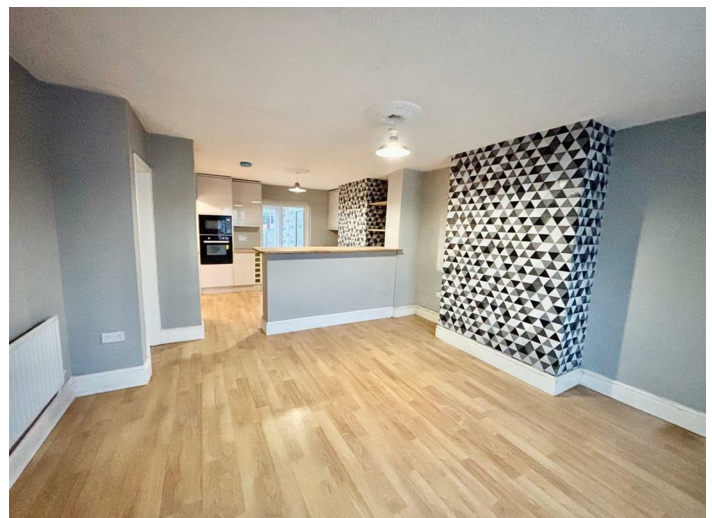
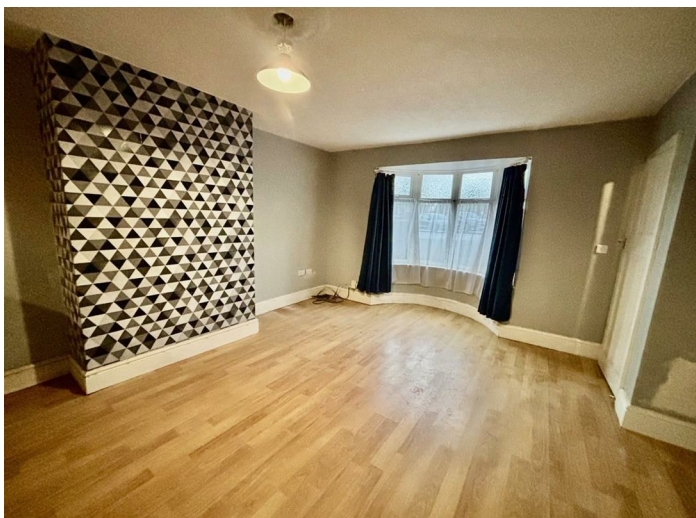


3 Bed House - Semi-Detached

£1,200 PCM

📍 Oak Crescent, Littleover, Derby, DE23 3BR



www.phillipsandco.co.uk | 01332 40 25 25

**Phillips
& Co**
EST. 2012
MY PAD GROUP

3 Bed House - Semi-Detached

£1,200

DCM

 Oak Crescent, Littleover, Derby, DE23 3BR

AVAILABLE IMMEDIATELY - UNFURNISHED - £253.84 HOLDING DEPOSIT REQUIRED - £1269.23 FULL DEPOSIT REQUIRED AT START OF TENANCY - SIZEABLE TRADITIONAL SEMI DETACHED HOME - CUL DE SAC POSITION IN POPULAR LOCATION - THREE BEDROOMS - TWO BATHROOMS - THREE RECEPTION ROOMS - OFF ROAD CAR PARKING - ESTABLISHED GARDENS - COUNCIL TAX BAND B - ENERGY RATING D.

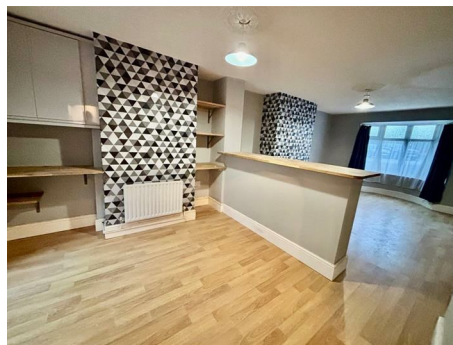
Reception Hall

Having composite and opaque double glazed entrance door and staircase to first floor.

Open Plan Lounge/Dining Area



Dining Kitchen 17'3" x 9'5" (5.28 x 2.88)



Having a range of handleless wall and base cupboards, inset four burner gas hob with electric fan assisted oven and grill, built in microwave, larder fridge and freezer.

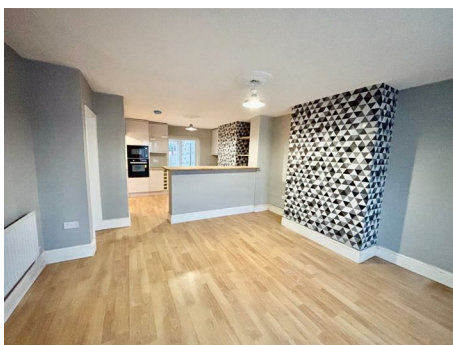
Dining/Family Room 13'4" x 8'4" (4.08 x 2.55)



Having a velux double glazed sky lights and bi-fold doors to garden.

Sitting Room 16'2" x 13'11" (4.95 x 4.26)

Having a laminated wood effect floor, radiator and UPVC double glazed window to front aspect. The room opens into the :-



Ground Floor Shower Room



Having modern contemporary white three piece suite.

www.phillipsandco.co.uk | 01332 40 25 25

**Phillips
& Co**
EST. 2012
MY PAD GROUP

3 Bed House - Semi-Detached

£1,200

DCM

 Oak Crescent, Littleover, Derby, DE23 3BR

Home Office 8'2" x 7'7" (2.49 x 2.32)



Having a UPVC double glazed window to rear.

First Floor Landing

With UPVC double glazed window.

Bedroom One 11'8" x 10'3" (3.58 x 3.14)



Having a radiator and UPVC double glazed window.

Bedroom Two 12'10" x 9'6" (3.93 x 2.92)



Having an airing cupboard (housing the boiler), radiator and UPVC double glazed window.

Bedroom Three 9'4" x 7'2" (2.85 x 2.20)



Having a radiator and UPVC double glazed window.

Bathroom



Having a modern white three piece suite with UPVC opaque double glazed window.

Outside



The property occupies a sizeable mature plot, in this sought after cul-de-sac position. To the front is a tarmac fore court giving car standing space for two cars. The rear garden is laid to lawn with shrubs and timber shed.

3 Bed House - Semi-Detached

£1,200

 Oak Crescent, Littleover, Derby, DE23 3BR

DCM

You may download, store and use the material for your own personal use and research. You may not republish, retransmit, redistribute or otherwise make the material available to any party or make the same available on any website, online service or bulletin board of your own or of any other party or make the same available in hard copy or in any other media without the website owner's express prior written

