

## 2 Sykedale Croft, Dungworth, Sheffield, South Yorkshire, S6 6HT

£1,900

- ATTACHED NEW BUILD FAMILY HOME
- FOUR SPACIOUS DOUBLE BEDROOMS WITH 2 EN-SUITES
- MODERN FITTED KITCHEN AND SEPERATE UTILITY
- OFF ROAD PARKING FOR TWO VEHICLES
- BOND - £2192
- IMMACULATE HIGH FINISH THROUGHOUT
- LARGE OPEN PLAN LIVING SPACE
- GREAT RURAL LOCATION WITH COUNTRYSIDE VIEWS
- RENT - £1900
- GROUNDWORKS TO BE COMPLETED 17TH JUNE

## 2 Sykedale Croft, Sheffield S6 6HT

**\*\*EXCEPTIONAL NEW BUILD\*\*RARE OPPORTUNITY\*\*** A rare opportunity to live in a new build in the charming village of Dungworth, close to local schools and surrounded by lush countryside. This stunning brand new four bedroom home boasts an immaculate high style finish with generous sized rooms through out.

This attractive family home comprises of; Entrance hall; Larger than average open plan living area; Brand new fitted kitchen; Spacious utility room; Four generously sized double bedrooms; Two En-suites and family bathroom. To the outside the front of the property provides off road parking for two vehicles and far reaching view of the rural countryside.

This new development comprises of 5 new homes being built on a former poultry farm. All boasting stunning panoramic views of the surrounding country side with high ceilings and large open plan living areas. Creating 3 x 4 bed units and 2 x 3 bed units.



Council Tax Band: New Build





## **ENTRANCE HALL**

This beautiful property is entered via solid wooden door; Greeted by the entrance hall; With; Solid doors leading to bedrooms one and two, Utility room, family bathroom and storage cupboards. Having; High ceilings; Spot lights; Porcelanosa tiles lead directly to the large open plan living space with access to further bedrooms;

## **OPEN PLAN LIVING SPACE**

Lounge - Hardwood floors separate the lounge and dining area; Velux window offer lots of natural light; Two double central heating radiators; Freshly painted walls; High ceilings; Three ceiling lights points;

Dining area- Double glazed window to the rear elevation provides views of the beautiful surrounding country side; Central heating radiator; Freshly painted walls; High ceilings; Ceiling lights points;

## **KITCHEN AREA**

Brand new modern fitted kitchen; Comprising of; Good combination of wall, base and draw units; Sleek stone effect work top with breakfast bar; Integrated oven with large 5 ring induction hob and extractor fan; Integrated stainless steel sink, tap and drainer; Stone effect splashback; Space and plumbing for dish washer and fridge/freezer; Marble effect Porcelanosa tiles; Painted walls; Velux window offer lots of natural light; Two ceiling light point;

## **UTILITY ROOM**

Large utility room; Having; Marble effect Porcelanosa tiles; Modern base units with stone effect worktop top and splashback; Integrated stainless steel sink, tap and drainer; Space and plumbing for washing machine and dryer; Central heating radiator; Painted walls; Velux window; Ceiling light point; Extractor fan;

## **BEDROOM ONE**

Large double bedroom; With; Hardwood floors; Large front facing double glazed window; Central heating radiator; Freshly painted walls; Ceiling light point; Solid door to En-suite bathroom;

## **BEDROOM ONE EN-SUITE**

Beautiful En-suite bathroom; Comprising of; Stone effect tiled flooring; Corner shower unit with glass screen door; WC; Wash basin with mixer tap; Dark grey marble effect

dry wall panelling to wet areas; Vertical heated towel rack; Freshly painted walls; Velux window; Ceiling light point; Extractor fan;

## **BEDROOM TWO**

Generously sized double bedroom; Having; Hardwood floors; Large front facing double glazed window; Central heating radiator; Freshly painted walls; Ceiling light point; Solid door to En-suite bathroom;

## **BEDROOM TWO EN-SUITE**

Beautiful En-suite bathroom; Comprising of; Stone effect tiled flooring; Corner shower unit with glass screen door; WC; Wash basin with mixer tap; Dark grey marble effect dry wall panelling to wet areas; Vertical heated towel rack; Freshly painted walls; Velux window; Ceiling light point; Extractor fan;

## **BEDROOM THREE**

Spacious double bedroom; Comprising of; Hardwood floors; Large double glazed window to rear elevation; Central heating radiator; Freshly painted walls; Ceiling light point;

## **BEDROOM FOUR**

Another spacious double bedroom; Having; Hardwood floors; Large double glazed window to rear elevation; Central heating radiator; Freshly painted walls; Ceiling light point;

## **FAMILY BATHROOM**

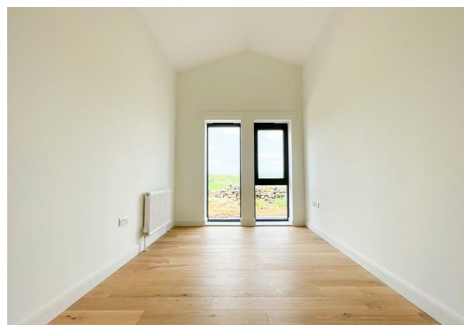
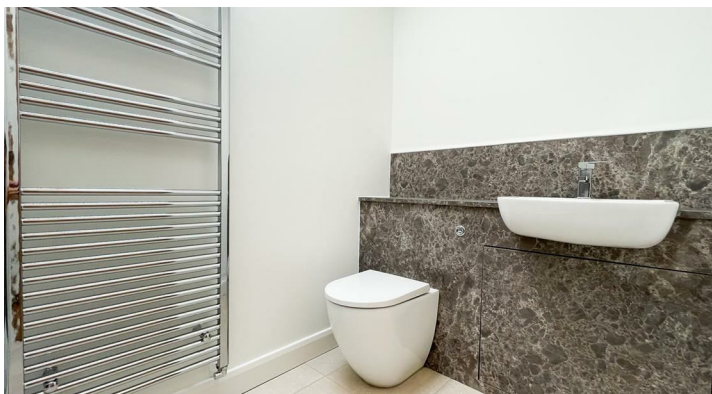
Attractive family bathroom; With; Three piece suit; Comprising of; Panelled bath, WC, Wash basin with mixer tap; Separate shower with glass screen door; Grey marble effect dry wall panelling; Vertical heated towel rack; Stone effect flooring; Velux window; Freshly painted walls; Ceiling light point; Extractor fan;

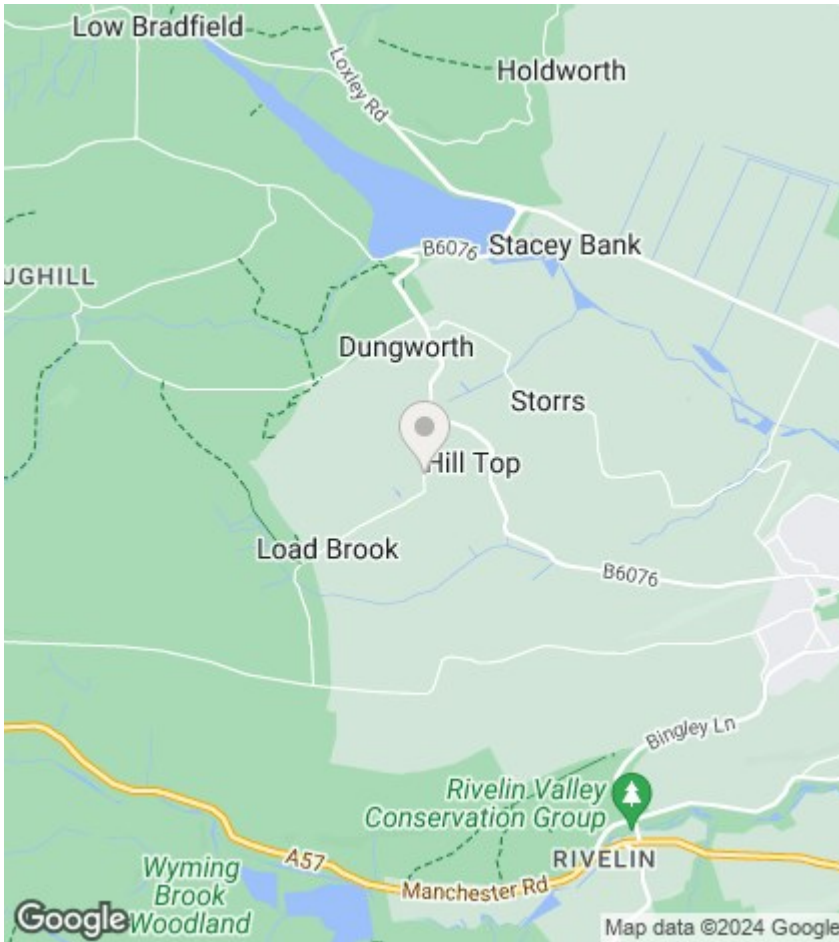
## **OUTSIDE**

Benefiting from off road parking for two vehicles; Surrounded by the picturesque rural country side;









Directions

Viewings

Viewings by arrangement only. Call 0114 2299 060 to make an appointment.

EPC Rating: