



CULVERDEN ROAD SW12
£2,000 PER MONTH AVAILABLE 28/02/2026

Hamptons

THE HOME EXPERTS

{ THE PARTICULARS

Culverden Road SW12

£2,000 Per Month
Furnished

-  1 Bedroom
-  1 Bathroom
-  1 Reception

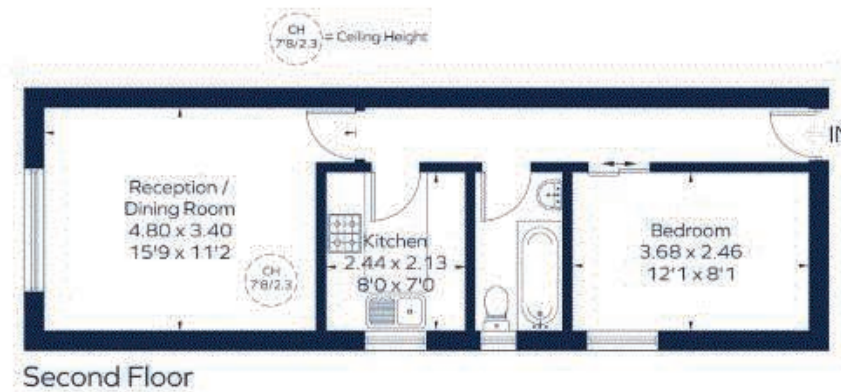
Council Tax

Hamptons
11-13 Bedford Hill
London, SW12 9ET
020 8618 2014
Balhamlettings@hamptons.co.uk
www.hamptons.co.uk



CULVERDEN ROAD

Approximate Gross Internal Area = 439 sq. ft. (40.8 sq. m.)



This plan is for layout guidance only. Not drawn to scale unless stated. Windows and door openings are approximate. Whilst every care is taken in the preparation of this plan, please check all dimensions, shapes and compass bearings before making any decisions reliant upon them.

ID 1269394

For Clarification

We wish to inform prospective tenants that we have prepared these particulars as a general guide and they have been confirmed as accurate by the landlord. We have not verified permissions, nor carried out a survey, tested the services, appliances and specific fittings. Room sizes are approximate and measurement figures rounded: they are taken between internal wall surfaces and therefore include cupboards/shelves, etc. Accordingly, they should not be relied upon for

carpets and furnishings. It should also be noted that all fixtures and fittings, carpeted, curtains/blinds, kitchen equipment and garden statuary, whether fitted or not, are deemed removable by the landlord unless specifically itemised with these particulars. Please enquire in office or on our website for details on holding deposit and tenancy deposit figures.

Energy Efficiency Rating		
	Current	Potential
<div> <div></div> <div>Very energy efficient - lower running costs</div> </div> <div> <div></div> <div>A</div> </div> <div> <div></div> <div>B</div> </div> <div> <div></div> <div>C</div> </div> <div> <div></div> <div>D</div> </div> <div> <div></div> <div>E</div> </div> <div> <div></div> <div>F</div> </div> <div> <div></div> <div>G</div> </div> <div> <div></div> <div>Not energy efficient - higher running costs</div> </div>	67	74
England & Wales <small>EU Directive 2002/91/EC</small>		

Awaiting Photograph