



Caldy Road, Caldy, Wirral CH48 1LP

- Exquisite Six Bedroom, Six Bathroom Detached Family Residence
- Opulent Home of Immense Proportions Finished to Exacting Standards
- Hallway with Gallery Landing, Cloaks, W.C, Utility Room and Shower Room
- Breathtaking 48 Foot Open Plan Living Kitchen Dining Room with Vaulted Ceiling
- Gated Access, Ample Off Road Parking and Double Garage with Guest Bedroom
- Boasting Approximately 6,800 Square Foot of Sumptuous Living Space
- Arranged Over Three Floors with an Abundance of Luxury Finishing Touches
- Formal Lounge, Cinema Room and Gym with Bi-Folding Doors to the Rear Garden
- Five Sizeable Bedrooms Set Over Two Floors all with Dressing Rooms and En Suites
- Encapsulated in Extensive Stunning Wrap Around Private Landscaped Gardens



£2,250,000







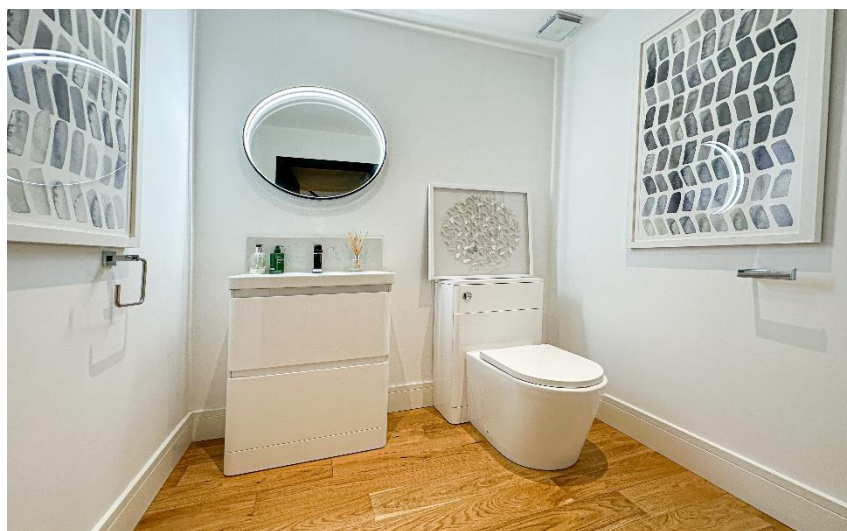
























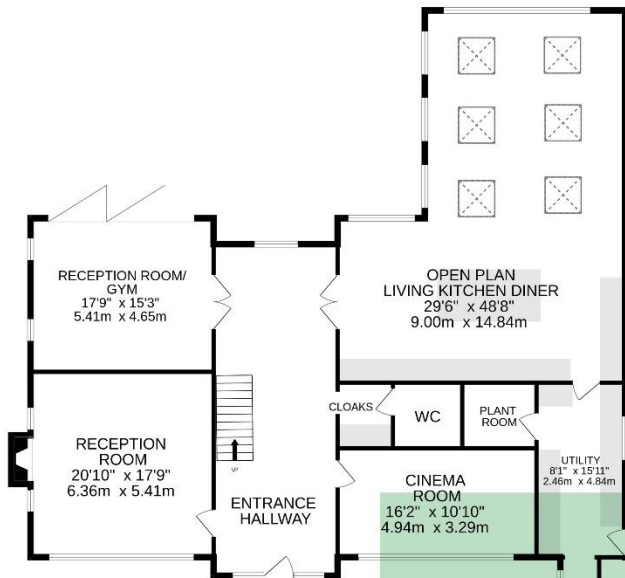




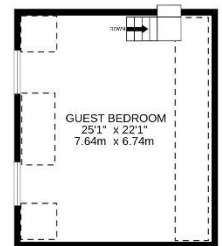
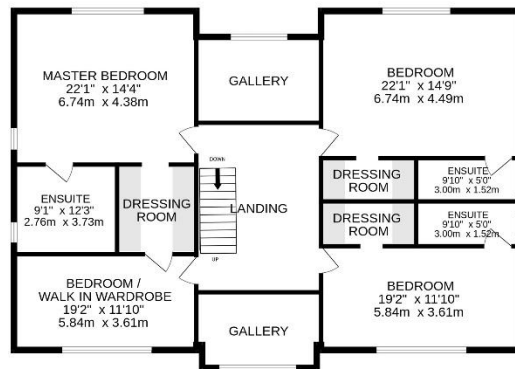




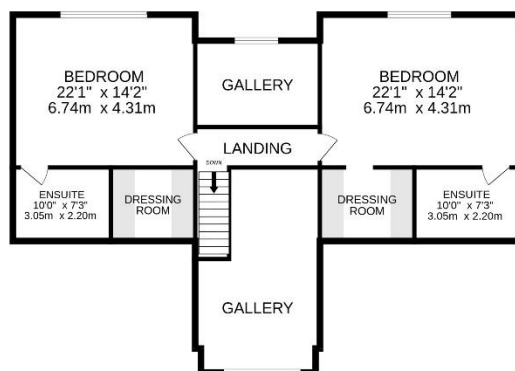
GROUND FLOOR



FIRST FLOOR



SECOND FLOOR



TOTAL FLOOR AREA : 6800sq.ft. (631.7 sq.m.) approx.

Whilst every attempt has been made to ensure the accuracy of the floorplan contained here, measurements of doors, windows, rooms and any other items are approximate and no responsibility is taken for any error, omission or mis-statement. This plan is for illustrative purposes only and should be used as such by any prospective purchaser. The services, systems and appliances shown have not been tested and no guarantee as to their operability or efficiency can be given.

Made with Metropix ©2025

Description

Sumptuous six bedroom, six bathroom architectural masterpiece. This exceptional detached family residence offers approximately 6,800 square feet of exquisite living space, meticulously designed and finished to the highest standards. Every detail has been thoughtfully considered to create a home that exudes sophistication, flooded with natural light and adorned with luxurious finishing touches throughout.

Upon entering, you are greeted by a grand triple height entrance hallway featuring a striking suspended landing and impressive double height windows. The ground floor offers a spacious lounge, a dedicated cinema room and a gym with bi-folding doors opening onto the beautifully landscaped rear garden. At the heart of the home lies the stunning open plan kitchen, living, and dining area, an expansive 1,100 square feet space showcasing a bespoke fitted kitchen and statement windows that create a perfect blend of elegance and functionality. Completing the ground floor are a cloakroom, W.C, plant room, utility room and an inner hallway leading to a shower room.

The first floor features the dramatic floating landing, giving access to the sumptuous master suite complete with dressing room and luxurious en suite bathroom. along with access to a further bedroom currently used as a walk in wardrobe. Two additional generous double bedrooms, each with their own dressing rooms and en suites are also located on this level. The second floor continues to impress, offering two further double bedrooms, again each benefiting from dressing rooms and en suite shower rooms. A large guest suite, situated above the garage and accessed via the inner hallway, provides ideal accommodation for visitors or extended family.

A sweeping driveway leads to ample off road parking and an attached double garage, framed by an elegant frontage. Completing this magnificent home are beautifully landscaped gardens, providing an idyllic setting for both entertaining and relaxation.

EPC Summary

Score	Energy rating	Current	Potential
92+	A		
81-91	B	87 B	89 B
69-80	C		
55-68	D		
39-54	E		
21-38	F		
1-20	G		

Additional Information

These particulars are thought to be materially correct though their accuracy is not guaranteed and they do not form part of any contract. All measurements are approximate and we have not tested any fitted appliances, electrical or plumbing installation or central heating systems. Floor plans are for illustration purposes only and their accuracy is not guaranteed.