



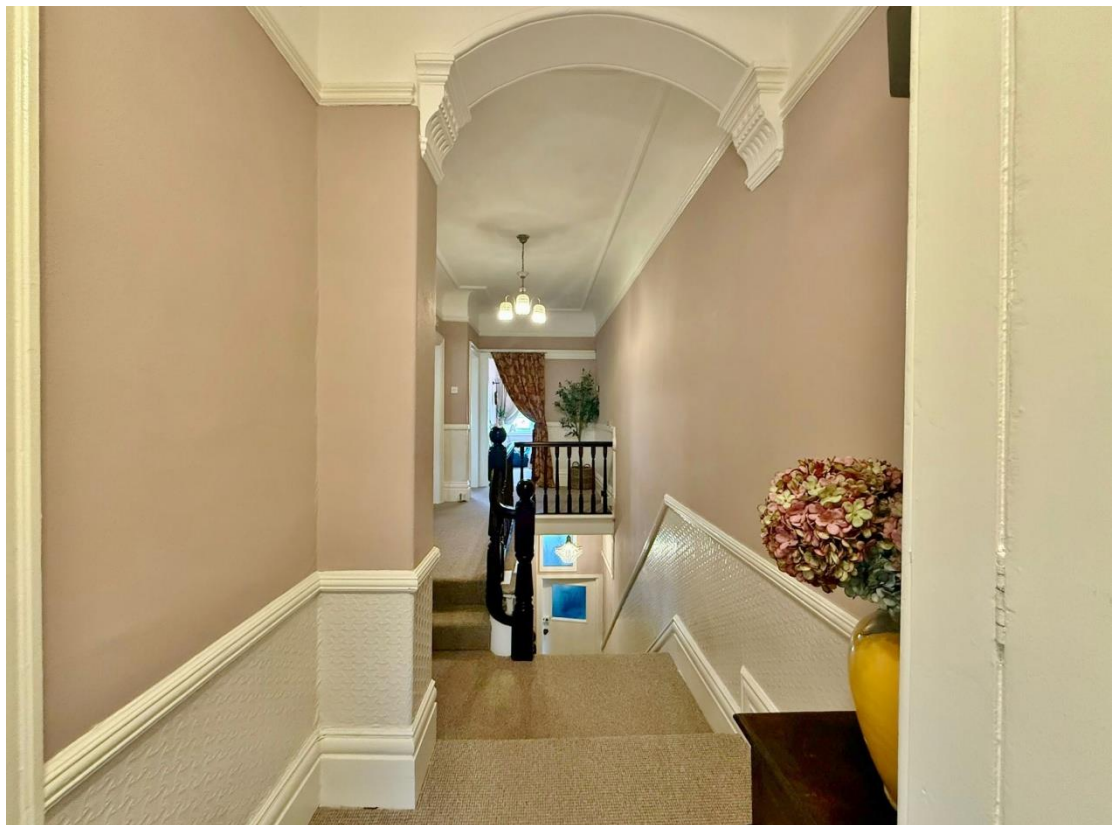
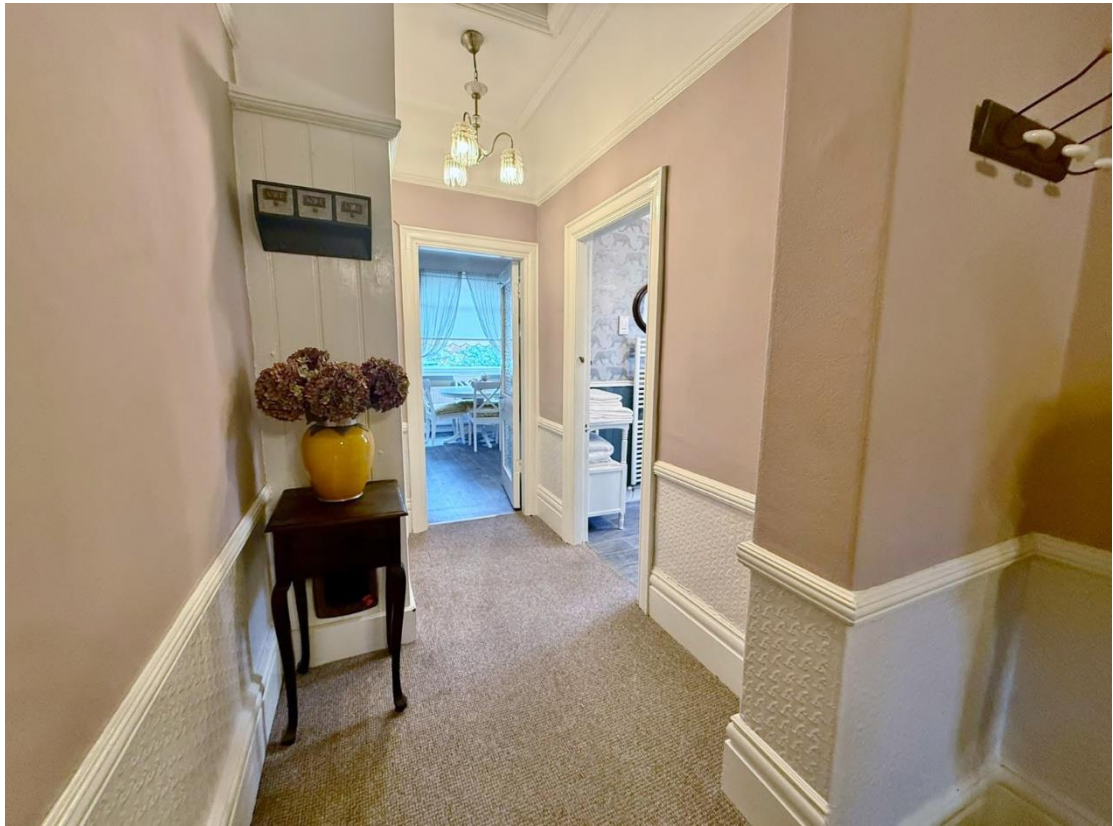
## Bidston Avenue, Claughton , Wirral CH41 0EN

- Character Two Bedroom First Floor Apartment
- Benefitting From Having its Own Private Access
- Spacious Lounge and Well Fitted Kitchen Diner
- Easy Reach of Amenities and Transport Links
- Offered to the Sales Market with No Onward Chain
- Well Maintained and Appointed Accommodation
- Two Bedrooms and a Three Piece Bathroom Suite
- Closer Inspection Strongly Recommended



£125,000 – No Onward Chain











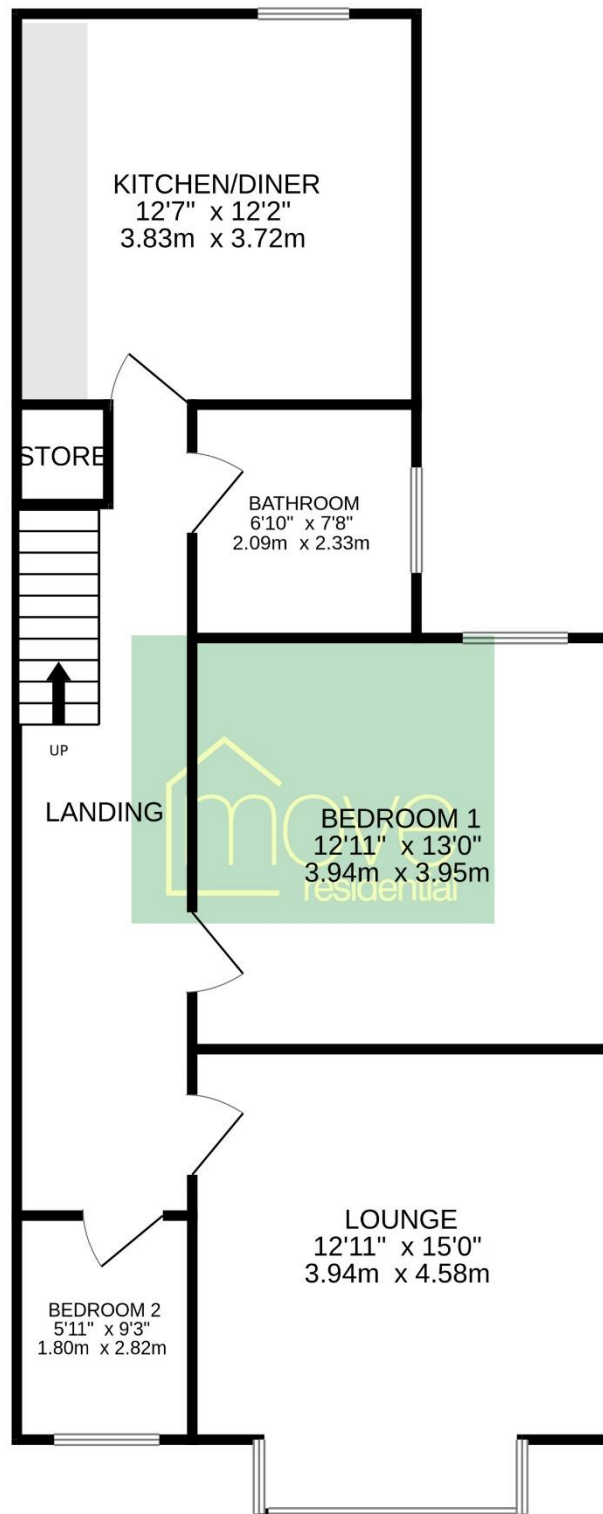








FIRST FLOOR



TOTAL FLOOR AREA : 725 sq.ft. (67.4 sq.m.) approx.

Whilst every attempt has been made to ensure the accuracy of the floorplan contained here, measurements of doors, windows, rooms and any other items are approximate and no responsibility is taken for any error, omission or mis-statement. This plan is for illustrative purposes only and should be used as such by any prospective purchaser. The services, systems and appliances shown have not been tested and no guarantee as to their operability or efficiency can be given.  
Made with Metropix ©2025

## **Description**

Move Residential are delighted to bring to the sales market, with no onward chain, this charming two bedroom first floor apartment with its own private entrance. Well maintained and tastefully appointed, the accommodation briefly comprises: a welcoming landing, spacious lounge with bay window and feature fireplace and a generously sized kitchen diner. There are two well proportioned bedrooms and a three piece bathroom completing the layout. Situated within easy reach of local amenities and excellent transport links, this property is ideal for a range of buyers. A closer inspection is strongly recommended to fully appreciate what this home has to offer.

## **EPC Summary**

*Awaiting Certificate*

## **Additional Information**

These particulars are thought to be materially correct though their accuracy is not guaranteed and they do not form part of any contract. All measurements are approximate and we have not tested any fitted appliances, electrical or plumbing installation or central heating systems. Floor plans are for illustration purposes only and their accuracy is not guaranteed.