



Sandon Road, Wallasey, Wirral CH44 8BZ

- Substantial Five Bedroom Mid Terraced Property
- Well Maintained Family Living Accommodation
- Three First Floor Bedrooms and Bathroom
- Set Back from the Road with Front Garden
- Over 1500 Square Feet Set Over Three Floors
- Hallway, Lounge, Dining Room and Kitchen
- Two Sizeable Bedrooms to the Second Floor
- Low Maintenance Rear Yard with Access Gate



£250,000

















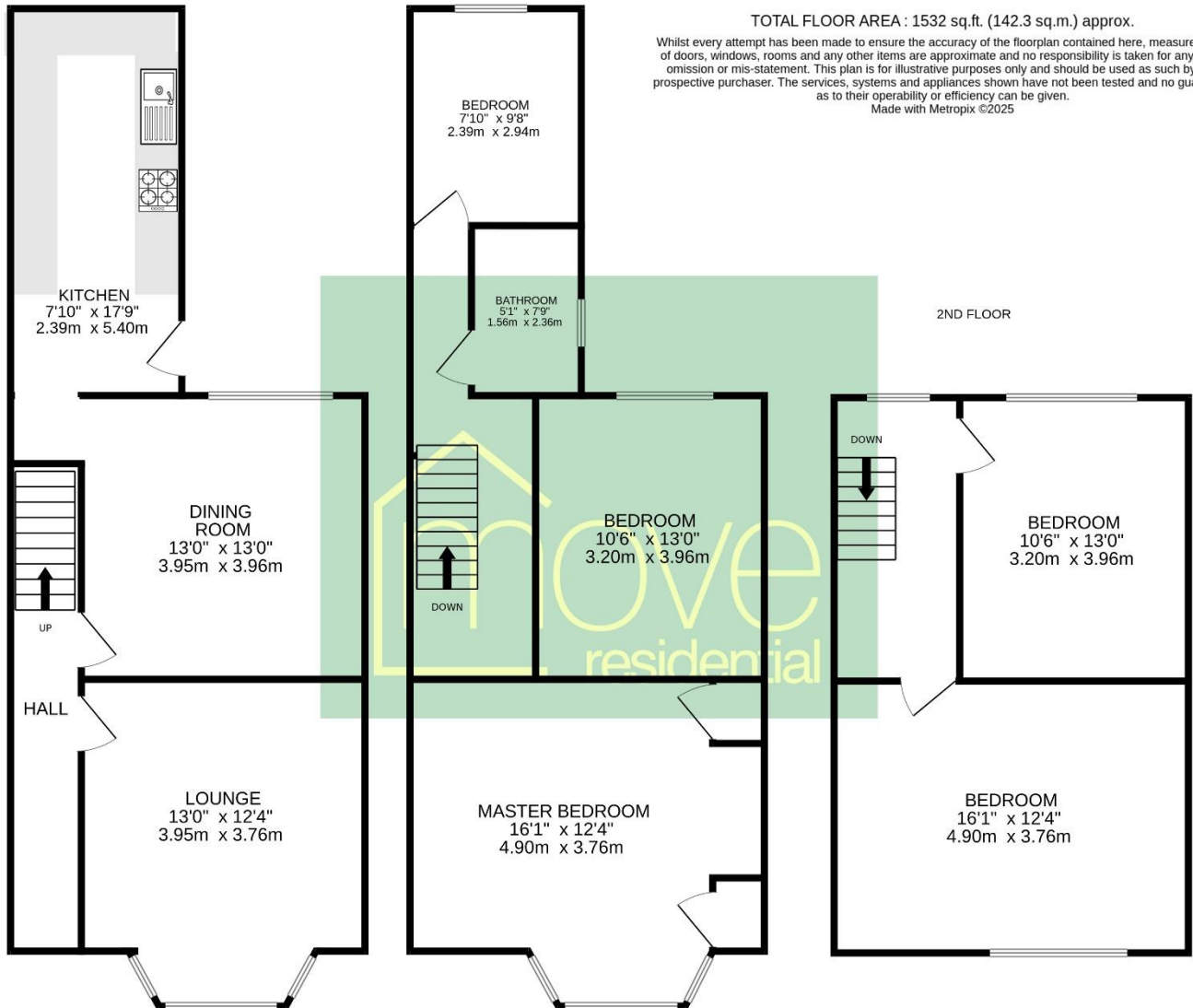
Description

This substantial five bedroom mid terraced property, set across three floors and offering over 1,500 square feet of accommodation, presents a perfect opportunity for buyers seeking space and location. Situated in the popular area of Wallasey, the property enjoys a convenient position on a road that leads directly to the promenade, making it ideal for those who appreciate coastal walks and access to local amenities.

Internally, the home is well maintained and briefly comprises a welcoming entrance hallway, bay fronted lounge with fireplace, separate dining room, and a well fitted kitchen to the rear. The layout provides flexible living space suited to growing families or those working from home. On the first floor, the property features a generously sized master bedroom, two further bedrooms, and a family bathroom fitted with a traditional three piece suite. The second floor offers two additional bedrooms, providing ample sleeping, office or storage space. Externally, there is a front garden and an enclosed rear courtyard with gated access. The property offers great potential for buyers looking to put their own stamp on a home in a desirable location, a closer inspection is strongly recommended.

GROUND FLOOR

1ST FLOOR



EPC Summary

Score	Energy rating	Current	Potential
92+	A		
81-91	B		82 B
69-80	C	69 C	
55-68	D		
39-54	E		
21-38	F		
1-20	G		

Additional Information

These particulars are thought to be materially correct though their accuracy is not guaranteed and they do not form part of any contract. All measurements are approximate and we have not tested any fitted appliances, electrical or plumbing installation or central heating systems. Floor plans are for illustration purposes only and their accuracy is not guaranteed.