



Elmure Avenue, Bebington, Wirral CH63 2NB

- Idyllic and Modernised Three Bedroom Detached Family Residence
- Immaculately Presented with Over 1400 Square Feet of Sumptuous Accommodation
- Impressive Open Plan Living Kitchen Diner with Access to a Covered Terrace
- Driveway and Detached Garage Currently Used as Office/Garden Room
- Nestled in a Quiet Cul-De-Sac in the Popular Residential Area of Bebington
- Hallway, Spacious Front Lounge, Contemporary Shower Room and Ample Storage
- Two Double Bedrooms with Storage, Third Bedroom and En Suite Bathroom
- Generous Sized Plot with Beautifully Landscaped Sunny Rear Garden



£365,000





















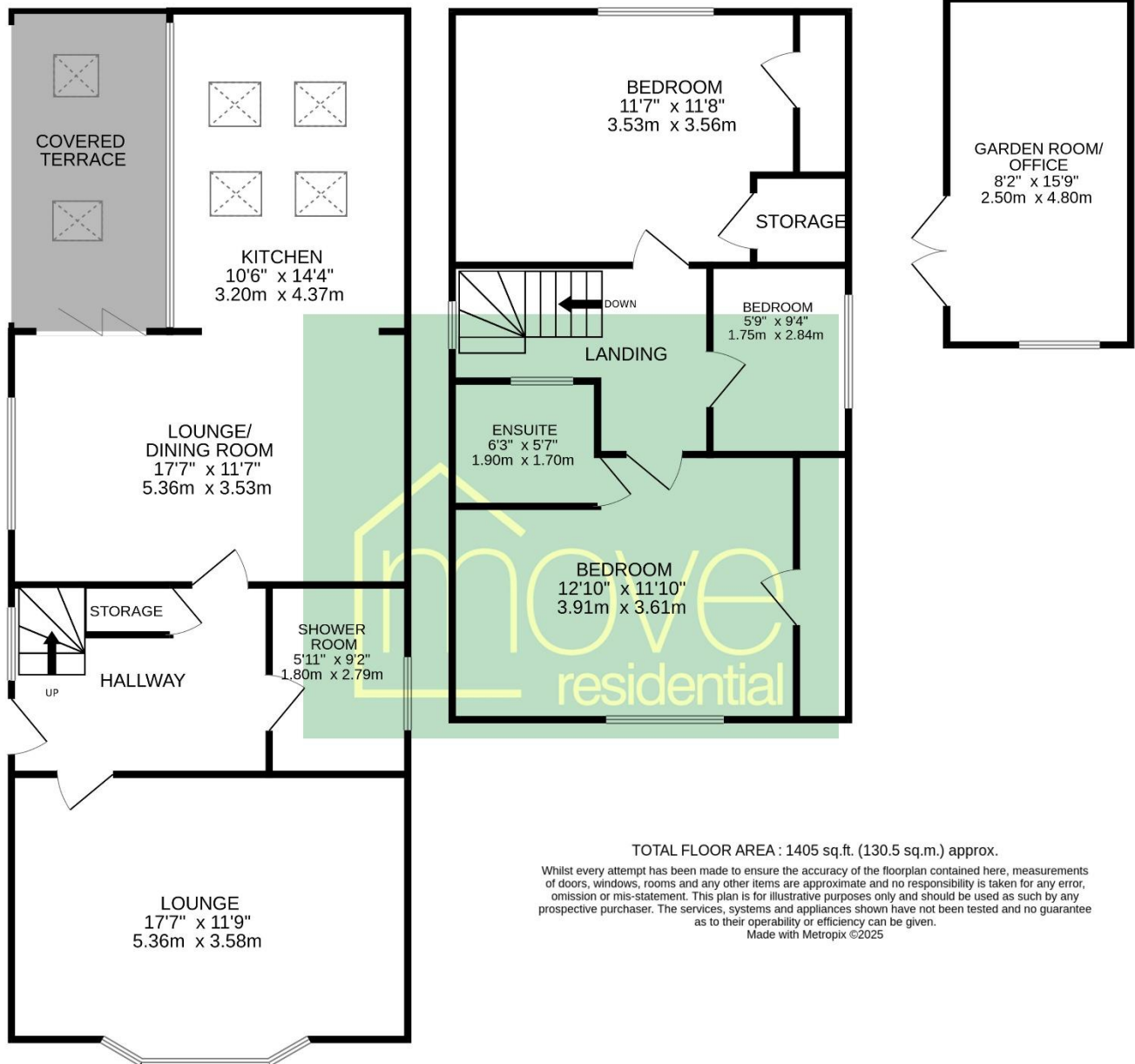




GROUND FLOOR

1ST FLOOR

OUTBUILDING



Description

Tucked away in a peaceful cul-de-sac in the heart of Bebington, this idyllic and beautifully modernised detached residence offers the perfect blend of style, space, and comfort. Boasting a bright and generously proportioned interior spanning over 1400 square feet, this home is thoughtfully arranged to suit modern family living.

The welcoming hallway with convenient storage leads to a versatile front lounge with box bay window. At the heart of this home lies a stunning open plan living kitchen diner, complete with a bespoke high-quality kitchen under a pitched roof with skylight windows, and a light-filled lounge/diner with bi-fold doors opening onto a covered terrace, ideal for indoor/outdoor entertaining. A sleek, contemporary shower room completes the ground floor. Upstairs hosts two spacious double bedrooms with built-in storage, a third bedroom and a stylish en suite bathroom. The property also offers clever storage solutions integrated throughout.

Outside, the beautifully landscaped gardens provide a tranquil retreat, with a patio, manicured lawn and mature planting borders providing a profusion of colour through the summer months. A detached garage, currently used as a garden room or office and ample off road parking add to the appeal. With excellent access to amenities, transport links and schools, this home is a rare gem, early viewing is strongly recommended.

EPC Summary

Awaiting Certificate

Additional Information

These particulars are thought to be materially correct though their accuracy is not guaranteed and they do not form part of any contract. All measurements are approximate and we have not tested any fitted appliances, electrical or plumbing installation or central heating systems. Floor plans are for illustration purposes only and their accuracy is not guaranteed.