



Linnets Way, Heswall, Wirral CH60 9JW

- Attractive and Spacious Four Bedroom Detached Dormer Bungalow
- Generous Sized Elevated Plot Enjoying Sensational Views Towards the Estuary
- Two Ground Floor Bedrooms with Fitted Wardrobes and a Modern Shower Room
- Driveway, Integral Garage and Beautifully Landscaped Front and Rear Gardens
- Immaculately Presented Spanning Over 2,000 Square Feet of Living Space
- Hallway, Lounge with Fireplace, Dining Room, Well Fitted Kitchen and Utility
- Two Large First Floor Bedrooms with Views and a Further Shower Room
- Prime Lower Heswall Location - Early Inspection Strongly Recommended



£699,950





























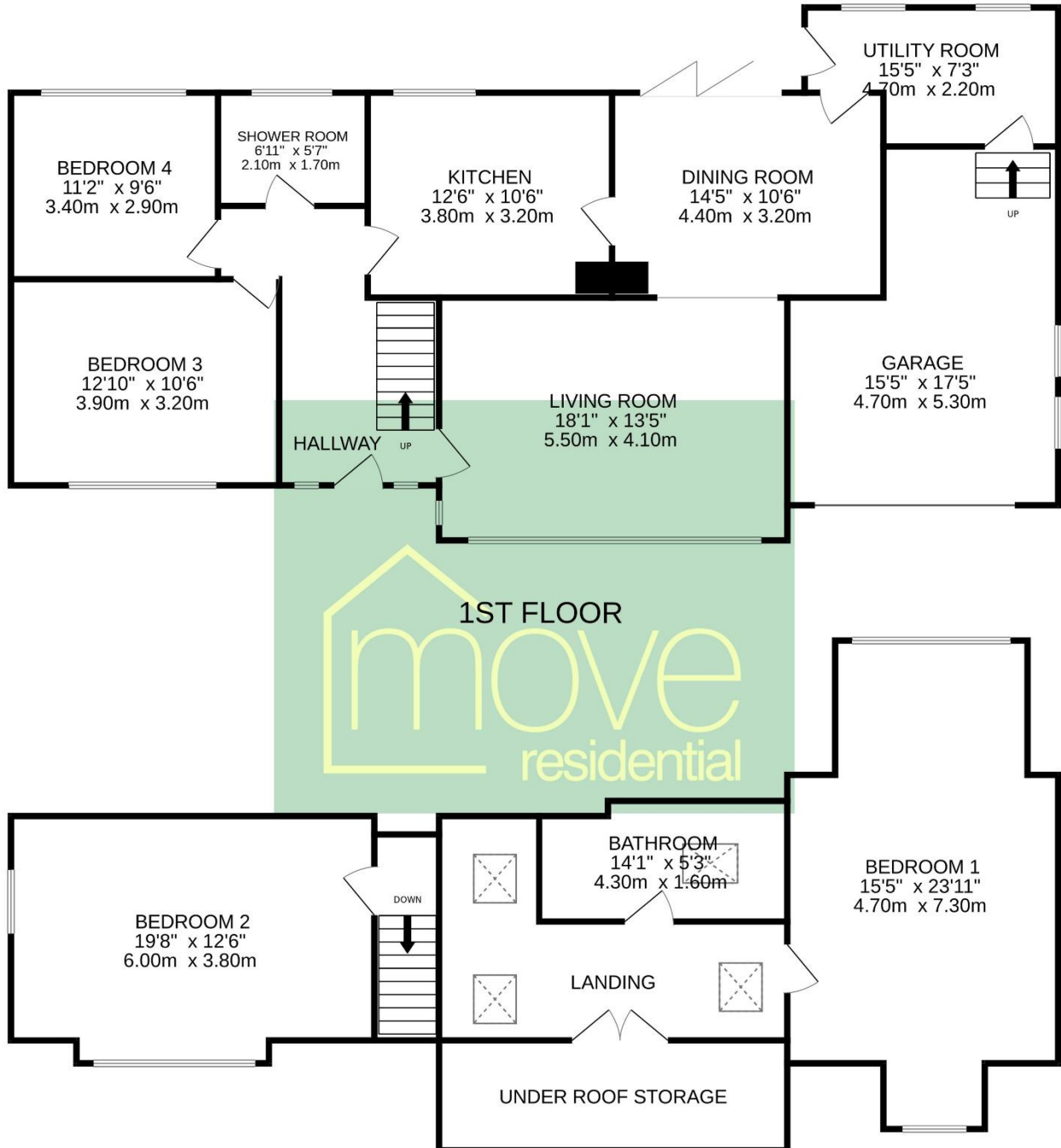
Description

Occupying a generous sized elevated plot in the prime location of Lower Heswall with stunning Estuary Views, Move Residential are delighted to showcase this impressive four bedroom detached dormer bungalow. Immaculately presented and appointed with a tasteful décor spanning over 2,000 square feet of sumptuous living accommodation.

Briefly comprising a welcoming hallway, generous sized lounge with stunning Estuary views, feature fireplace and archway leading to a dining room. Well fitted kitchen, utility room, two bedrooms both with sliding fitted mirrored wardrobes and a modern shower room. To the first floor you have two well proportioned bedrooms both with lovely views, eaves storage and a further shower room. The plot encapsulates this home perfectly, with manicured front garden, driveway and integral garage. To the rear you have a beautifully landscaped garden with patio area, raised lawn, mature plant beds and a raised seating area positioned to fully appreciate the views and sunny aspect.

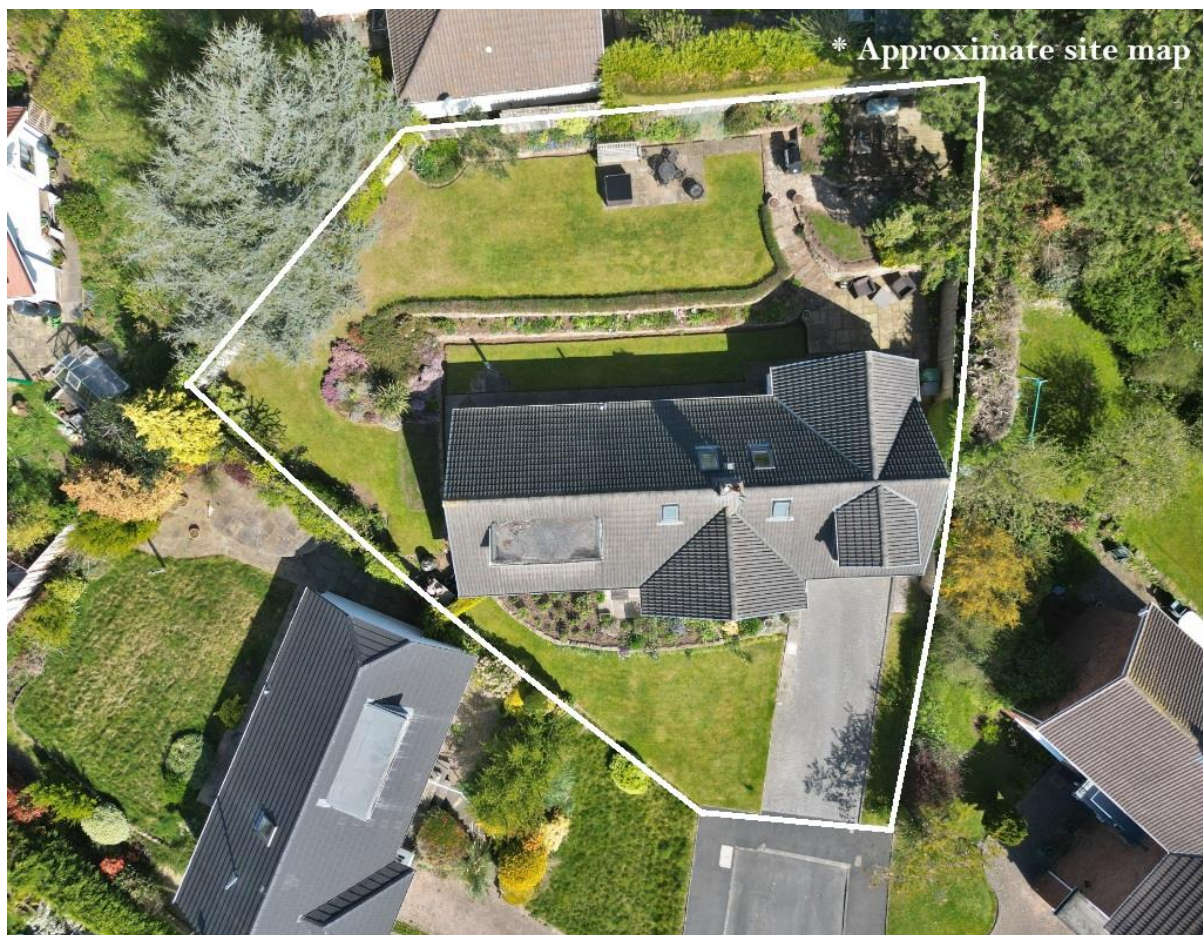
An enviable location nestled in the prestigious area of Lower Heswall. With excellent local amenities, thriving community spirit and easy access throughout Wirral, Chester and Liverpool. Heswall is a town with its own unique charm, bustling with local boutique shops, cafes and beauty salons. Boasting a wealth of schools for all ages, there are superb recreational facilities close by including Heswall Golf Club, Football Club, Tennis and Squash Club.

GROUND FLOOR



TOTAL FLOOR AREA : 2072 sq.ft. (192.5 sq.m.) approx.

Whilst every attempt has been made to ensure the accuracy of the floorplan contained here, measurements of doors, windows, rooms and any other items are approximate and no responsibility is taken for any error, omission or mis-statement. This plan is for illustrative purposes only and should be used as such by any prospective purchaser. The services, systems and appliances shown have not been tested and no guarantee as to their operability or efficiency can be given.
Made with Metropix ©2025



EPC Summary

Awaiting summary

Additional Information

These particulars are thought to be materially correct though their accuracy is not guaranteed and they do not form part of any contract. All measurements are approximate and we have not tested any fitted appliances, electrical or plumbing installation or central heating systems. Floor plans are for illustration purposes only and their accuracy is not guaranteed.