



Heather Dene, Bromborough, Wirral CH62 2BQ

- Spacious Three Bedroom Detached Family Residence
- Spanning Over 1250 Square Foot of Living Space
- Modern Fitted Breakfast Kitchen with Bi-Fold Doors
- Large Enclosed Private Rear Garden with Patio and Lawn
- Detached Garage and Detached Study/Studio
- Hallway, W.C and Two Large Reception Rooms
- Three Sizable Bedrooms and Contemporary Bathroom
- Close to Amenities, Transport Links and Excellent Schools



Offers Over £300,000 – No Onward Chain













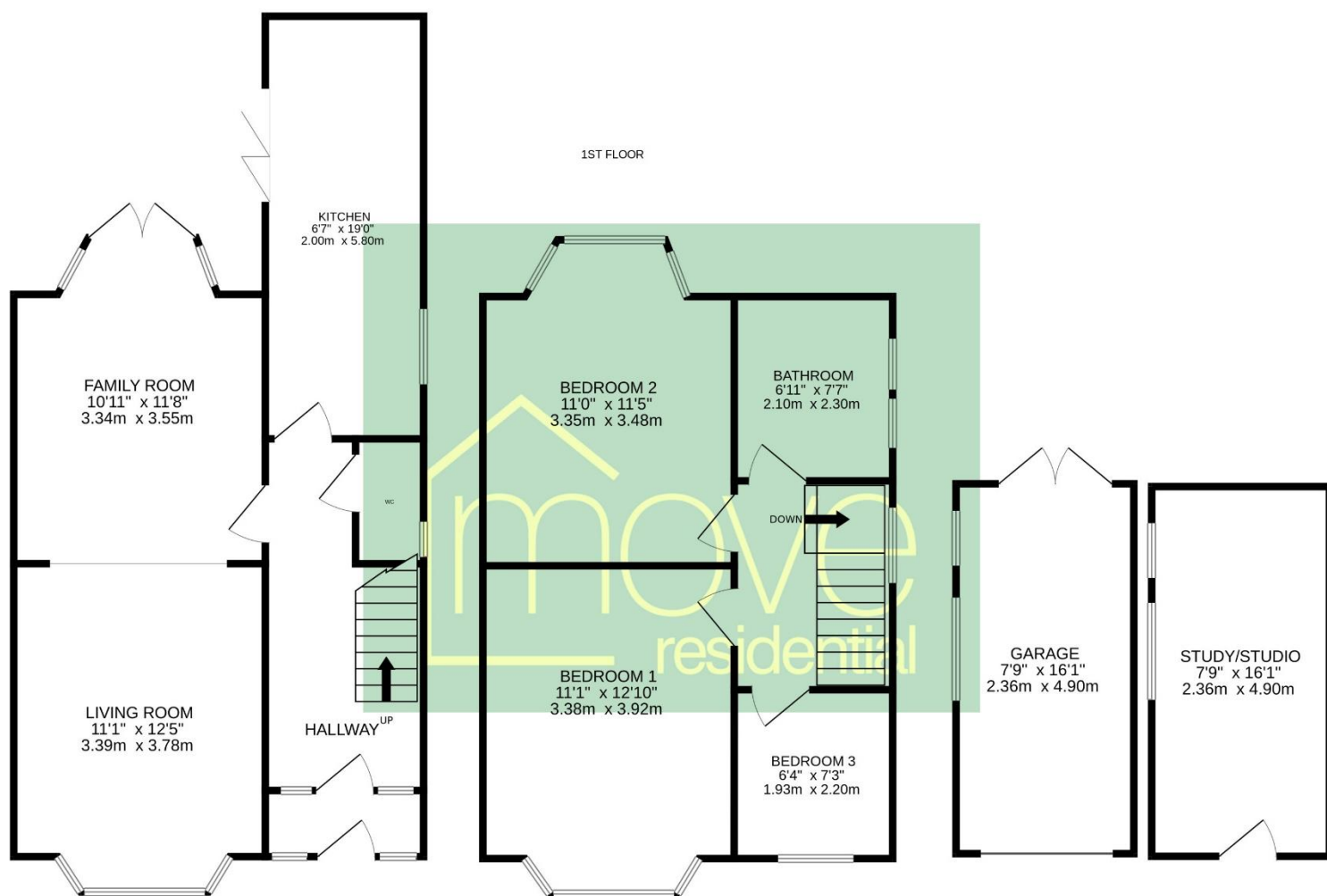








GROUND FLOOR



TOTAL FLOOR AREA : 1257 sq.ft. (116.8 sq.m.) approx.

Whilst every attempt has been made to ensure the accuracy of the floorplan contained here, measurements of doors, windows, rooms and any other items are approximate and no responsibility is taken for any error, omission or mis-statement. This plan is for illustrative purposes only and should be used as such by any prospective purchaser. The services, systems and appliances shown have not been tested and no guarantee as to their operability or efficiency can be given.
Made with Metropix ©2025

Description

Move Residential are delighted to present for sale this superb three bedroom detached home spanning over 1250 square foot of living space with a detached garage and separate studio. This spacious and well planned accommodation briefly comprises a hallway, W.C, two through reception rooms and a contemporary fitted breakfast kitchen with underfloor heating and bi-folding doors opening to the rear garden. To the first floor you have two double bedrooms, third bedroom and a modern three piece bathroom. Completing this home perfectly you have a generous enclosed rear garden, enjoying a high degree of privacy with lawn and patio areas. Bromborough is a highly sought after area with excellent amenities, transport links and schools for all age groups. A closer inspection is strongly recommended to appreciate this home in full.

EPC Summary

Score	Energy rating	Current	Potential
92+	A		
81-91	B		87 B
69-80	C		
55-68	D	55 D	
39-54	E		
21-38	F		
1-20	G		

Additional Information

These particulars are thought to be materially correct though their accuracy is not guaranteed and they do not form part of any contract. All measurements are approximate and we have not tested any fitted appliances, electrical or plumbing installation or central heating systems. Floor plans are for illustration purposes only and their accuracy is not guaranteed.