



Cliffe Road, Little Neston, Cheshire CH64 4AJ

- Deceptively Spacious Two Double Bedroom Detached Bungalow
- Immaculately Presented and Versatile Living Accommodation
- Master Bedroom with Dressing Area and En Suite Shower Room
- Gated Access to Off Road Parking and a Large Detached Garage

- Occupying a Generous Sized Plot in the Popular Area of Little Neston
- Hallway, Lounge with Fireplace, Dining Room and Modern Kitchen
- Second Double Bedroom and a Three Piece Bathroom Suite
- Well Maintained Gardens Mainly Laid to Lawn - Viewing Essential



£350,000



* Approximate site map



















Description

Magnificent two double bedroom detached bungalow, occupying a generous sized plot in the popular residential area of Little Neston. Immaculately presented with a tasteful décor this versatile accommodation must be viewed to be appreciated in full. Gated access opens to off road parking and a large detached garage. Inside this superb home you are greeted by a welcoming hallway, generous sized lounge with feature log burning fireplace and double doors opening into a dining room. Modern fitted kitchen with a range of wall and base units with complimentary work tops. Large master bedroom with dressing area and contemporary en suite shower room, second double bedroom and a three piece bathroom suite. Encapsulating home home perfectly is the generous gardens, mainly laid to lawn with patio area enjoying a high degree of privacy.

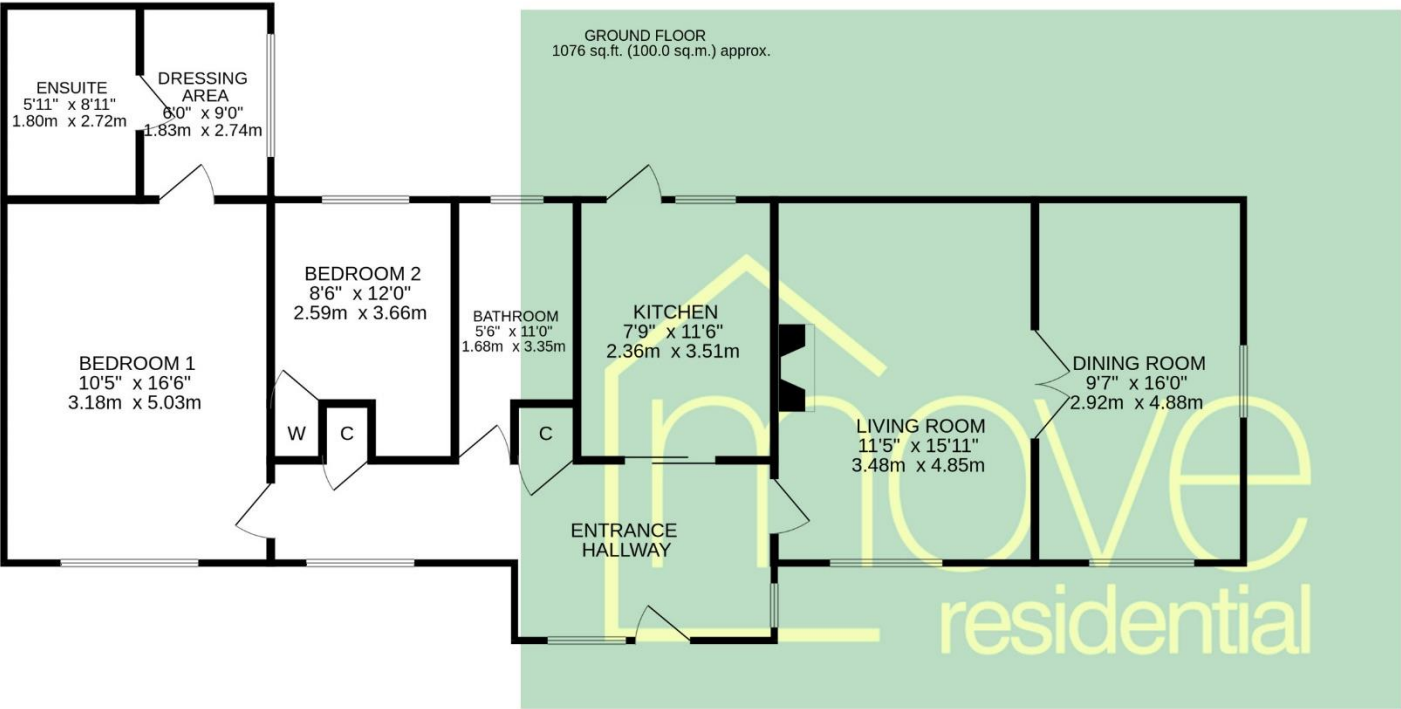
EPC Summary

Score	Energy rating	Current	Potential
92+	A		
81-91	B		
69-80	C		78 C
55-68	D	63 D	
39-54	E		
21-38	F		
1-20	G		

Additional Information

These particulars are thought to be materially correct though their accuracy is not guaranteed and they do not form part of any contract. All measurements are approximate and we have not tested any fitted appliances, electrical or plumbing installation or central heating systems. Floor plans are for illustration purposes only and their accuracy is not guaranteed.

Floor Plan



TOTAL FLOOR AREA : 1076sq.ft. (100.0 sq.m.) approx.

Whilst every attempt has been made to ensure the accuracy of the floorplan contained here, measurements of doors, windows, rooms and any other items are approximate and no responsibility is taken for any error, omission or mis-statement. This plan is for illustrative purposes only and should be used as such by any prospective purchaser. The services, systems and appliances shown have not been tested and no guarantee as to their operability or efficiency can be given.
Made with Metropix ©2025

