

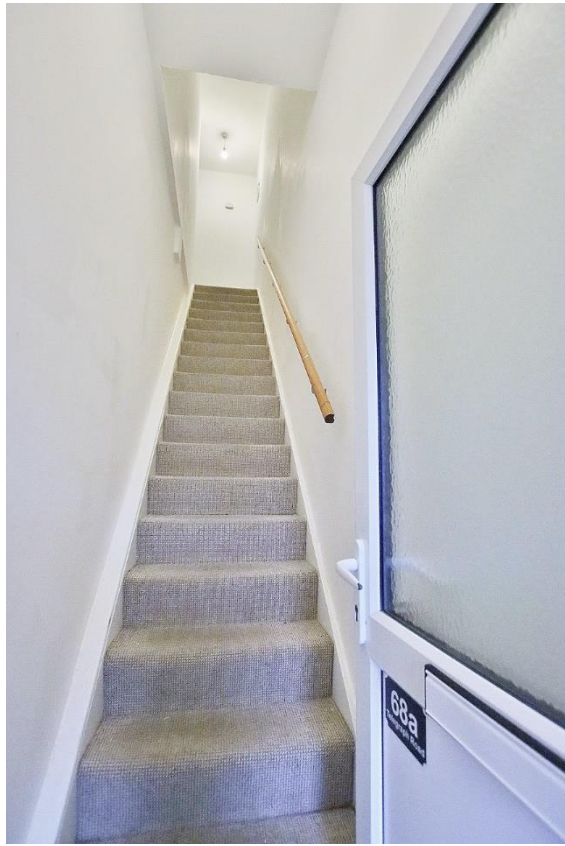


Telegraph Road, Heswall, Wirral CH60 0AG

- Spacious First Floor Two Bedroom Apartment
- Offered for Sale with No Onward Chain
- Hall, Lounge with Fireplace and Fitted Kitchen
- Rear Access off Briar Drive On Street Parking Nearby
- Situated in the Heart of Heswall Town Centre
- Bright, Fresh and Neutral Decor Throughout
- Two Double Bedrooms and Modern Bathroom
- Closer Inspection Strongly Recommended



£159,000 – No Onward Chain



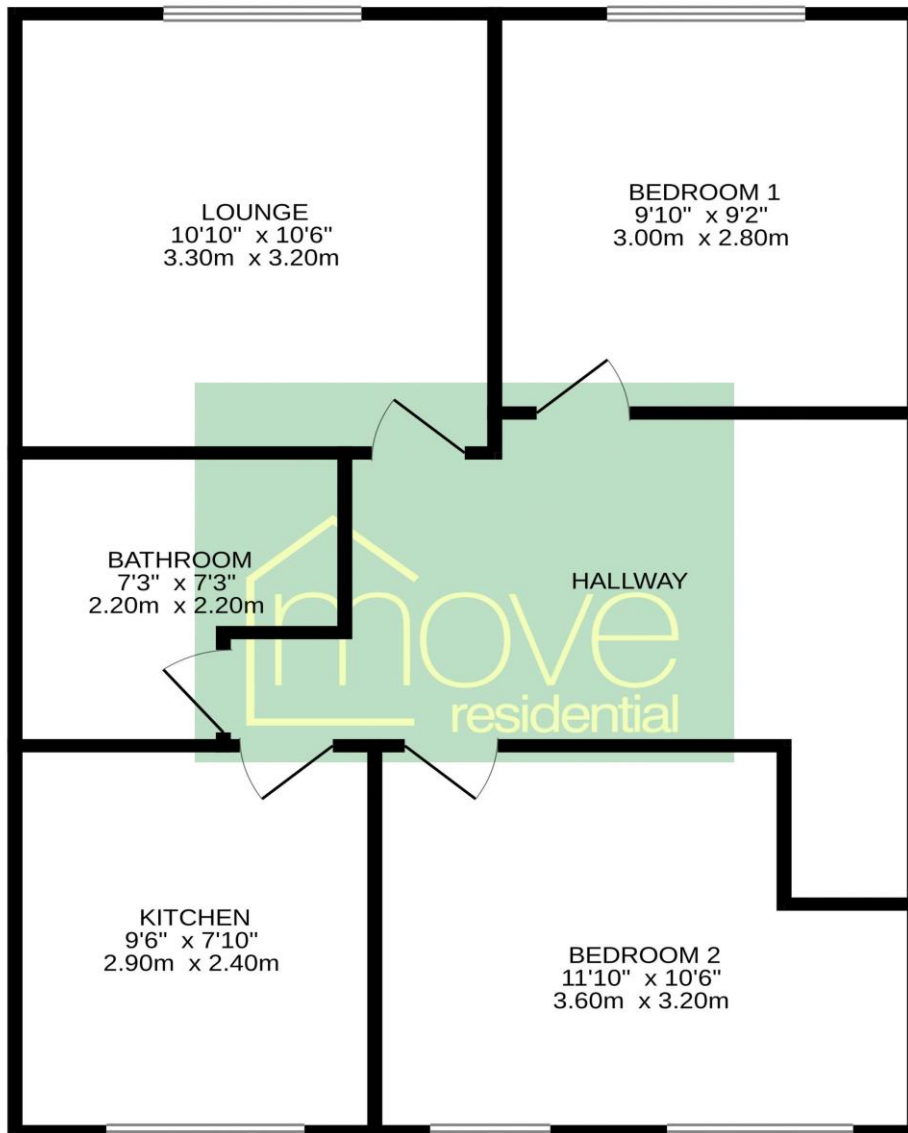






Floor Plan

FIRST FLOOR
543 sq.ft. (50.4 sq.m.) approx.



TOTAL FLOOR AREA : 543 sq.ft. (50.4 sq.m.) approx.

Whilst every attempt has been made to ensure the accuracy of the floorplan contained here, measurements of doors, windows, rooms and any other items are approximate and no responsibility is taken for any error, omission or mis-statement. This plan is for illustrative purposes only and should be used as such by any prospective purchaser. The services, systems and appliances shown have not been tested and no guarantee as to their operability or efficiency can be given.
Made with Metropix ©2024

Description

Set in the heart of Heswall, Move Residential are delighted to present for sale with no onward chain this spacious two double bedroom first floor apartment. Well maintained with a fresh, bright and neutral décor throughout the accommodation is accessed off Briar Drive and has on street parking nearby. Briefly comprises a hallway, spacious lounge with feature fireplace and a well fitted kitchen. Two double bedrooms and a three piece bathroom suite complete this home. A closer inspection is strongly recommended to appreciate this property and its location in full.

EPC Summary

Score	Energy rating	Current	Potential
92+	A		
81-91	B		
69-80	C		75 C
55-68	D		
39-54	E	52 E	
21-38	F		
1-20	G		

Additional Information

These particulars are thought to be materially correct though their accuracy is not guaranteed and they do not form part of any contract. All measurements are approximate and we have not tested any fitted appliances, electrical or plumbing installation or central heating systems. Floor plans are for illustration purposes only and their accuracy is not guaranteed.