



East Float Quay, Birkenhead, Wirral CH41 1DN

- Modern and Spacious One Bedroom Ground Floor Duplex Apartment
- Situated in the Popular East Float Development in Birkenhead
- Boasting a Mezzanine Level with a Large Double Bedroom
- Close to Local Amenities and Commuting Links
- Benefiting from Being Offered for Sale with No Onward Chain
- Hallway, Open Plan Lounge/Kitchen, Store Room and Bathroom
- Allocated Parking Space, Double Glazing and Heating System
- Viewing Strongly Recommended to Appreciate this Home in Full



£110,000 – No Onward Chain





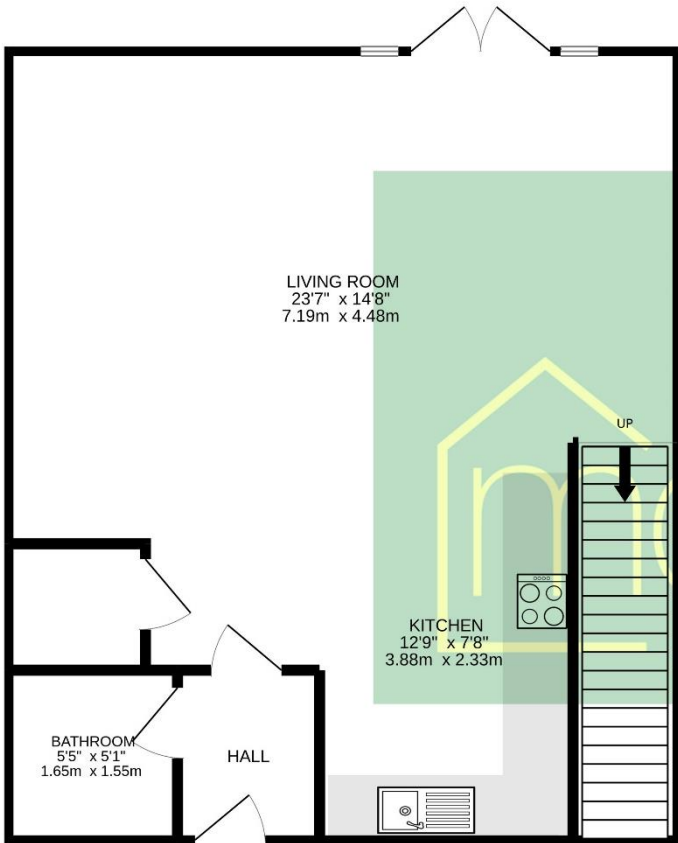


Description

Move Residential are delighted to offer with no onward chain this one double bedroom ground floor duplex apartment. Situated in the popular East Float Quay development this modern and spacious accommodation briefly comprises a hallway with access to a bathroom, store cupboard and a large open plan living kitchen complete with appliances. Stairs up to a mezzanine level with a large double bedroom. Further benefiting from double glazing, heating system and allocated parking space. Closer inspection essential.

Floor Plan

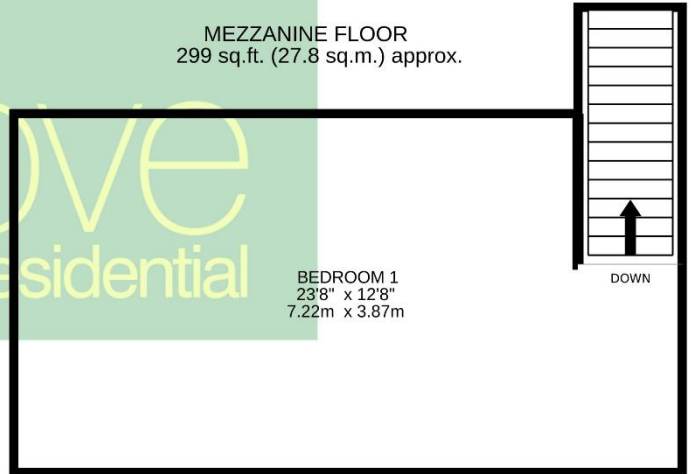
GROUND FLOOR
647 sq.ft. (60.1 sq.m.) approx.



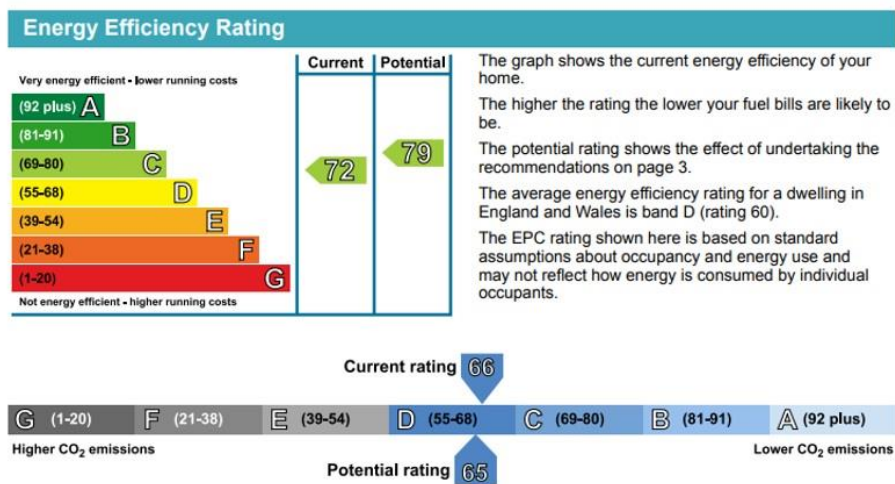
TOTAL FLOOR AREA : 946 sq.ft. (87.9 sq.m.) approx.

Whilst every attempt has been made to ensure the accuracy of the floorplan contained here, measurements of doors, windows, rooms and any other items are approximate and no responsibility is taken for any error, omission or mis-statement. This plan is for illustrative purposes only and should be used as such by any prospective purchaser. The services, systems and appliances shown have not been tested and no guarantee as to their operability or efficiency can be given.
Made with Metropix ©2022

MEZZANINE FLOOR
299 sq.ft. (27.8 sq.m.) approx.



EPC Summary



Additional Information

These particulars are thought to be materially correct though their accuracy is not guaranteed and they do not form part of any contract. All measurements are approximate and we have not tested any fitted appliances, electrical or plumbing installation or central heating systems. Floor plans are for illustration purposes only and their accuracy is not guaranteed.