



## Silverdale, Mount Avenue, Heswall, Wirral CH60 4TH

- Well Proportioned Two Bedroom First Floor Apartment
- Secure Entry System, Lift Access and Under Floor Heating
- Hallway, Storage, Two Bedrooms, En Suite and Bathroom
- Allocated Parking Space and Bike Store - No Onward Chain
- Situated Within Walking Distance to Heswall Town Centre
- Boasting Approximately 738 Square Foot of Living Space
- Bespoke Open Plan Living Kitchen Diner with Balcony Off
- As Appointed Agents we Strongly Recommend an Early Viewing



£295,000













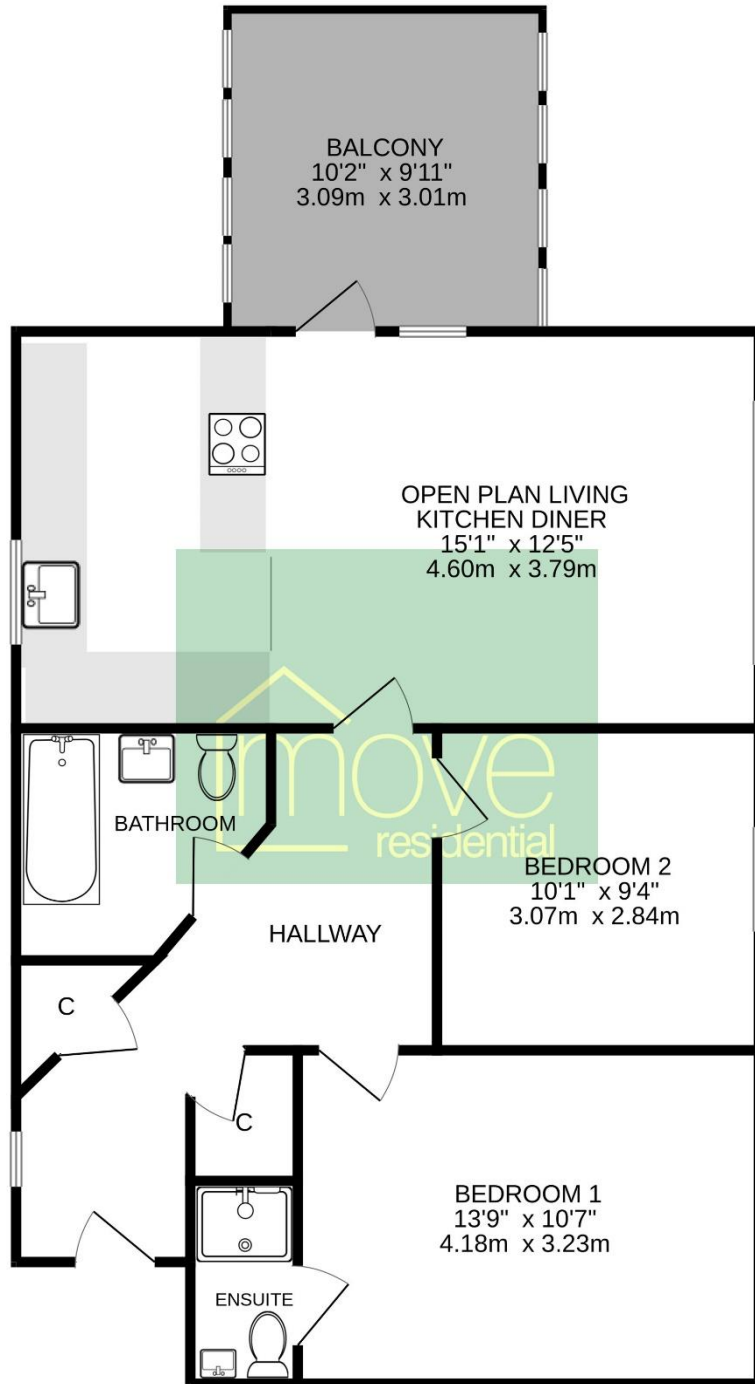
## Description

Situated within walking distance to Heswall town centre, Move Residential are delighted to showcase this well proportioned two bedroom first floor apartment. The development has been constructed to a high standard, with secure entry system, lift access, underfloor heating along with luxurious kitchen and bathroom suites. Comprising of 10 apartments with only a few left available to purchase, apartment 3 is located on the first floor and spans approximately 738 square foot. In brief you have a hallway with storage, stunning open plan living kitchen diner with balcony off, bespoke fitted kitchen with a comprehensive range of wall and base units, Quartz worktops and fitted appliances. Two double bedrooms, en suite shower room and three piece bathroom. Further benefiting from an allocated parking space and bike storage. A closer inspection is strongly recommended.

## Additional Information

These particulars are thought to be materially correct though their accuracy is not guaranteed and they do not form part of any contract. All measurements are approximate and we have not tested any fitted appliances, electrical or plumbing installation or central heating systems. Floor plans are for illustration purposes only and their accuracy is not guaranteed.

FIRST FLOOR



TOTAL FLOOR AREA : 732sq.ft. (68.0 sq.m.) approx.

Whilst every attempt has been made to ensure the accuracy of the floorplan contained here, measurements of doors, windows, rooms and any other items are approximate and no responsibility is taken for any error, omission or mis-statement. This plan is for illustrative purposes only and should be used as such by any prospective purchaser. The services, systems and appliances shown have not been tested and no guarantee as to their operability or efficiency can be given.  
Made with Metropix ©2024