



Silverdale, Mount Avenue, Heswall, Wirral CH60 4TH

- Modern and spacious Two Bedroom First Floor Apartment
- Secure Entry System, Lift Access and Under Floor Heating
- Hallway, Storage, Two Bedrooms, En Suite and Bathroom
- Allocated Parking Space - Offered for Sale with No Chain
- Enjoying Lovely Estuary Views Towards the Welsh Hills
- Boasting Approximately 834 Square Foot of Living Space
- Bespoke Open Plan Living Kitchen Diner with Balcony Off
- Situated Within Walking Distance to Heswall Town Centre



£325,000











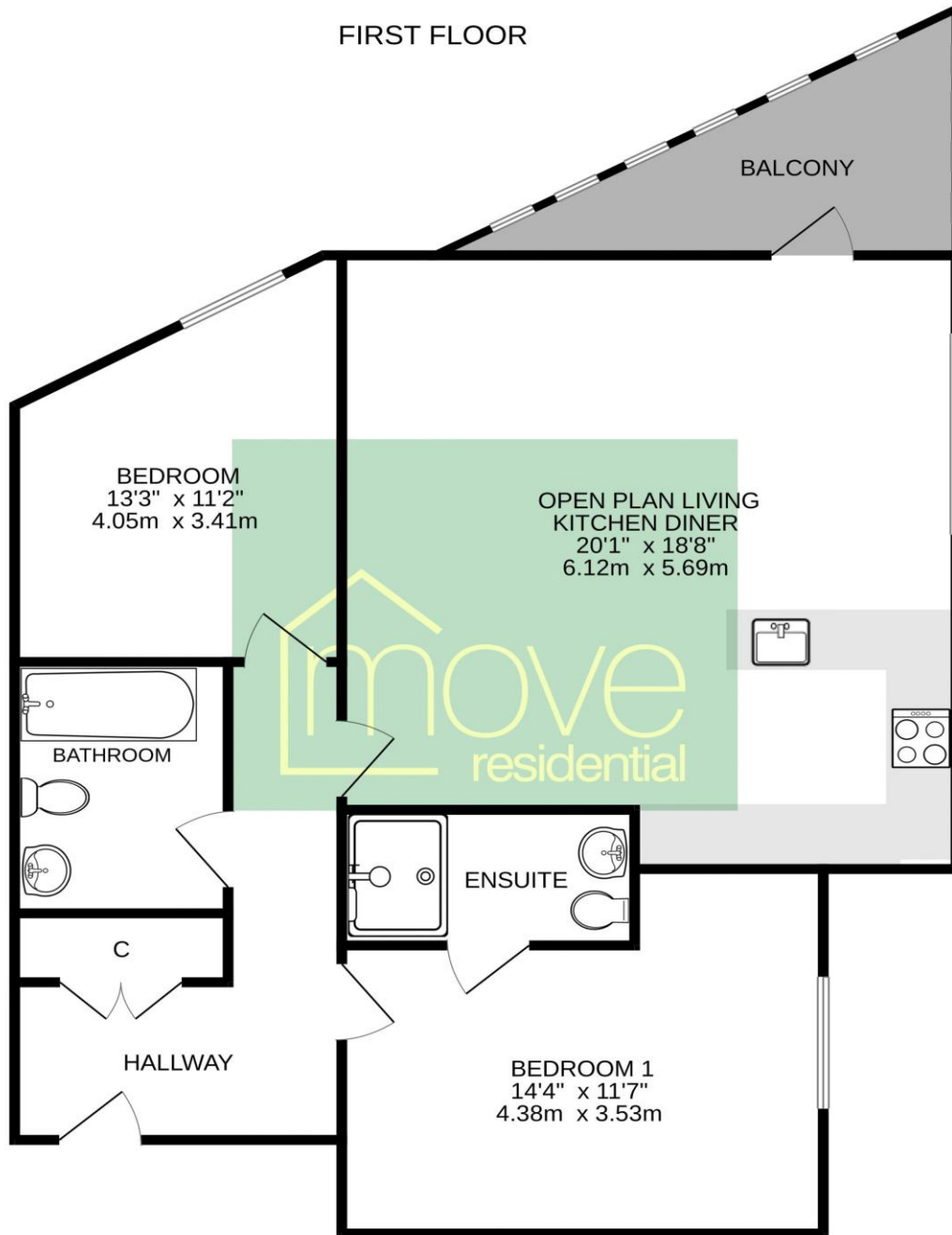




Description

Situated a stones throw from Heswall town centre, Move Residential are delighted to showcase this spacious two bedroom first floor apartment enjoying lovely Estuary views. The development has been constructed to a high standard, with secure entry system, lift access and luxury kitchen and bathroom suites. Comprising of 10 apartments with only a few left available to purchase, apartment 2 is located on the first floor and spans approximately 834 square foot of sumptuous living accommodation. In brief the property comprises a hallway with storage, stunning open plan living kitchen diner with picture window and balcony positioned to enjoy the views. Bespoke fitted kitchen with a comprehensive range of wall and base units, Quartz worktops and fitted appliances. Two double bedrooms, en suite shower room and three piece bathroom. Further benefiting from an allocated parking space and bike store. A closer inspection is strongly recommended.

FIRST FLOOR



TOTAL FLOOR AREA : 834sq.ft. (77.5 sq.m.) approx.

Additional Information

Whilst every attempt has been made to ensure the accuracy of the floorplan contained here, measurements of doors, windows, rooms and any other items are approximate and no responsibility is taken for any error, omission or mis-statement. This plan is for illustrative purposes only and should be used as such by any prospective purchaser. The services, systems and appliances shown have not been tested and no guarantee is made as to their accuracy or efficiency. They do not form part of any contract. All measurements are approximate and we have not tested any fitted appliances, electrical or plumbing installation or central heating systems. Floor plans are for illustration purposes only and their accuracy is not guaranteed.