



Malley Close, Upton , Wirral CH49 0WJ

- Modern Three Bedroom End Terraced Property
- Well Appointed Throughout with a Neutral Decor
- Three Bedrooms, En Suite and Family Bathroom
- Good Sized Enclosed Rear Garden with Patio and Lawn
- Quiet Cul-de-sac in the Popular Area of Upton
- Hall, W.C, Spacious Lounge and Kitchen Diner/Snug
- Driveway, Double Glazing and Gas Central Heating
- Close to Amenities, Transport Links and Schools



£230,000









Description

Modern and well appointed, Move Residential are delighted to present this attractive three bedroom end terraced property. located in a quiet cul-de-sac in the popular area of Upton, within easy reach of amenities, transport links and excellent schools for all age groups. In brief you have a hallway, W.C, spacious front lounge and a modern well fitted rear kitchen diner with lovely snug area. To the first floor you have three good sized bedrooms, en suite to master and a family bathroom. Further benefiting from off road parking, double glazing and gas central heating. Completing this home perfectly is the generous rear garden, beautifully manicured with patio and lawned areas perfect for entertaining or relaxing. A closer inspection is strongly recommended.

EPC Summary

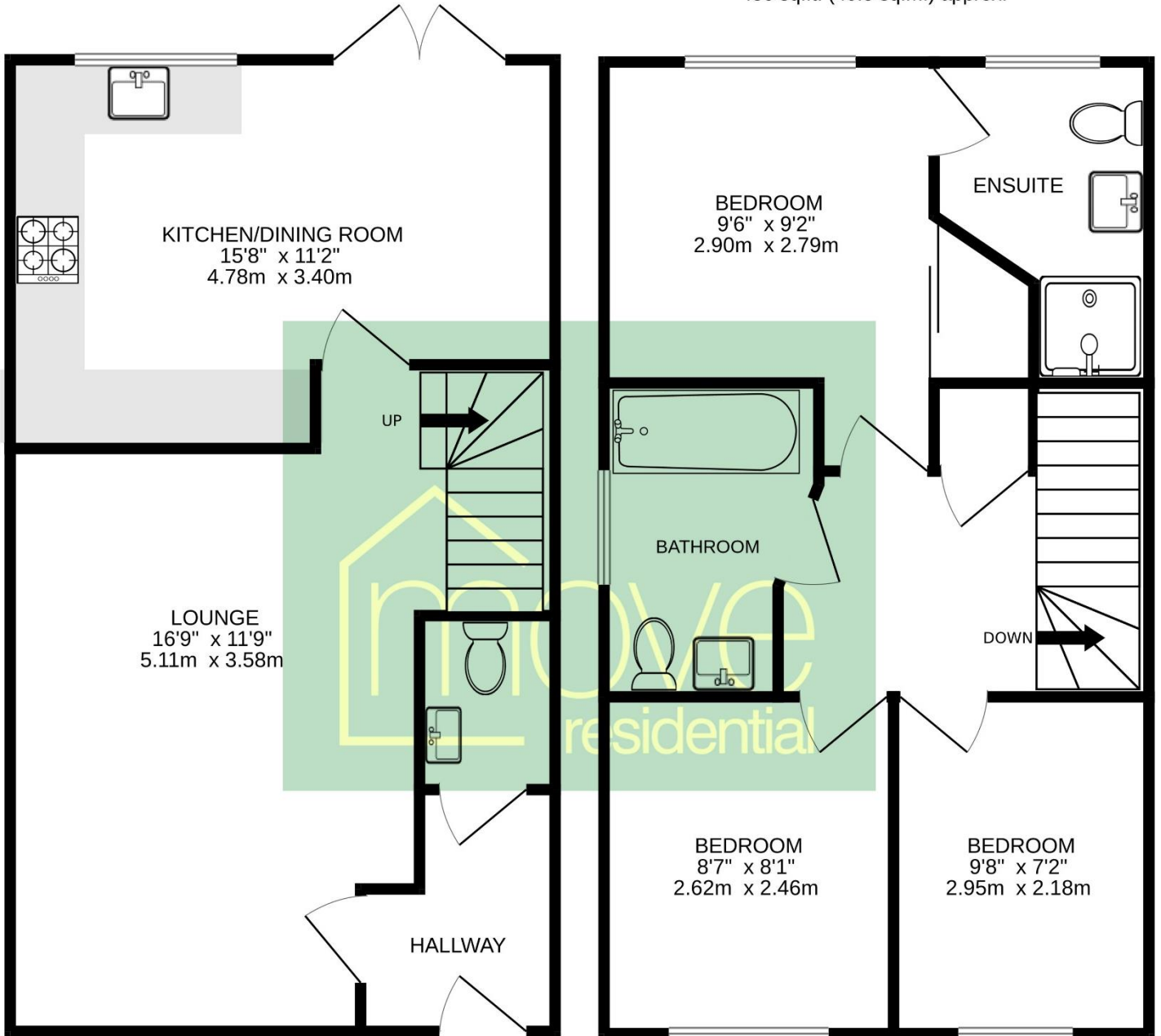
Score	Energy rating	Current	Potential
92+	A		96 A
81-91	B	83 B	
69-80	C		
55-68	D		
39-54	E		
21-38	F		
1-20	G		

Additional Information

These particulars are thought to be materially correct though their accuracy is not guaranteed and they do not form part of any contract. All measurements are approximate and we have not tested any fitted appliances, electrical or plumbing installation or central heating systems. Floor plans are for illustration purposes only and their accuracy is not guaranteed.

GROUND FLOOR
436 sq.ft. (40.5 sq.m.) approx.

1ST FLOOR
436 sq.ft. (40.5 sq.m.) approx.



TOTAL FLOOR AREA : 871 sq.ft. (80.9 sq.m.) approx.

Whilst every attempt has been made to ensure the accuracy of the floorplan contained here, measurements of doors, windows, rooms and any other items are approximate and no responsibility is taken for any error, omission or mis-statement. This plan is for illustrative purposes only and should be used as such by any prospective purchaser. The services, systems and appliances shown have not been tested and no guarantee as to their operability or efficiency can be given.

Made with Metropix ©2024