



Raby Close, Lower Heswall, Wirral CH60 0EA

- Impressive Three Bedroom Detached Bungalow
- Spacious and Immaculately Presented Living Accommodation
- Hallway, Sizeable Lounge, Stunning Kitchen Diner and Orangery
- Low Maintenance Gardens Enjoying the Stunning Estuary Views
- Enjoying Lovely Views Towards the Estuary and Welsh Hills
- Prime Location Situated in the Centre of Heswall Lower Village
- Three Good Sized Bedrooms, En Suite Shower Room and Bathroom
- Off Road Parking - Closer Inspection Strongly Recommended



Offers in the Region Of £650,000





















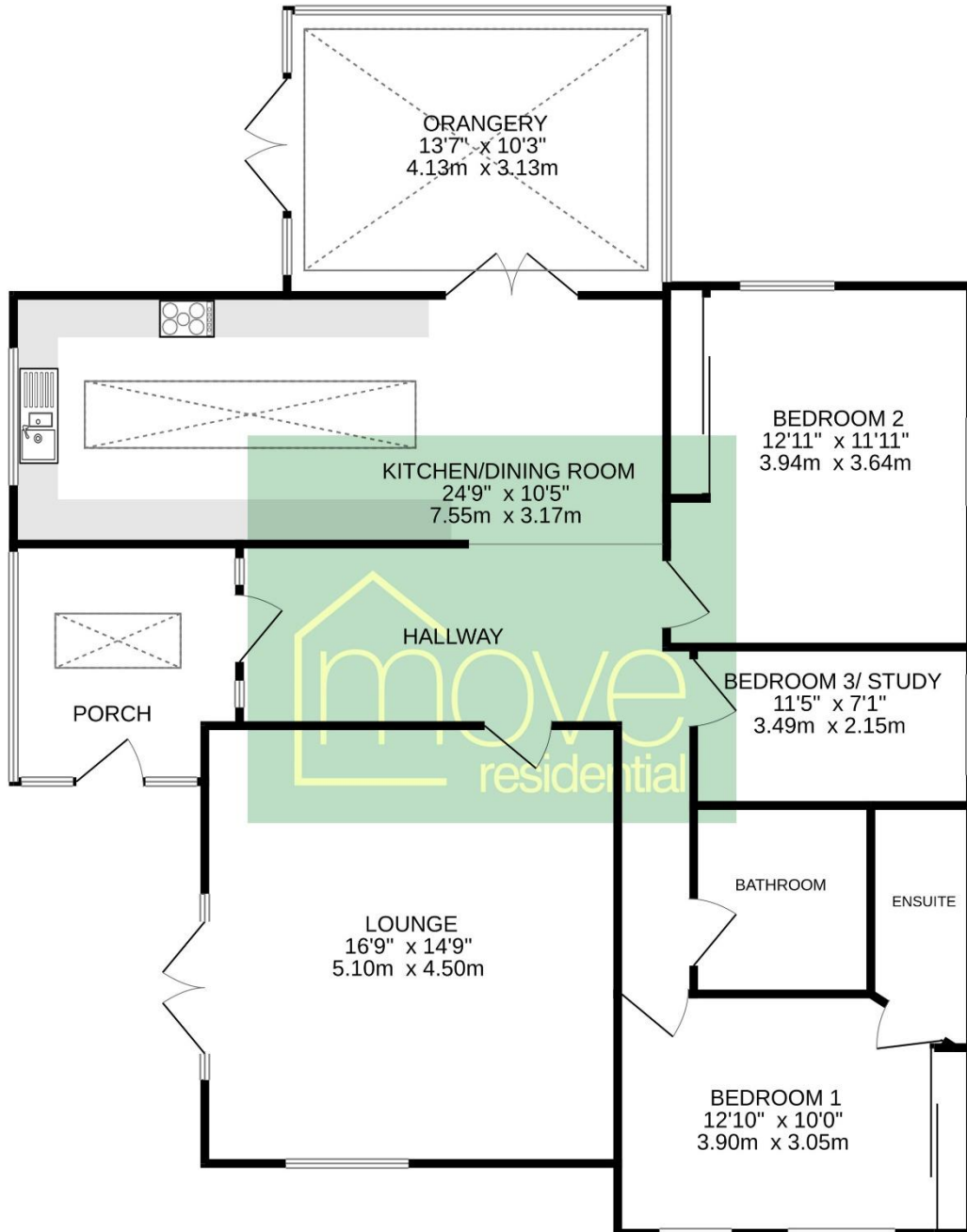
Description

Immaculately presented and deceptively spacious, Move Residential are delighted to showcase this impressive three bedroom detached bungalow. Set in the a prime location in the centre of Lower Heswall Village, enjoying lovely views over the Dee Estuary towards the Welsh Hills a closer inspection is essential to appreciate this home in full.

In brief you have a porch, welcoming hallway and sizeable front lounge with feature fireplace, fitted book shelves, media wall and patio doors opening to the delightful front garden. Stunning bespoke fitted kitchen diner, with atrium skylight flooded the room with natural light, a comprehensive range of wall and base units with contrasting work tops and integrated appliances. From the kitchen you have access to a orangery with lantern ceiling and superb views over the gardens and Estuary. An inner hallway leads to the master bedroom with fitted wardrobes and en suite shower room. Second double bedroom with fitted wardrobe, bedroom three/study and a three piece bathroom suite.

Externally the property boasts off road parking and low maintenance wrap around gardens perfect for al fresco dining, relaxing or entertaining. An enviable location nestled in the prestigious area of Lower Heswall. With excellent local amenities, thriving community spirit and easy access throughout Wirral, Chester and Liverpool. Heswall is a town with its own unique charm, bustling with local boutique shops, cafes and beauty salons. Boasting a wealth of schools for all ages, there are superb recreational facilities close by including Heswall Football Club, Tennis and Squash Club.

GROUND FLOOR
1287 sq.ft. (119.6 sq.m.) approx.



TOTAL FLOOR AREA : 1287 sq.ft. (119.6 sq.m.) approx.

Whilst every attempt has been made to ensure the accuracy of the floorplan contained here, measurements of doors, windows, rooms and any other items are approximate and no responsibility is taken for any error, omission or mis-statement. This plan is for illustrative purposes only and should be used as such by any prospective purchaser. The services, systems and appliances shown have not been tested and no guarantee as to their operability or efficiency can be given.
Made with Metropix ©2024

EPC Summary

Score	Energy rating	Current	Potential
92+	A		
81-91	B		
69-80	C		79 C
55-68	D	65 D	
39-54	E		
21-38	F		
1-20	G		

Additional Information

These particulars are thought to be materially correct though their accuracy is not guaranteed and they do not form part of any contract. All measurements are approximate and we have not tested any fitted appliances, electrical or plumbing installation or central heating systems. Floor plans are for illustration purposes only and their accuracy is not guaranteed.