

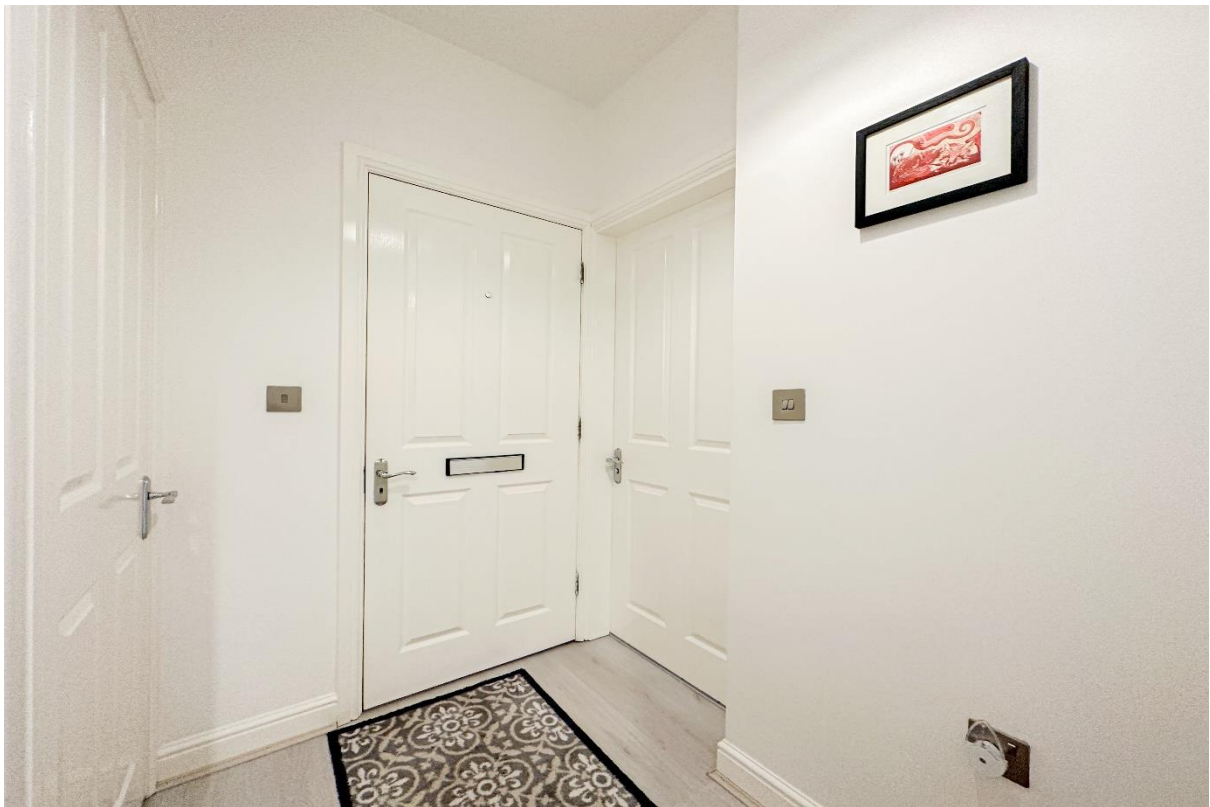


Rosebrae Court, Heswall, Wirral CH60 7RP

- Charming Two Bedroom First Floor Apartment
- Well Appointed and Presented Accommodation
- Two Bright & Generously Sized Double Bedrooms
- Communal Gardens & Allocated Off-Road Parking
- Within Walking Distance to Heswall Town Centre
- Entrance Hall, Spacious Lounge & Fitted Kitchen
- Ensuite to Principal Bedroom & Main Bathroom
- No Onward Chain - Early Viewing Recommended



Offers Over £180,000







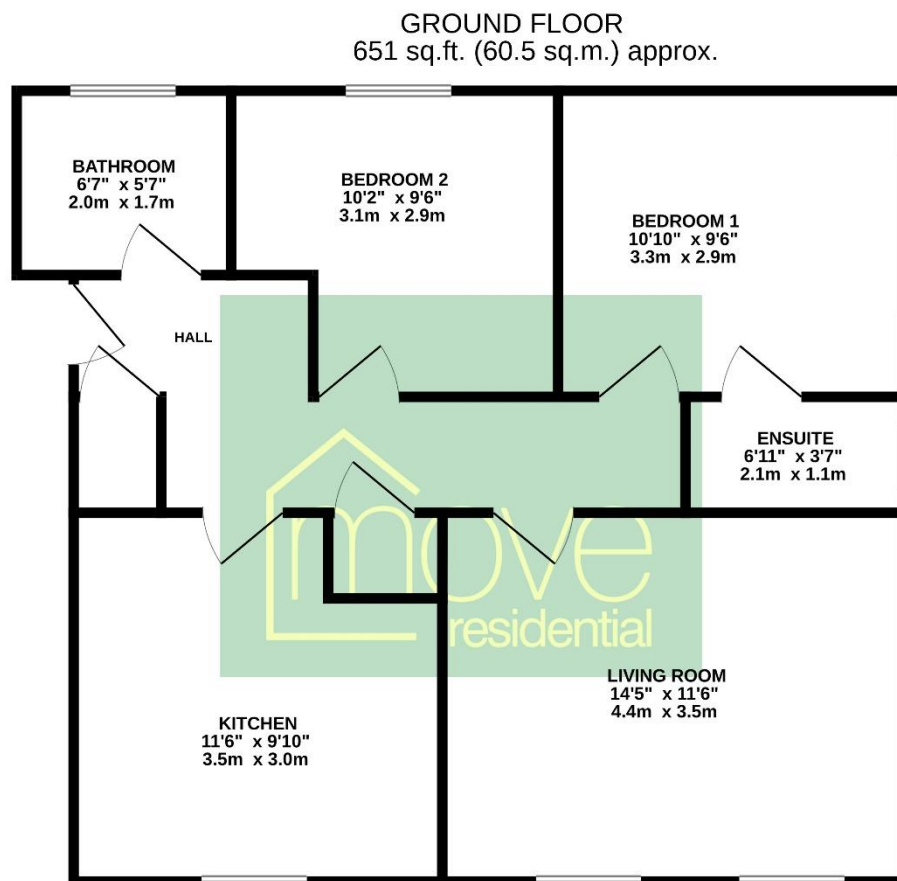




Description

Move Residential are delighted to offer for sale with no onward chain this two bedroom first floor apartment. Located within walking distance to Heswall town centre the apartment benefits from being within easy access to transport links and amenities. Internally the accommodation comprises an entrance hallway, spacious and bright lounge, breakfast kitchen, two double bedrooms, an en suite to the principle bedroom and a well fitted bathroom. Externally offering communal gardens and allocated parking. As appointed agents we strongly recommend an early viewing to avoid missing out.

Floor Plan



TOTAL FLOOR AREA : 651 sq.ft. (60.5 sq.m.) approx.

Whilst every attempt has been made to ensure the accuracy of the floorplan contained here, measurements of doors, windows, rooms and any other items are approximate and no responsibility is taken for any error, omission or mis-statement. This plan is for illustrative purposes only and should be used as such by any prospective purchaser. The services, systems and appliances shown have not been tested and no guarantee as to their operability or efficiency can be given.
Made with Metropix ©2024

EPC Summary

Score	Energy rating	Current	Potential
92+	A		
81-91	B		
69-80	C	76 C	77 C
55-68	D		
39-54	E		
21-38	F		
1-20	G		

Additional Information

These particulars are thought to be materially correct though their accuracy is not guaranteed and they do not form part of any contract. All measurements are approximate and we have not tested any fitted appliances, electrical or plumbing installation or central heating systems. Floor plans are for illustration purposes only and their accuracy is not guaranteed.