



## Oak Close, Moreton, Wirral, CH46 0UH

- Spacious One Bedroom Ground Floor Apartment
- Well Appointed and Maintained Living Accommodation
- Double Bedroom with Fitted Wardrobes and Shower Room
- Situated Within Easy Reach of Amenities and Transport Links
- Located in the Popular Residential Area of Moreton
- Hallway, Storage Room, Large Lounge and Fitted Kitchen
- Ample Communal Parking and Lovely Lawned Gardens
- No Chain - Closer Inspection Strongly Recommended



Offers Over £80,000















## Description

Move Residential are delighted to showcase for sale, with no onward chain, this impressive one bedroom ground floor apartment, located in the highly sought after area of Moreton. This property is well appointed and spacious, boasting a neutral décor throughout. Following through an inviting entrance hall complete with storage cupboard, you are led into a generously sized bay-fronted lounge which is awash with natural light, followed by a well fitted kitchen featuring modern units and plentiful surface space. The sleeping accommodation consists of a sizable double bedroom which enjoys a range of fitted furniture, and completing the interior of this apartment is a contemporary style shower room. The property further benefits from ample communal parking as well as lovely lawned gardens. Located in the popular residential area of Moreton within easy reach of amenities and transport links, a closer inspection is strongly recommended.

## EPC Summary

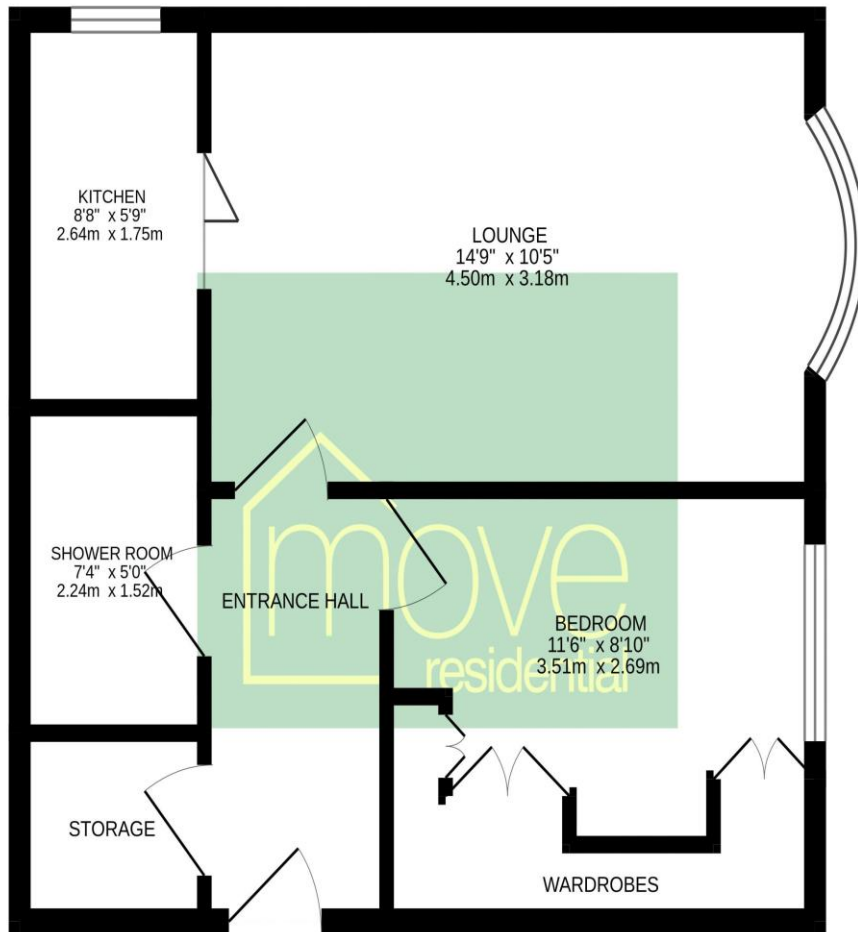
Score	Energy rating	Current	Potential
92+	A		
81-91	B		
69-80	C	76 C	77 C
55-68	D		
39-54	E		
21-38	F		
1-20	G		

## Additional Information

These particulars are thought to be materially correct though their accuracy is not guaranteed and they do not form part of any contract. All measurements are approximate and we have not tested any fitted appliances, electrical or plumbing installation or central heating systems. Floor plans are for illustration purposes only and their accuracy is not guaranteed.

## Floor Plan

GROUND FLOOR  
440 sq.ft. (40.9 sq.m.) approx.



TOTAL FLOOR AREA : 440 sq.ft. (40.9 sq.m.) approx.

Whilst every attempt has been made to ensure the accuracy of the floorplan contained here, measurements of doors, windows, rooms and any other items are approximate and no responsibility is taken for any error, omission or mis-statement. This plan is for illustrative purposes only and should be used as such by any prospective purchaser. The services, systems and appliances shown have not been tested and no guarantee as to their operability or efficiency can be given.  
Made with Metropix ©2024

