



Halcyon Road, Birkenhead, Wirral CH41 2UG

- Bay Fronted Three Bedroom Mid Terraced Property
- Well Presented and Appointed Living Accommodation
- Three Sizeable Bedrooms and a Three Piece Bathroom
- Set Within Easy Reach of Amenities and Transport Links
- Offered to the Sales Market with No Onward Chain
- Hallway, Lounge, Rear Reception and Fitted Kitchen
- Private Enclosed Courtyard with Rear Access Gate
- Closer Inspection Strongly Recommended



£135,000- No Onward Chain











Description

Offered for sale with no onward chain, Move Residential are delighted to present this bay fronted three bedroom mid terraced property. Well maintained and appointed throughout, this spacious living accommodation briefly comprises a hallway, bay fronted lounge with feature fireplace, rear reception room and a well fitted modern kitchen. To the first floor you have a large master bedroom with fitted wardrobes, second double bedroom, good sized third bedroom and a three piece bathroom. Externally you have an an enclosed yard with rear access gate. Situated within easy reach of amenities and transport links a closer inspection is strongly recommended.

EPC Summary

Score	Energy rating	Current	Potential
92+	A		
81-91	B		86 B
69-80	C		
55-68	D		
39-54	E		
21-38	F	22 F	
1-20	G		

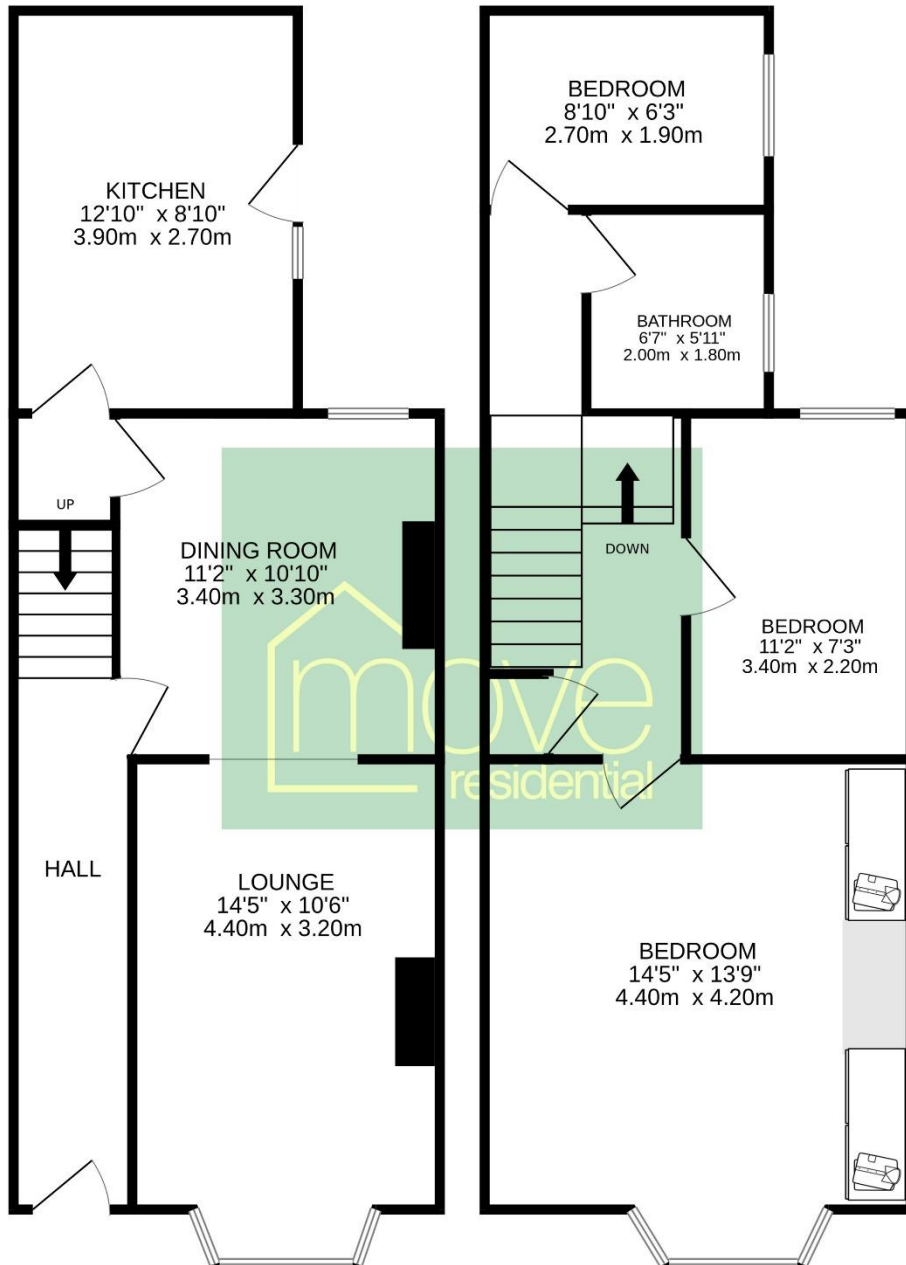
Additional Information

These particulars are thought to be materially correct though their accuracy is not guaranteed and they do not form part of any contract. All measurements are approximate and we have not tested any fitted appliances, electrical or plumbing installation or central heating systems. Floor plans are for illustration purposes only and their accuracy is not guaranteed.

Floor Plan

GROUND FLOOR
474 sq.ft. (44.0 sq.m.) approx.

1ST FLOOR
483 sq.ft. (44.9 sq.m.) approx.



TOTAL FLOOR AREA : 957 sq.ft. (88.9 sq.m.) approx.

Whilst every attempt has been made to ensure the accuracy of the floorplan contained here, measurements of doors, windows, rooms and any other items are approximate and no responsibility is taken for any error, omission or mis-statement. This plan is for illustrative purposes only and should be used as such by any prospective purchaser. The services, systems and appliances shown have not been tested and no guarantee as to their operability or efficiency can be given.
Made with MetroPix ©2024