



## The Barn, Jane Grove, Storeton, Wirral CH63 6AA

- Idyllic and Luxurious Four Bedroom Semi Detached Barn Conversion
- Located in the Stunning Picturesque Semi Rural Area of Storeton
- Bespoke High Quality Fitted Kitchen Diner with a Range of Appliances
- Three Sizeable First Floor Bedrooms, Luxury En Suite and Bathroom
- Period Property Meticulously Updated for Contemporary Living
- Hallway, Storage, W.C and Impressive Lounge Diner with Bi-Fold Doors
- Ground Floor Double Bedroom with Modern En Suite Shower Room
- Driveway and Extensive Rear Garden with Delightful Open Aspect



Offers Over £499,950









































## Description

Nestled in the picturesque and semi rural area of Storeton, sits this idyllic and luxurious four bedroom semi detached barn conversion. This breathtaking period property has been meticulously updated with contemporary living in mind which must be viewed to be appreciated in full. Appointed with a neutral and fresh décor the property is drenched in natural light from the feature windows and bi-folding doors.

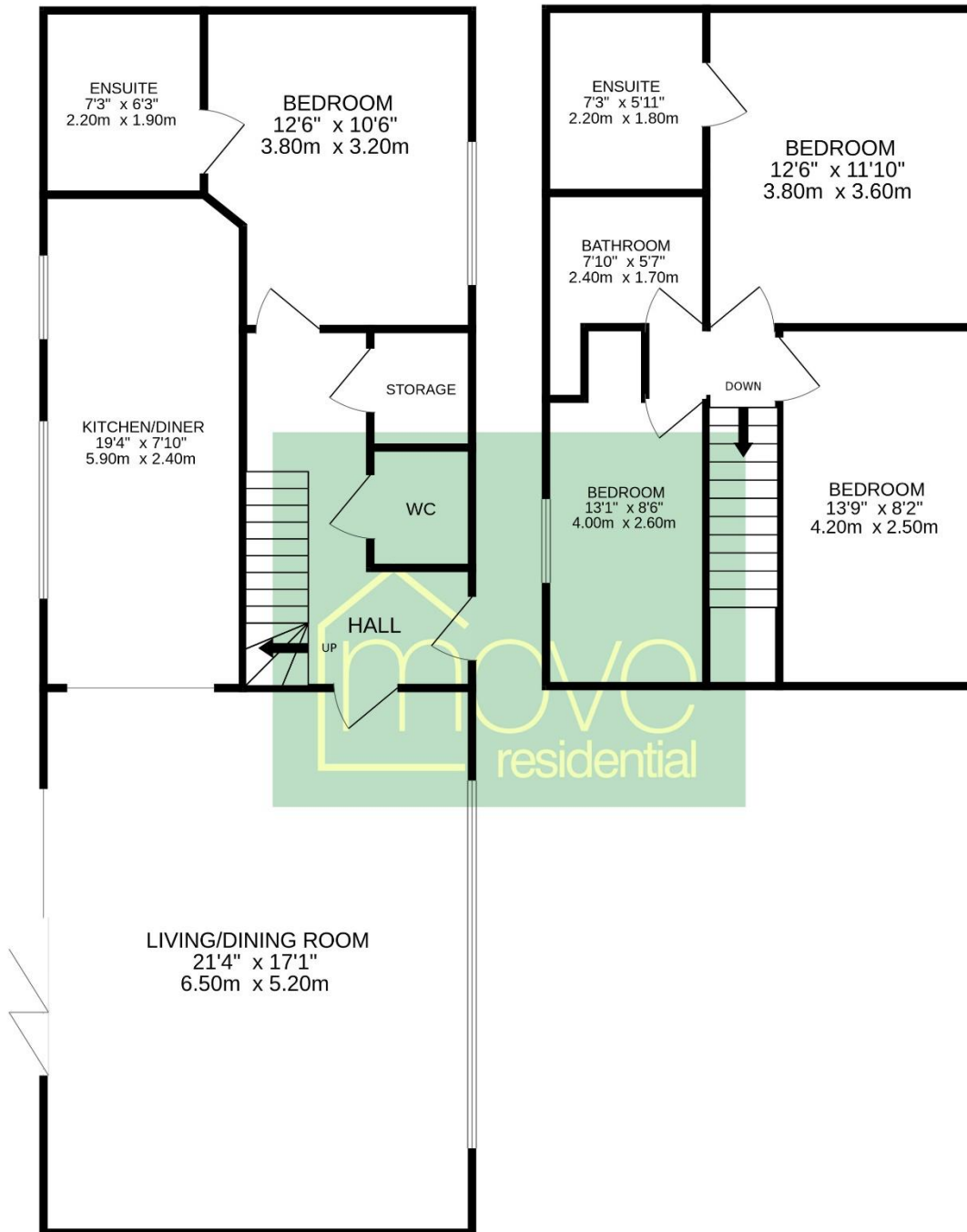
In brief you have a welcoming hallway with storage and W.C. Impressive lounge/diner spanning the full depth of the property with pitched ceiling, feature windows and bi-folding doors to the delightful rear garden. Bespoke kitchen diner fitted with a comprehensive range of high quality unit with complimentary work tops and a range of appliances, the dining area could also be utilised as a seating area. The ground floor is completed by a double bedroom and modern en suite shower room. To the first floor you have three sizeable bedrooms, en suite and family bathroom some rooms on this floor have the added benefit of exposed beams adding character to this superb home.

Externally you have off road parking and lawned front garden with hedged boundary providing privacy. To the rear you have an extensive garden, beautifully manicured with sweeping lawn, patio area and delightful open aspect.

# Floor Plan

GROUND FLOOR

1ST FLOOR



TOTAL FLOOR AREA : 1475sq.ft. (137.0 sq.m.) approx.

Whilst every attempt has been made to ensure the accuracy of the floorplan contained here, measurements of doors, windows, rooms and any other items are approximate and no responsibility is taken for any error, omission or mis-statement. This plan is for illustrative purposes only and should be used as such by any prospective purchaser. The services, systems and appliances shown have not been tested and no guarantee as to their operability or efficiency can be given.  
Made with Metropix ©2024



## Site Map



## EPC Summary

Score	Energy rating	Current	Potential
92+	A		
81-91	B		89 B
69-80	C	80 C	
55-68	D		
39-54	E		
21-38	F		
1-20	G		

### Additional Information

These particulars are thought to be materially correct though their accuracy is not guaranteed and they do not form part of any contract. All measurements are approximate and we have not tested any fitted appliances, electrical or plumbing installation or central heating systems. Floor plans are for illustration purposes only and their accuracy is not guaranteed.